



INSTRUCTIONS FOR INSTALLATION LED WALKOVER

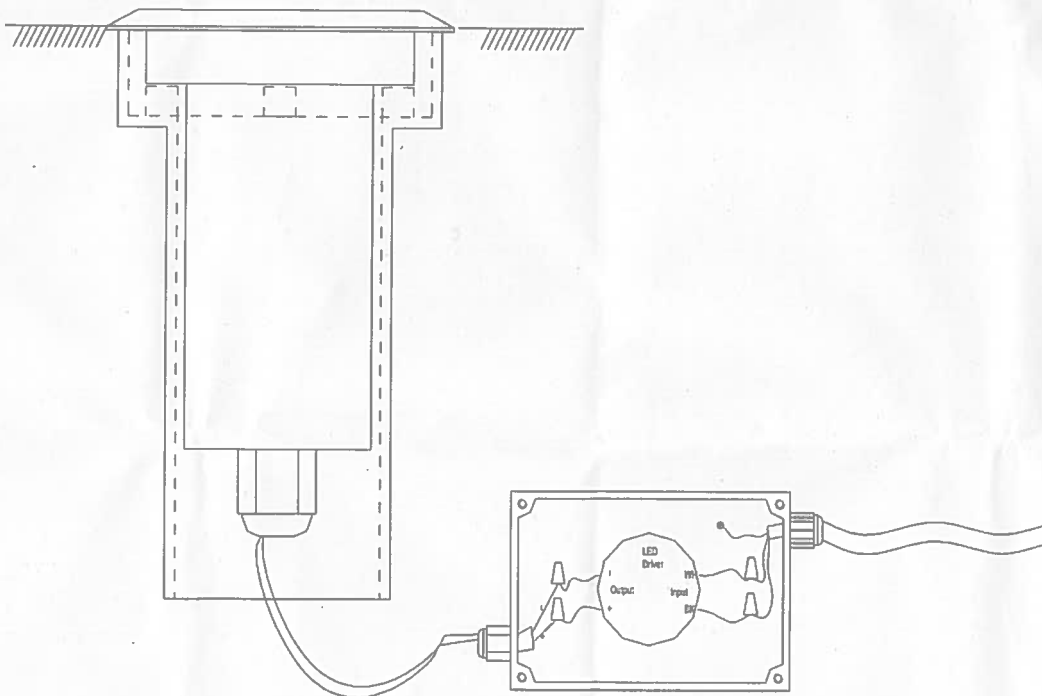
These lighting fixtures are suitable for installation in the ground to driveways, paths, patios, decking and garden walls. (Not for soak)

SAFETY INSTRUCTIONS:

1. Before commencing installation or maintenance, the electricity supply must be isolated.
2. Used with suitable driver and external IP rated connection box.
3. Must have drainage system in the bottom part of fixture
4. Please do not look directly into the light when it is switched on.

INSTALLATION INSTRUCTIONS

1. Loosen the front cover, connect the lamp with external IP rated connection box.
2. Connect the fixture to driver, "+" positive electrode wire connect with "+" positive electrode of fixture, "-" negative electrode wire connect with "-" negative electrode of fixture.
3. Connect the white wire from driver to the white power cord and the black wire from driver to the black power cord by using "screw on connector", earth wire connect to the terminal block.
4. Close the terminal block and connect the power supply



Driver Connection Instruction for LED Walkover

