



# THALASSA ET6020

OUTDOOR PRODUCTS  
SCONCE



The Thalassa outdoor surface mounted cylindrical LED fixture was created with a sleek design deliberately, so it could blend in with many different outdoor building styles. The Thalassa also has an impressive efficacy of 70 LPW providing performance as well as elegance in the install environment. Finally, this product is a complete aluminum die cast offering an unparalleled sense of finesse, fixture strength and quality.

Project: \_\_\_\_\_  
Qty: \_\_\_\_\_  
Notes: \_\_\_\_\_

## OPERATING & ELECTRICAL

**Input Voltage** 100-277Vac  
**Power factor** 0.9  
**Dimming** 0-10V external dimming down to 10% (with DMG option)  
**Total harmonic distortion (THD)** <20%

## PERFORMANCE

**Lumens per Watt** ~70 LPW at 80CRI  
**Power consumption** 24W  
**Beam angle** 15, 25, 38, 45, 60°

## MECHANICAL & HOUSING

**Housing** Aluminum die cast  
**Lens** Highly durable, shatterproof tempered glass lens ensures high efficiency light output for a clean, evenly illuminated surface with minimal glare.

**Finish** Aeralux white, black, gray (RAL9006) powder coat finish  
**Power Supply** Factory wired electronic LED driver  
**LED Board** COB

## APPLICATION CONDITION

**Ambient temperature range** -25 to 50°C  
**Protection** IP65

## COMPATIBLE MOUNTING

**Mounting** Surface mount

## WARRANTY

**System warranty** 5 years  
**Lumen maintenance** Rated for 85% initial lumen output at 50,000 hours of operation, operated at 25°C ambient temperature; per guidelines published by the Illuminating Engineering Society (IES). (L85 at 50,000 hours)

## ORDERING GUIDE

EXAMPLE: ET6020-C24-3-25-80-W-DMG

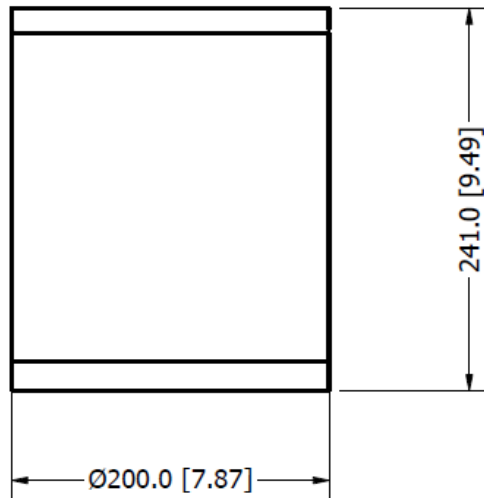
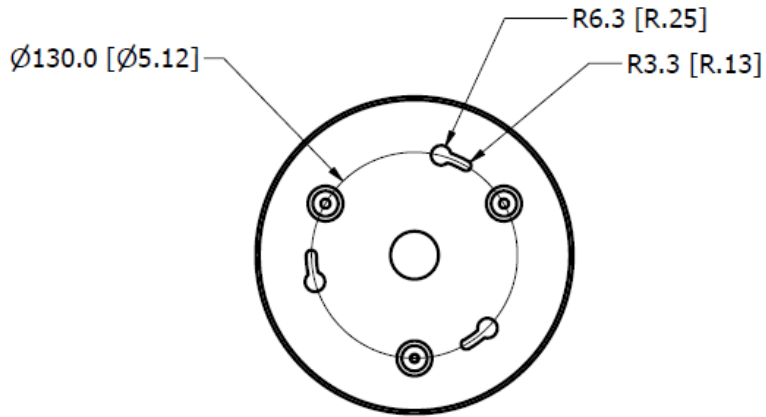
| ET6020  | -C24                                | -3              | -20                   | -80           | -W  | -DMG   |
|---|-------------------------------------|-----------------|-----------------------|---------------|---|--|
| FIXTURE FAMILY  | POWER                               | CCT             | BEAM ANGLE            | CRI           | FINISH  | CONTROLS   |
| ET6020<br>AERALUX Thalassa<br>ET6022 outdoor surface<br>mounted sconce<br>fixture | -C24<br>24 watts:<br>1680<br>lumens | -3<br>3000K CCT | -15<br>15° beam angle | -80<br>80 CRI | -B<br>Black powder<br>coat finish               | -DMG<br>0-10V external<br>dimming down<br>to 10% |
|   |                                     |                 | -25<br>25° beam angle |               |   |  |
|   |                                     | -4<br>4000K CCT | -38<br>38° beam angle |               |   |  |
|   | -C40<br>40 watts:<br>2800<br>lumens | -5<br>5000K CCT | -45<br>45° beam angle |               | -S<br>Silver (RAL9006)<br>powder coat<br>finish |  |
|   |                                     |                 | -60<br>60° beam angle |               |   |  |



Aeralux Incorporation All Rights Reserved. Any information provided is subject to change without notice. All values are typical values when measured under normal laboratory conditions.

## DIMENSIONS

EXAMPLE: AE-OD-ET6020



### LUMEN ESTIMATE

Lumen output varies based on CCT and CRI. An estimate of lumen output of the various CCT/CRI combinations, use correction factors as per table below:

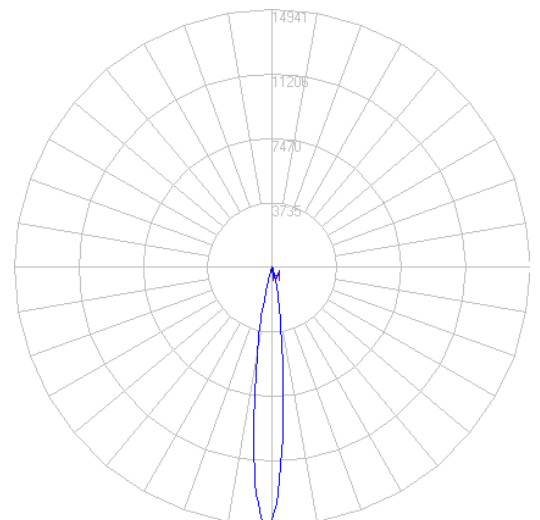
| Lumen estimate adjustment factors |       |       |       |       |
|-----------------------------------|-------|-------|-------|-------|
| CCT                               | 2700K | 3000K | 3500K | 4000K |
| NORMAL (80CRI)                    | 0.94  | 1     | 1.02  | 1.03  |

### PHOTOMETRIC DATA

ET6020-C24-3-15-80-X-XXX

| Coefficients of utilization |   |     |     |     |     |     |     |     |     |     |    |    |
|-----------------------------|---|-----|-----|-----|-----|-----|-----|-----|-----|-----|----|----|
| Ceiling                     | 80%   |     |     |     | 70% |     | 50% |     | 30% |     | 0% |    |
| Wall                        | 70%   | 50% | 30% | 10% | 50% | 10% | 50% | 10% | 50% | 10% | 0  |    |
| RCR                         | Zonal Cavity Method – Effective floor reflectance = 20% |     |     |     |     |     |     |     |     |     |    |    |
| Room Cavity Ratio           | 0   | 80  | 80  | 80  | 80  | 78  | 78  | 74  | 74  | 71  | 71 | 67 |
|                             | 1   | 77  | 76  | 75  | 74  | 74  | 72  | 72  | 70  | 69  | 68 | 65 |
|                             | 2   | 75  | 73  | 71  | 69  | 72  | 69  | 70  | 67  | 68  | 66 | 63 |
|                             | 3   | 73  | 70  | 68  | 66  | 69  | 66  | 68  | 65  | 66  | 64 | 62 |
|                             | 4   | 71  | 68  | 66  | 64  | 67  | 64  | 66  | 63  | 65  | 62 | 61 |
|                             | 5   | 70  | 66  | 64  | 62  | 66  | 62  | 65  | 61  | 64  | 61 | 60 |
|                             | 6   | 68  | 65  | 62  | 61  | 64  | 60  | 63  | 60  | 63  | 60 | 59 |
|                             | 7   | 67  | 63  | 61  | 59  | 63  | 59  | 62  | 59  | 62  | 59 | 58 |
|                             | 8   | 66  | 62  | 60  | 58  | 62  | 58  | 61  | 58  | 61  | 58 | 57 |
|                             | 9   | 65  | 61  | 59  | 57  | 61  | 57  | 60  | 57  | 60  | 57 | 56 |
|                             | 10  | 64  | 60  | 58  | 56  | 60  | 56  | 59  | 56  | 59  | 56 | 55 |

| Zonal lumen |        |         |        |
|-------------|--------|---------|--------|
| Zone        | Lumens | Zone    | Lumens |
| 0-10        | 660.41 | 90-100  | 0      |
| 10-20       | 309.25 | 100-110 | 0      |
| 20-30       | 40.36  | 110-120 | 0      |
| 30-40       | 23.02  | 120-130 | 0      |
| 40-50       | 18.03  | 130-140 | 0      |
| 50-60       | 14.49  | 140-150 | 0      |
| 60-70       | 9.99   | 150-160 | 0      |
| 70-80       | 5.4    | 160-170 | 0      |
| 80-90       | 3.33   | 170-180 | 0      |





# THALASSA ET6020

OUTDOOR PRODUCTS

SCONCE

## PHOTOGRAPHS



### PREMIUM MATERIALS

Constructed from aluminum die-cast enhancing thermal heat dissipation while providing excellent figure strength.



### MULTIPLE FINISH OPTIONS

Select from black, white, or silver powder coat anti-cracking finishes to accent your project space.

### MULTIPLE BEAM ANGLES

Customize your fixture with a unique set of beam angles in the uplight or downlight orientation with the option to having a 20-degree tilt towards the wall.



### CRI

80 CRI provides greater rendering allowing for a more natural light look.

Aeralux Inc.  
1111, Dr Frederik-Philips, Suite 202, Montreal, QC H4M 2X6, Canada  
950 N Dupage Ave., Lombard, IL, 60148, USA  
514-447-7598 | 1-630-534-2589  
[www.aeralux.com](http://www.aeralux.com)

Aeralux Incorporation All Rights Reserved. Any information provided is subject to change without notice. All values are typical values when measured under normal laboratory conditions.

aeralux