

CAS-4

HAZARDOUS FLOODLIGHT

Type: _____

Project: _____

Class I, Division 1, Groups C, D
 Class I, Division 2, Groups A, B, C, D
 Class II, Division 2, Groups F, G
 Class III

Delivered Lumens:
 9,800 – 18,400 lm

Input Wattage:
 80W, 100W, 150W

Efficacy:
 up to 130 lm/W

Colour Temperatures:
 3000K, 4000K, 5000K

Projected Lumen Maintenance:
 $L_{70}@ >60,000$ hrs.

The **CASTEX** comes standard in grey powder coat finish.



Pendant mounting is standard

The **CASTEX** is ideal for pulp and paper, wastewater treatment plants, shipyards, chemical processing facilities, petrochemical and grain elevators.

UL 1598A Marine (Salt Water)
 Tested 1000hrs to standard ASTM-B117-11

Configurations

SERIES	OUTPUT	COLOUR TEMP.	HAZARD	DISTRIBUTION	LENS	INPUT	MOUNTING
CAS-4	LO (80W)	W3 (3000K)	A (C1D1)	N (Narrow 25°)	C (Clear lens)	120-277V	[blank] (Pendant-std.)
	MO (100W)	W4 (4000K)	B (C1D2, C2D2, C3)	M (Medium 60°)	D (Diffuse lens)	347V	
	HO (150W)	W5 (5000K)		W (Wide 120°)			

HAZARDOUS:

Class I, Division 1, Groups C, D – T6
 Class I, Division 2, Groups A, B, C, D – T4A
 Class II, Division 2, Groups F, G – T4A
 Class III – T4A

TEMPERATURE RATINGS:

Based on the surface temperature of the fixture:
 – Class I, Division 2, Class II, Division 2 & Class III are rated T4A (will not exceed 120°C)
 – Class I, Division 1 is rated T6 (will not exceed 85°C)

OPERATING TEMPERATURE:

-40°C to +60°C

HOUSING:

Copper-free aluminum housing with separate driver enclosure for superior thermal management. Standard in a grey electrostatic powder coating. All external fasteners are stainless steel 316.

WEIGHT:

LO: 33.5 lbs / 15.2 kg
 MO: 33.7 lbs / 15.3 kg
 HO: 34.2 lbs / 15.5 kg

ELECTRICAL:

AC Input: 120-277V, 50-60Hz.
 AC Input: 347V, 50-60Hz.
 Drivers are standard with 4kV surge protection

LENS:

The clear impact-resistant tempered glass lens has a 120° beam angle and is available in an optional diffuse finish. Optional 25° and 60° beam angles are also available.

MOUNTING:

Pendant mount is standard. Adjustable wall or ceiling mount bracket (SM) and pole mount (PM) are available as options.

WARRANTY:

5 year LED warranty, see website for full warranty details.

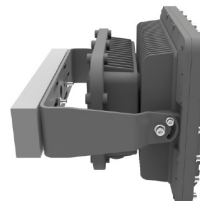
Accessories

MODEL	DESCRIPTION
SM	Adjustable surface mount
PM	Pole mount
SC	Safety cable
WG	Wireguard
SP	10kV Surge protector

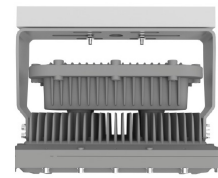
Mounting



Pendant

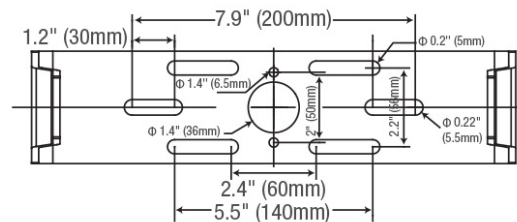
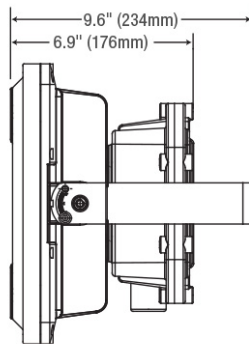
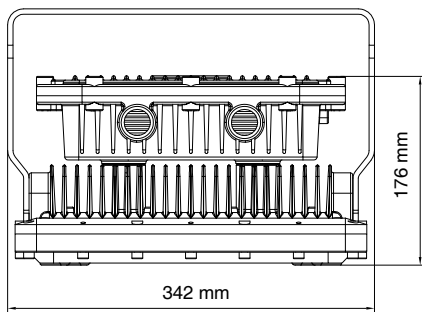


Adjustable Surface



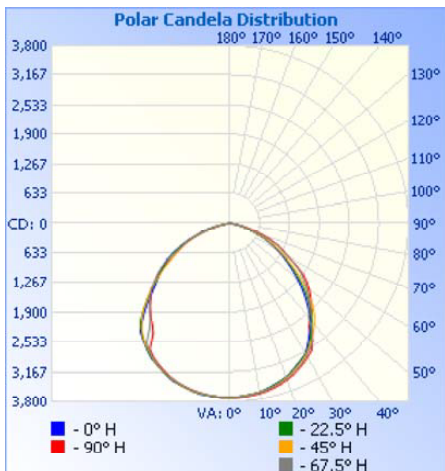
Pole Mount

Dimensions



CAS-4LOW4BWC120

Luminous Intensity Distribution

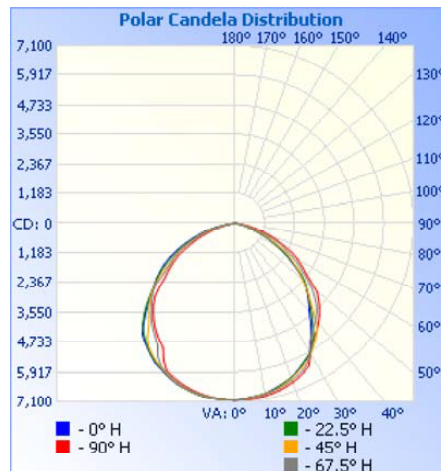


Zonal Lumen Summary

ZONE	LUMENS	% LUMINAIRE
0-30	2945	30%
0-40	4848	46%
0-60	8309	82%
60-90	1420	18%
0-90	9729	100%

CAS-4HOW4BWC120

Luminous Intensity Distribution



Zonal Lumen Summary

ZONE	LUMENS	% LUMINAIRE
0-30	5560	30%
0-40	9080	49%
0-60	15598	85%
60-90	2773	15%
0-90	18371	100%

PHOTOMETRIC DATA

Energy Chart

MODEL	EFFICACY	LUMEN OUTPUT	WATTAGE	CRI	L70 HOURS
CAS-4LOW3BWC	122 lm/W	9787	80W	>70	> 60,000
CAS-4LOW4BWC	122 lm/W	9729	80W	>70	> 60,000
CAS-4MOW3BWC	118 lm/W	11757	100W	>70	> 60,000
CAS-4MOW4BWC	118 lm/W	11770	100W	>70	> 60,000
CAS-4HOW3BWC	121 lm/W	18179	150W	>70	> 60,000
CAS-4HOW4BWC	122 lm/W	18371	150W	>70	> 60,000

CASTEX-4