

SCA

STAIRWELL LED

Designlights Consortium™ qualified for stairwell and passageway luminaires

Type: _____

Project: _____

Delivered Lumens:
3585 - 6327 lm

Input Wattage:
30W & 50W

Efficacy:
Up to 127 lm/W

Colour Temperatures:
3500K, 4000K & 5000K

Projected Lumen Maintenance:
L₇₀ @ 60,000 hrs.

Surface and chain mount standard, 5 different mounting options available



The **SCALA LED** is corrosion, flame and vandal resistant

SCALA LED incorporates **Smart Technology** in bi-level dimming, occupancy sensor, and optional emergency backup for a complete system meeting stairwell lighting requirements

The UV stabilized polycarbonate diffuser eliminates glare and provides even light distribution

The **SCALA LED** is ideal for low occupancy areas such as stairwells, restrooms, corridors, laundry rooms, storage facilities and parking structures

Configurations

MODEL	LENGTH	OPERATION	POWER	COLOUR TEMP	INPUT	MOUNTING (SURFACE & CHAIN MOUNT STANDARD)	OPTIONS
SCA	2 (2 ft)	HT (AC)	LO (3796 lm)	WT35 (3500K)	120-277V	AC ² (aviation cable)	SS (stainless steel clips)
		SA ¹ (AC & Emergency)	HO (6327 lm)	WT40 (4000K) WT50 (5000K)	347V	SPK ³ (single pendant kit) SVLPL (swivel pendant kit) PM (pivot mount 45°) JM ⁴ (junction mount)	FP (3A fuse protection) TPS (tamper proof screws) HHR ⁵ (sensor remote) SP (10kA surge protection)

NOTE¹: SA available in 120-277V only; **NOTE²:** specify length for AC: 50", 72", 100", 150", 250" fully adjustable; **NOTE³:** minimum 6" on SPK; **NOTE⁴:** HT operation only; **NOTE⁵:** for 120-277V only. Sold separately, order as needed.

ELECTRICAL:

108 LED's total; colour temperature: 3500K, 4000K or 5000K; input: 120V-277V or 347V, 50-60 Hz.

DIMMING:

Bi-level dimming is controlled by an occupancy sensor to reduce light output by at least 50% when stairwell is unoccupied as per code.

OPERATING TEMPERATURE:

HT: -40°C to +40°C
SA: +10°C to +35°C

WEIGHT:

5 lbs. / 2.27 kg.

EMERGENCY OPERATION:

Optional emergency operation for a 90 min. duration. Emergency mode provides 1107 lumens. 108 LEDs operational emergency mode. Not available in 347V.

MOUNTING:

Surface mount standard. Additional mounting systems: Aviation Cable (AC50, AC72, AC100, AC150, AC250 or custom), SVLPL (swivel pendant kit), Junction mount (JM) configuration allows for direct mount to recessed junction box, and Pivot (PM) -45° adjustable angle mount.

POWER LINE/FEED:

5-wire, solid type 18awg, provided with hotload disconnect feature.

WARRANTY:

5 year LED warranty, see website for full warranty details.

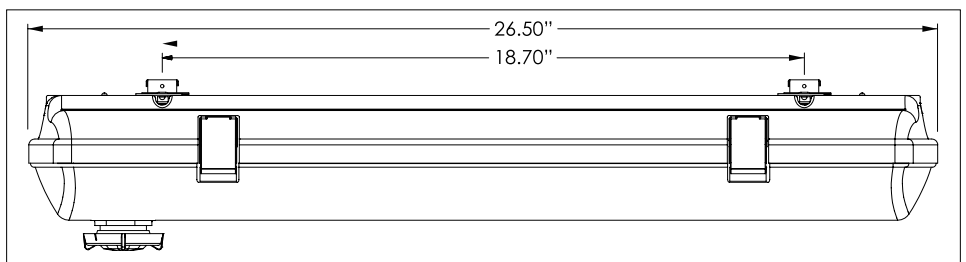
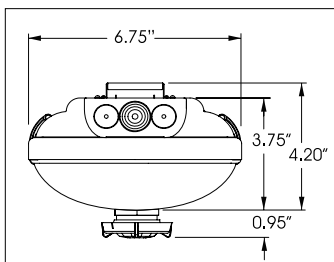
SENSOR:

Multi-cell, multi-tier Fresnel lens with a 360° view, maximum coverage 48' diameter from 8' height (internally 120-277V or externally 347V mounted).

SENSOR DEFAULT SETTINGS:

- High mode: 100% light level (10V)
- Low mode: 50% light level (5V)
- Time delay: 10 min.
- Setpoint: 5fc

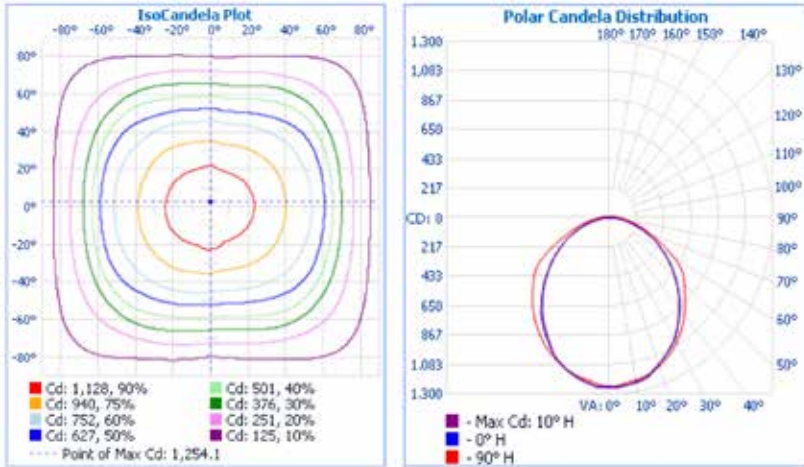
Dimensions



Scala

SCA-2-HT-30W-WT35-120-277V

Luminous Intensity Distribution

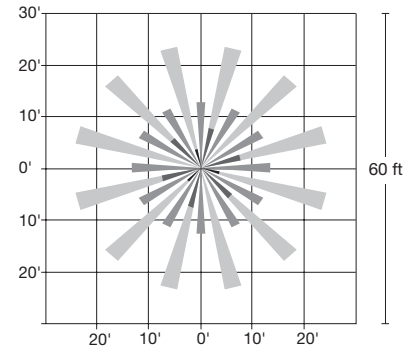


Zonal Lumen Summary

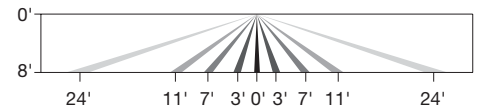
ZONE	LUMENS	% LUMINAIRE
0-30	959	26%
0-40	1567	42%
0-60	2776	75%
60-90	816	22%
0-180	3585	100%

OCCUPANCY SENSOR COVERAGE

Top Coverage Pattern



Side Coverage Pattern



Energy Chart

MODEL	LENGTH	EFFICACY	WATTAGE	LUMEN OUTPUT	CRI	*L70 HOURS
SCA-2-HT-LO-WT35-120-277V	2ft	120 lm/W	30	3585	>80	> 60,000
SCA-2-HT-LO-WT40-120-277V	2ft	123 lm/W	30	3691	>80	> 60,000
SCA-2-HT-LO-WT50-120-277V	2ft	127 lm/W	30	3796	>80	> 60,000
SCA-2-HT-HO-WT35-120-277V	2ft	120 lm/W	50	5975	>80	> 60,000
SCA-2-HT-HO-WT40-120-277V	2ft	120 lm/W	50	6151	>80	> 60,000
SCA-2-HT-HO-WT50-120-277V	2ft	120 lm/W	50	6327	>80	> 60,000

*Projected

Emergency Mode

MODEL	LENGTH	WATTAGE	LUMEN OUTPUT	CRI
SCA-2-SA-XX-WT40-120-277V	2ft	10	1107	>80