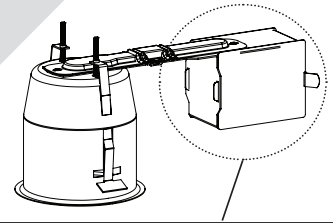


# INSTALLATION INSTRUCTIONS

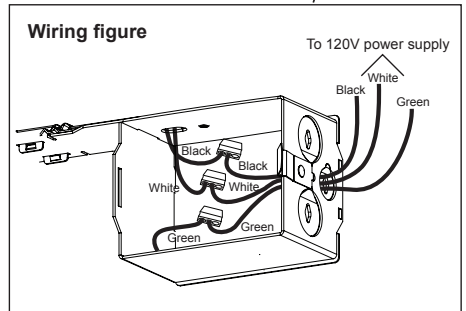
## Remodel Housing Minilux 3-1/2" (GU10)

Approved for installation in insulated ceiling (except polyurethane)

### MIR10

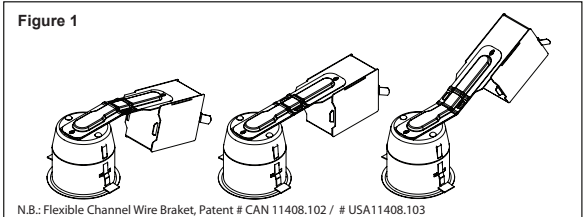
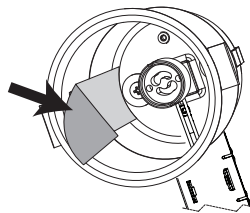


- 1. SHUT OFF ELECTRICAL SUPPLY AT SOURCE.**
- Bring the electrical wiring in the ceiling respecting local electrical codes.
- Cut a Ø 3-5/8" (92 mm) (317164) hole in the ceiling.
- Remove the junction box cover by pushing on the clip. Remove the appropriate knock-out(s) to accommodate your wiring. Connect the wires coming from the power supply to the box wires, and match the color together (White/White, Black/Black, Green/Green, **see Wiring figure**).
- Slide the fixture into position.
- Push the fastening hooks through the lateral openings.
- Fasten the fixture with the adjustment screws.

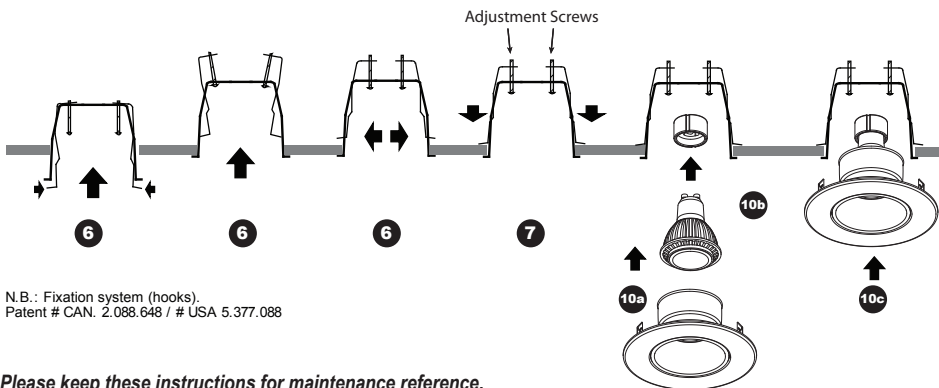
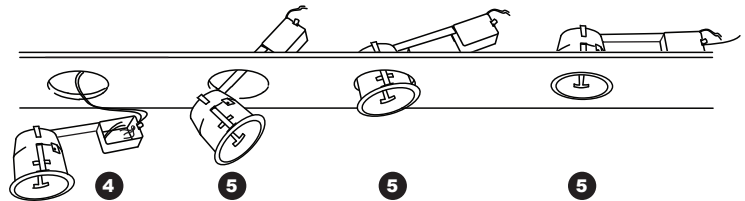


### INSTALLATION OF ALUMINUM TAPE

- Remove the film on the back of the included aluminum tape.
- Install the aluminum tape within the housing as to entirely cover the hooks openings on both sides of the housing.
- Insert:
  - a) the lamp into the trim
  - b) the trim and lamp assembly into the socket
  - c) the trim into the housing



**\*Do not install the supplied lens when using a LED lamp.**



N.B.: Fixation system (hooks).  
Patent # CAN. 2.088.648 / # USA 5.377.088

Please keep these instructions for maintenance reference.



**WARNING** - The use of other company's (non-Contrast) products or components (ex. trims) in conjunction with Contrast products may not be covered by UL approvals, and could be hazardous. Such use automatically voids all Contrast warranty and responsibility from any problems it may occur.



#### WARNING: RISK OF FIRE

Most dwellings built before 1985 have supply wires rated 60° C. Consult a qualified Electrician before installing.



**It is very important not to exceed the lamp wattage indicated.**

**Due to constant evolution of LED lamps and associated dimmers we must test them regularly.**

**We invite you to consult frequently our Web site to find our dimmer compatibility list: [www.contrastlighting.com](http://www.contrastlighting.com)**

**WARRANTY:** CONTRAST LIGHTING M. L. INC. guarantees the components against manufacturing defects for a period of one (1) year, under normal use with proof of purchase. The obligation of the manufacturer consists in the cost of the components and does not cover the cost of labor and transport for replacement. For all claims, please contact your local supplier. See our Web site for additional warranty details. Note: 5 year warranty on driver and LED module.

**CONTRASTE**  
contrastlighting.com

2016-03

PRINTED IN CANADA

1009, rue du Parc Industriel  
Lévis (Québec) G6Z 1C5 Canada

Tel.: 1-888-839-4624  
Fax.: 1-877-839-7057

info@contrastlighting.com

© 2016 Contrast Lighting M.L. Inc.  
All rights reserved

EC666  
103993

Contrast Lighting reserves the right to make changes in specifications and/or to discontinue any product at any time without notice or obligation and will not be liable for any consequences resulting from the use of this publication.

**AIR TIGHT**  
ASTM Test #E283

**UL** US  
LISTED

**FABRIQUÉ AU**  
**CANADA**