

# FL05 Flood / Area Light

180W/210W/240W | 3CCT | 120-347V

**FLEX**  
FL05 FLOOD / AREA LIGHTS

Flood / Area lighting has never been easier with all the features you will ever need in one sleek, attractive package. Stocked in Black and Bronze for quick shipping!

**PRODUCT CODES:** FL05-240W-3P-3CCT-UD-BK, FL05-240W-3P-3CCT-UD-BZ

Mounting Sold Separately  
see reverse for mounting options

Available in Black (BK) or  
Bronze (BZ) Finishes

Power Selectable  
180W / 210W / 240W

Colour Selectable  
3000K / 4000K / 5000K

120-347V Universal Driver  
0-10V dimming

Rugged Die Cast  
Aluminum Housing

Photocell and Sensor Compatible

Easy Field Interchangeable  
Optics (Sold Separately)



## TECHNICAL DATA



### LIGHT SPECIFICATIONS

Efficacy	127.59 lm/W
CCT	3000K/4000K/5000K
CRI	84
Distribution	Type III
Dimmable	0-10V
L70 Life	50,000 hrs
Warranty	10-year

LUMEN OUTPUT			
	3000K	4000K	5000K
180W	25604 lm	27260 lm	26639 lm
210W	28410 lm	30620 lm	29739 lm
240W	31092 lm	34576 lm	33324 lm

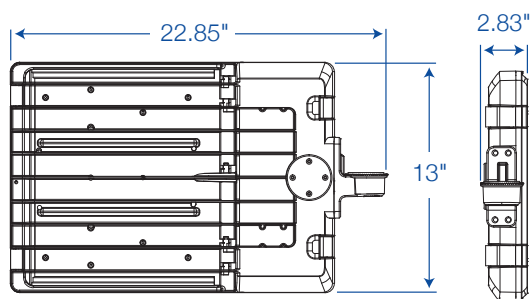
### APPROVALS & LISTINGS

cUL	E495046
DLC Premium	S-RZOPS4, S-WABIQO

### DIMENSIONS AND WEIGHTS

Fixture Weight	13.42 lbs
Fixture Dimensions	22.9 x 2.8 x 13 in
Carton Qty	1
Carton Weight	15.62 lbs
Carton Dimensions	24.8 x 4.84 x 15.94 in

### DIMENSIONAL DRAWINGS (IN)



### ELECTRICAL

Wattage	180W/210W/240W
Voltage	120-347V
Current	2.4A
Surge Protection	10kV
Auxiliary Output	12V
Power Factor	0.9
THD	15%
Operating Temp	-40 to 45°C

### CONSTRUCTION

Cord Whip	78.74"
Housing	Die-Cast Aluminum
Lens	Polycarbonate
Finish	Powder Coated
Finish Colour	Black / Bronze
IP Rating	IP65

### ACCESSORIES\* (Sold Separately)

Slip Fitter	FL-SF01-XX
Fixed Mount	FL-FM01-XX
Multi Mount	FL-MM01-XX
Pole Mount	FL-PM01-XX
Trunnion Mount	FL-TR01-XX
Yoke Mount	FL-YM01-LG-XX
Microwave Motion Sensor	MS04-MW-TW-DC
PIR Motion Sensor	MS01-PIR-TW-DC
Motion Sensor Remote	MS04-RC
Type II Lens	FL-TYPE-II-LG
Type IV Lens	FL-TYPE-IV-LG
Type V Lens	FL-TYPE-V-LG
Visor	FL-VISOR01-LG-XX
Photocell (120-277V)	JL-205LV
Photocell (347V)	JL-207E
Photocell Receptacle**	JL-200
Shorting Cap	JL-208

\*Where XX Denotes Finish Colour - BK, BZ, or WH

\*\*Photocell Receptacle is REQUIRED for use with Photocell

## MOUNTING OPTIONS (SOLD SEPARATELY)



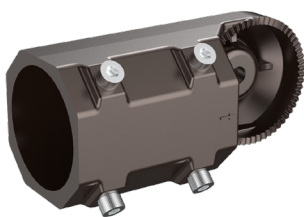
Trunnion Mount

FL-TR01-BK  
FL-TR01-BZ



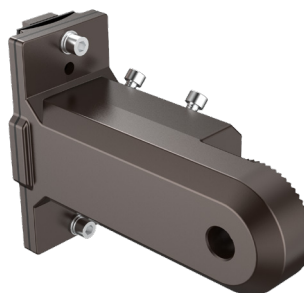
Fixed Mount

FL-FM01-BK  
FL-FM01-BZ



Slip Fitter

FL-SF01-BK  
FL-SF01-BZ



Multi Mount

FL-MM01-BK  
FL-MM01-BZ



Yoke Mount

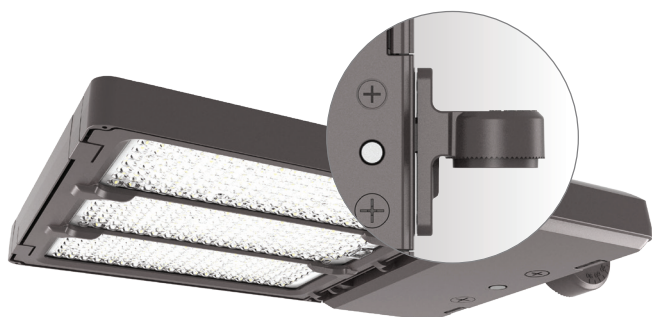
FL-YM01-LG-BK  
FL-YM01-LG-BZ



Pole Mount

FL-PM01-BK  
FL-PM01-BZ

\*Where XX Denotes Finish Colour - BK or BZ



FL05 Flood Light pictured  
without mount



FL05 Flood Light pictured  
with optional **Trunnion Mount**

HEAD OFFICE: 8 - 540 Jamieson Pkwy, Cambridge, ON, N3C 0G5 | [orders@csc-led.com](mailto:orders@csc-led.com) | (519) 880 - 9833