

Street Light

50W | 4000K | 100-277V



Ideal for outdoor applications such as municipal street lighting, parking lots, construction sites, storage and rail yards, industrial locations, marinas, and more.

Twist lock photocell receptacle included

**Accessories required (ordered separately)*



347V Option Available

*** Required Accessories (ordered separately):**

A Photocell (JL-205LV) or a Shorting Cap (JL-208) **must** be added.



JL-205LV



JL-208

TECHNICAL DATA



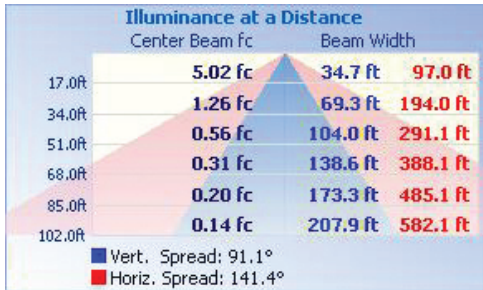
LIGHT SPECIFICATIONS

Lumens	6,675 lm
Efficacy	129 lm/W
CCT	4000K
CRI	70
L70 Life	100,000 hrs
Dimmable	0-10V
Warranty	10-year

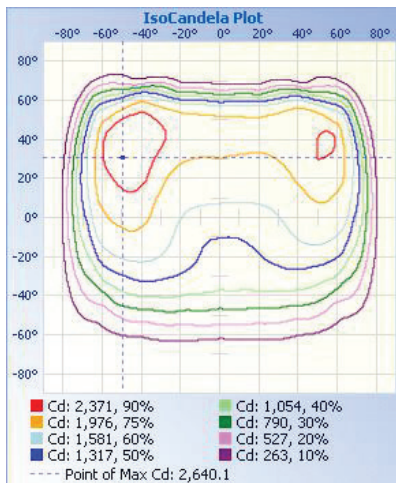
APPROVALS AND LISTINGS

cUL	E482965
DLC Premium	PL2UWFAQSG0N

ILLUMINANCE AT A DISTANCE



ISOCANDELA PLOT



ELECTRICAL

Wattage	50W
Voltage	100-277V
Power Factor	0.9
THD	15%
Operating temp	-40 to 40°C

CONSTRUCTION

Housing	Aluminum
Finish	Grey
IP Rating	IP65
Weight	5.18 lbs
Carton qty	1

ACCESSORIES (Ordered Separately)

Photocell	JL-205LV
Shorting Cap	JL-208

IMPORTANT: Includes Twist Lock Receptacle. A Photocell or a Shorting Cap must be added and is ordered separately.

DIMENSIONS

