

# ST02B Street Light

50W | 4000K | 120-277V

Ideal for outdoor applications such as municipal street lighting, parking lots, construction sites, storage and rail yards, industrial locations, marinas, and more



**Required** Accessories (Sold Separately):

A Photocell (JL-205LV) or a Shorting Cap (JL-208) **must** be added.



JL-205LV



JL-208

## TECHNICAL DATA



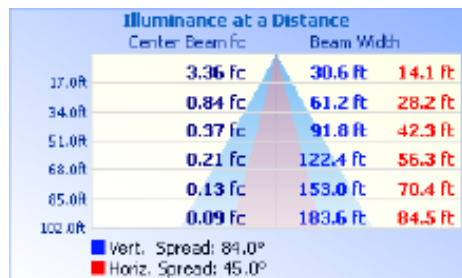
### LIGHT SPECIFICATIONS

Lumens	6,481 lm
Efficacy	136.56 lm/W
CCT	4000K
CRI	74
L70 Life	>60,000 hrs
Dimmable	0-10V
Warranty	10-year

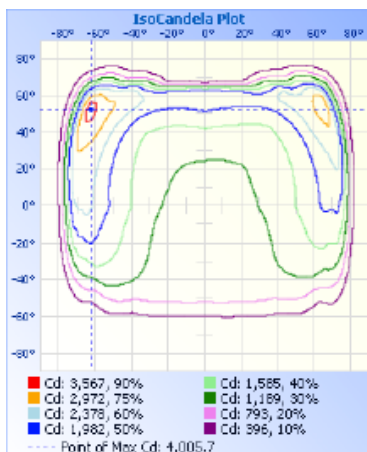
### APPROVALS AND LISTINGS

cUL	E482965
DLC	TBA

### ILLUMINANCE AT A DISTANCE



### ISOCANDELA PLOT



### ELECTRICAL

Wattage	50W
Voltage	120-277V
Power Factor	>0.9
THD	15%
Operating temp	-40 to 40°C

### CONSTRUCTION

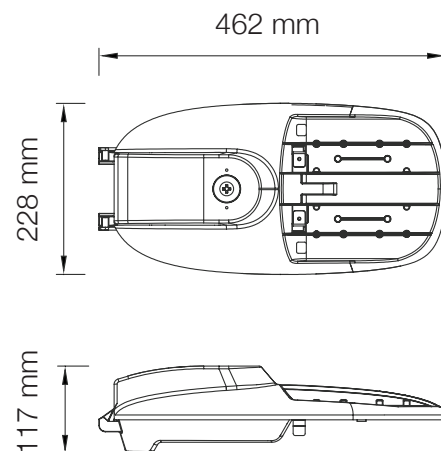
Housing	Aluminum
Finish	White
IP Rating	IP65
Gross Weight	4.3 kg
Carton Qty	1
Carton Dimensions	507 x 248.5 x 157 mm

### ACCESSORIES (Ordered Separately)

Photocell	JL-205LV
Shorting Cap	JL-208

**IMPORTANT:** Includes Twist Lock Receptacle. A Photocell or a Shorting Cap must be added and is ordered separately.

### DIMENSIONS



Western Canada Warehouse: 121-1647 Broadway Street, Port Coquitlam, BC V3C 6P8 | [ordersbc@csc-led.com](mailto:ordersbc@csc-led.com)