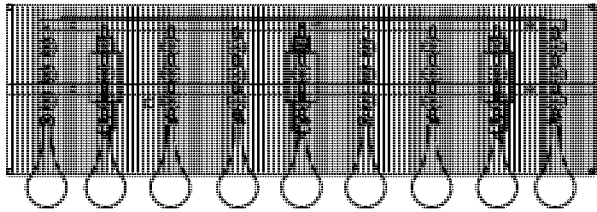


Trade Mark:
CRYSTAL WORLD INC

Product Name: Wall lamp
Model :5005W18C-RC
120Vac, 60Hz,AC ONLY
Lamp Size:W18"xH7"xE5"

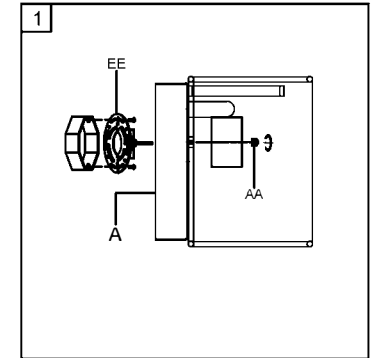


WALL LAMP ASSEMBLY INSTRUCTIONS

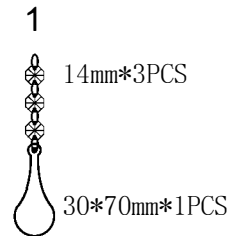
1. Place fixture(A) onto Butterfly (EE).
Secure with cap nuts (AA).

Hardware Used

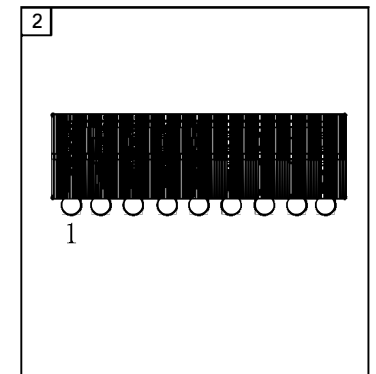
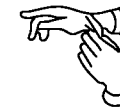
AA Cap nut  X 2




2. Please hang the crystal (1) to the fixture.



11PCS



3. Install light bulbs (not included).
Use bulb  **120V G9 3*40W Max.**

