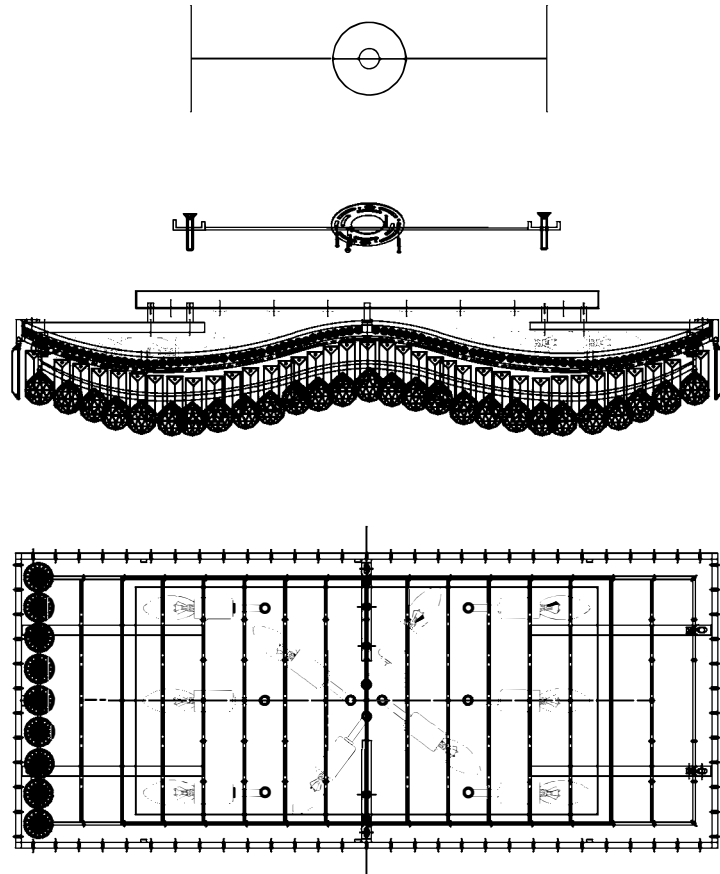



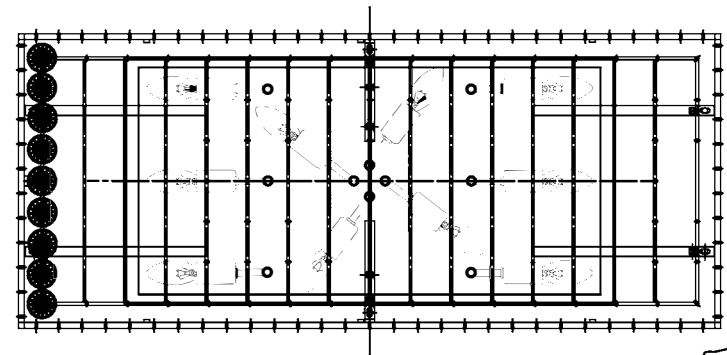
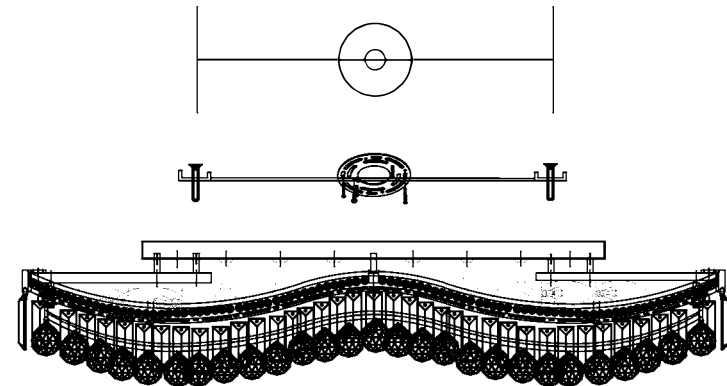
Product Name: Ceiling lamp
 Model :5051C39C
 120Vac, 60Hz,AC ONLY
 Lamp Size:L39"*W16"*H8"

Trade Mark:
 CRYSTAL WORLD INC



PENDANT LAMP ASSEMBLY INSTRUCTIONS

1. Please take off the plastic sheet from the lamp body.
2. Install bulbs(NOT INCLUDED).USE **120V E12**  **10*60W Max.**



1



110 PCS

2



207 PCS

