

# Assembly Instruction Sheet #S-8318P60C For Style 8318P60C

Tools Required: Flathead screwdriver, Phillips screwdriver, pliers, wire cutters, wire strippers, electrical tape, safety glasses.  
Light Source: (4) E12 Candelabra Base Bulbs 60W Maximum (Not Included).  
Estimated Assembly Time: 20-30 minutes

Preparation: Identify and inspect all parts before beginning installation. Check package content list and diagrams below to be sure all parts are present. If any parts are missing or damaged, do not attempt to assemble, install, or operate the fixture. Contact customer service for replacement parts.

### ⚠ Warnings and Cautions

Turn off electricity at circuit breaker or main fuse box before installation. Consult a licensed electrician if in doubt. These instructions are provided for your safety. It is very important you read them completely before installing the fixture. We strongly recommend that a licensed, professional electrician perform the installation. Disconnect fixture from power source before replacing bulbs. Make sure bulbs are given sufficient time to cool before removal.

### STEP 1 - Install Support Arms

(Refer to SUPPORT ARMS DISTRIBUTION) Pass supply wires from support arms through plates with coupling and plates with socket as shown. Secure them together by threading lock screws onto the plates. Hand tighten until snug with screwdrivers.

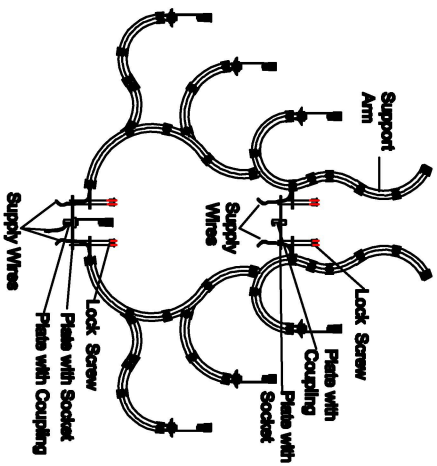


Figure 1

### SUPPLY WIRES DISTRIBUTION

### STEP 2 - Install Cap, Crystal Cap and Fixture Loops

A. Pass supply wire and ground wire through the plate with coupling.

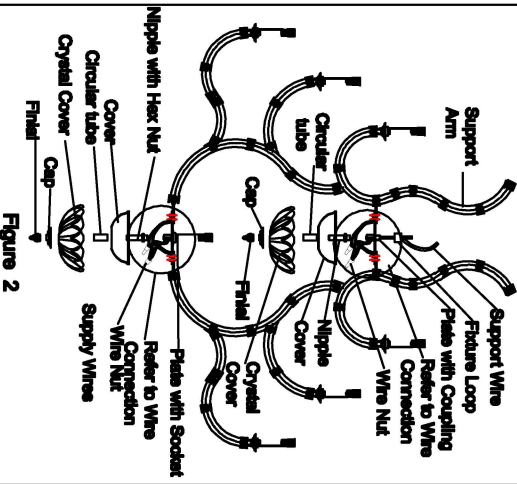


Figure 2

Smooth side of supply wire identified with the label "L"  
Ribbed side of supply wire identified with the label "N"

### WIRE CONNECTIONS

### (Step 2 Continued)

- Use supplied wire nuts to make all wire connections and fixture loop. Try to make connections A and B. Tighten connections until wires are tightly joined together. Wrap each connection with approved electrical tape.
- Thread one end of the nipple into the coupling on the plate with coupling. Place one cover, one crystal cover and one cap over the end of the nipple and secure with one fihel. Hand tighten until snug.
- Thread the hex nut end of the nipple with hex nut into the hex coupling on the plate with socket. By using pliers, thread the hex nut against the hex coupling and hand tighten until snug. Place another cover, crystal cover and cap over the end of the nipple with hex nut. Secure them with another fihel and hand tighten until snug.
- Thread the fixture loop onto the top center of the plate with coupling and hand tighten until snug.

### STEP 3 - Install the Crossbar to the Ceiling

- Place the crossbar to the ceiling and make (4) marks from the holes of the crossbar on the ceiling for anchors. Remove the crossbar and drill proper holes from the (4) marks for anchors.
- Insert anchors into drilled holes properly. Place the crossbar, flat washers and spring washers onto the anchors and secure with hex nuts. Hand tighten until snug with pliers.

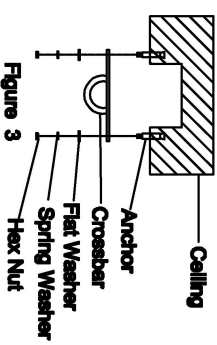


Figure 3

### STEP 4 - Install Chain System and Fixture Body together

- Remove the bolt from the quick connector. Place the quick connector onto the chain link of the bottom end of the chain system.
- Place the fixture loop inside of the quick connector. Thread the lock link onto the quick connector and the fixture loop. Hand tighten until snug to connector the chain system to the fixture.

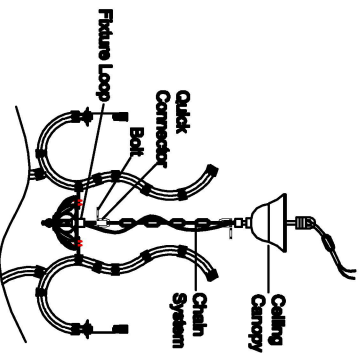


Figure 4

### STEP 5 - Install Fixture to Crossbar

- Remove the bolt from the quick connector. Place the quick connector onto the hook of the crossbar.
- Insert the loop on the top end of the chain system inside of the quick connector. Thread the bolt back onto the quick connector and through the loop of the chain system. Hand tighten until snug to hang the fixture safely.
- Refer to Step 8 for wire connection instructions.
- Loosen the ceiling canopy upward, over the crossbar, attach onto the ceiling. Using screwdriver, thread set screw on the ceiling canopy until snug to secure the ceiling canopy.

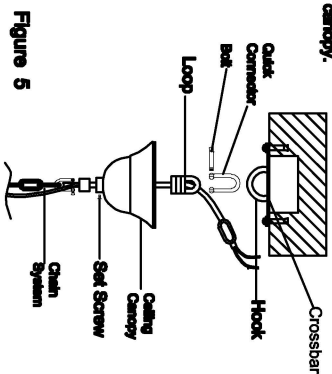


Figure 5

### STEP 6 - Making the Wire Connections

- Use standard wire connectors (not included) to make all wire connections. Tighten connectors until wires are tightly joined together. Wrap each connection with approved electrical tape and carefully strip all the connected wires into outlet box.
- Note: If the electrical wire is going to be cut shorter than provided you will need to identify the "L" line wire and the "N" neutral wire before you cut the excess wire off. One is labeled N and the other labeled L. To do this separate the "L" line wire and the "N" neutral wire as far as you need to. Re-label the wire near where you want to make the cut. Be sure to mark the wire on the side of the fixture and not on the excess wire being cut and removed.

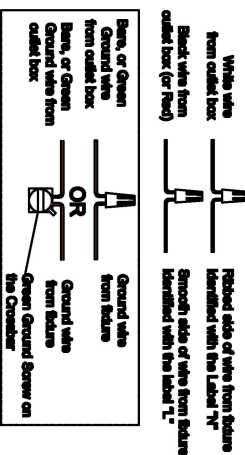


Figure 6