

**SPECIFICATION SHEET**

**SUBJECT**

**LED CHB Extreme High Bay**

**CUSTOMER PROJECT**

Project: \_\_\_\_\_  
 Type: \_\_\_\_\_  
 Cat. No.: \_\_\_\_\_  
 Qty: \_\_\_\_\_  
 Date: \_\_\_\_\_  
 EEL Rep: \_\_\_\_\_



**solutions closer to nature**

Telephone: 905 415 8878 Fax Number: 905 415 8872 Toll Free Telephone: 855 415 8878 Toll Free Fax: 855 415 8872

**DESCRIPTION**

The LED CHB Extreme have a similar look and feel of the traditional high bay luminaires. Operating temperature -40°C – 50°C. They are suitable for wet locations and ideal for large indoor spaces, such as warehouses, industrial buildings, churches, gymnasiums, swimming pools and shopping malls.

**SPECIFICATION FEATURES**

**Construction**

Pure lighter-weight aluminum shell housing with improved heat dissipation; high light reflectivity reflectors with more efficient fin and groove design. 10 ft cable included. Applicable for Food Safety Ratings Environment.

**Electrical**

CHBU has a High Performance Long Life LED System complete with electrical drivers for optimal performance  
LED's available in 5000K and 4000K, with a typical CRI: >80  
130LPW  
Operating Temperature: -40°C - 50°C  
1-10V Dimmable  
Electronic Drivers are available in 100-277 / 277-480 Volt  
Surge Protection (6KV)  
L70 > 240,000h  
L<sub>36000</sub> = 94.9%

**Mounting**

Suspension mount  
When the ceiling has proper insulation: fixture can be mounted as close to the ceiling surface but not direct contact  
When the ceiling does not have proper insulation: fixture can be mounted as close to 1 foot away from the ceiling

**Finish**

Black finish  
White finish (150W) available

**Beam Angle**

110° degrees standard

**Compliance**

IP66, NEMA 4X, cULus, DLC, NSF/ANSI 2

**Warranty**

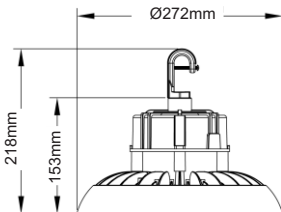
5 years



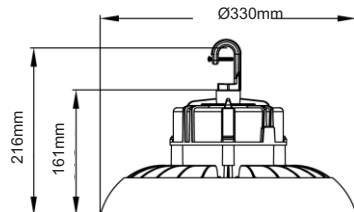
**CHB EXTREME  
LED HIGH BAY**

**BLACKSTAR<sup>e</sup>  
CHB extreme**

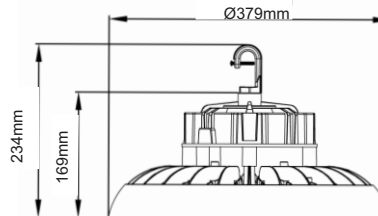
\* H2= Height with Hook



**CHBU-100W  
Dimensions**  
mm | 272(Ø) x 153(H) x 218(H2)  
inch | 10.7(Ø) x 6(H) x 8.6(H2)



**CHBU-150W  
Dimensions**  
mm | 330(Ø) x 161(H) x 216(H2)  
inch | 13(Ø) x 6.3(H) x 8.5(H2)



**CHBU-200W  
Dimensions**  
mm | 379(Ø) x 169(H) x 234(H2)  
inch | 15(Ø) x 6.7(H) x 9.2(H2)

Available In White -  
4K & 5K in 150W ONLY





**ORDERING CODE, ENERGY AND PERFORMANCE DATA**

	Model No.	Delivered Lumens (lm)	Input Watts (W)	Voltage (V)	Colour Temp. (K)	Efficacy (lm/W)	Certification	Compliance	Type
	CHBU-100W-110-H-40K	12663	99	100-277	4000K	128	c UL US DLG NSF	NEMA 4X NEMA 4X	Standard
	CHBU-100W-110-H-40K-HV	12645	98	277-480	4000K	129			
	<b>Black</b>								
	CHBU-100W-110-H-50K	13018	99	100-277	5000K	132	c UL US DLG NSF	NEMA 4X NEMA 4X	Standard
	CHBU-100W-110-H-50K-HV	13138	99	277-480	5000K	133			
	<b>Black</b>								
	CHBU-150W-110-H-40K	19493	151	100-277	4000K	129	c UL US DLG NSF	NEMA 4X NEMA 4X	Standard
	CHBU-150W-110-H-40K-HV	20103	147	277-480	4000K	136			
	<b>Black &amp; White</b>								
	CHBU-150W-110-H-50K	19665	150	100-277	5000K	131	c UL US DLG NSF	NEMA 4X NEMA 4X	Standard
	CHBU-150W-110-H-50K-HV	20444	148	277-480	5000K	138			
	<b>Black &amp; White</b>								
	CHBU-200W-110-H-40K	25681	202	100-277	4000K	130	c UL US DLG NSF	NEMA 4X NEMA 4X	Standard
	CHBU-200W-110-H-40K-HV	26293	196	277-480	4000K	134			
	<b>Black</b>								
	CHBU-200W-110-H-50K	26588	202	100-277	5000K	131	c UL US DLG NSF	NEMA 4X NEMA 4X	Standard
	CHBU-200W-110-H-50K-HV	26960	197	277-480	5000K	137			
	<b>Black</b>								

**NOTE:**  
• Lumens are estimated

**Optional Accessories**

- CHBU-150W-FL | Frosted Lens for 150W
- CHBU-200W-FL | Frosted Lens for 200W
- CHBU-100-WG | Wire Guard for 100W
- CHBU-150-WG | Wire Guard for 150W
- CHBU-200240-WG | Wire Guard for 200W / 240W
- CHBU-100-PCR | 90° PC Reflector for 100W
- CHBU-150-PCR | 90° PC Reflector for 150W
- CHBU-200240-PCR | 90° PC Reflector for 200W / 240W
- CHBU-100-ALUR-SR | 100° Aluminum Reflector (Silver) for 100W
- CHBU-150-ALUR-SR | 100° Aluminum Reflector (Silver) for 150W
- CHBU-200240-ALUR-SR | 100° Aluminum Reflector (Silver) for 200W / 240W

**Controls (Optional Sensor & Mounting Accessories):**

- MS347 | Motion Sensor Device (120/277/347, IP65) + CHBU-SMARM
- MC054V | Microwave Motion Sensor (120-277V, IP65) + CHBU-SMARM
- CHBU-SMARM | CHBU Sensor Mounting Arm
- ULT-HC419S | On-Off Sensor Control 120-277V + CHB-SBC
- ULT-HC419V | Tri-level Dimming Control 120-277V + CHB-SBC
- CHB-SBC | Sensor Bracket Cover for CHB (IP20)
- YM2502 | High Bay Occupancy Sensor + WATERPROOF5HJBOX
- WATERPROOF5HJBOX | Waterproof Junction Box with Bracket for Wiring (5 Holes) (Damp Location Only)

**Optional Sensor & Mounting Accessories**



CHBU with HC419 Sensor Installed



CHBU with MS347 Sensor or MC054V Installed



CHBU with YM2502 Sensor Installed



CHBU with HC419 Sensor Installed



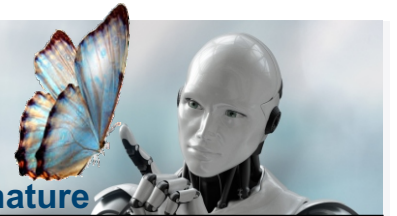
CHBU with MS347 Sensor or MC054V Installed



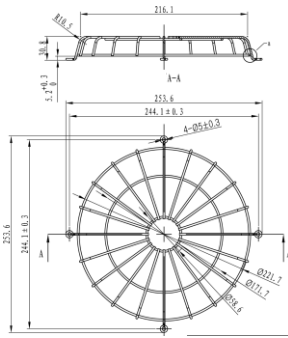
CHBU with YM2502 Sensor Installed



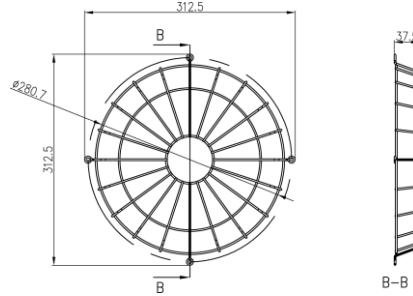
Please allow for tolerance on specifications and dimensions.  
If required, please consult EEL.



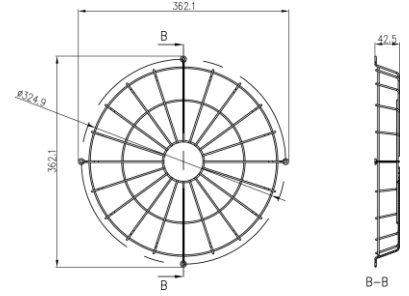
Optional Accessories



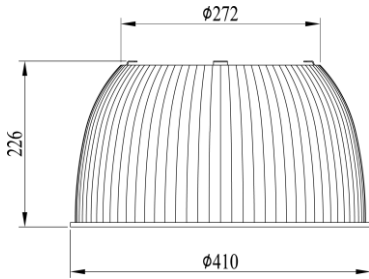
CHBU100WG



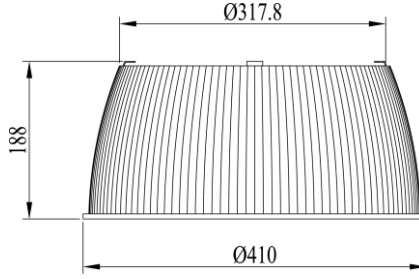
CHBU150WG



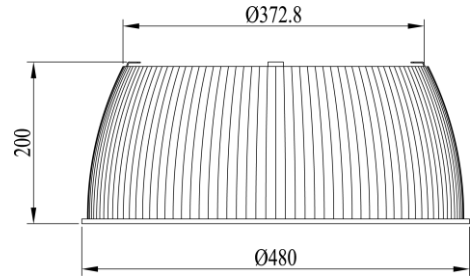
CHBU200240WG



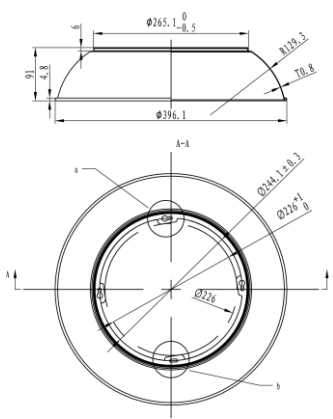
CHBU100PCR



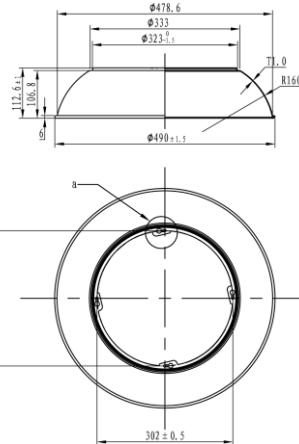
CHBU150PCR



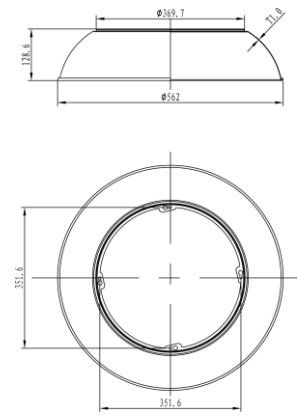
CHBU200240PCR



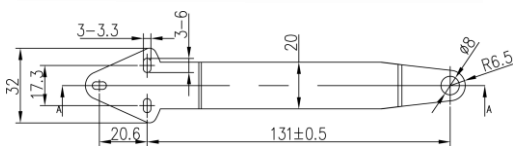
CHBU100ALURSR



CHBU150ALURSR



CHBU200240ALUR



CHBU-SMARM

