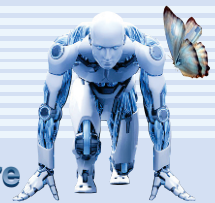


CUSTOMER PROJECT

Project: _____
 Type: _____
 Cat. No.: _____

 Qty: _____
 Date: _____
 EEL Rep: _____



solutions closer to nature

Telephone: 905 415 8878 Fax Number: 905 415 8872 Toll Free Telephone: 855 415 8878 Toll Free Fax: 855 415 8872

PRODUCT DESCRIPTION

Our Flood Light series employs a robust octagonal design for optimal optical strength and durability, and is available in 15W, 30W, and 50W with optional integrated photocell (on the 30W and 50W models). The 124 lm/W FL-Series is ideal for outdoor applications. Its unique broad beam provides excellent lighting coverage.



FLOOD LIGHT

SPECIFICATION FEATURES

Construction

Aluminium Alloy 383 (ADC12) metal housing.

Radial angular gauge on junction joint of mounting accessories.

Optional integrated photocell (on 30W and 50W models).

Breathing valve on underside of fixture. Note: To maintain structural integrity and IP65 rating of fixture, do not tamper with valve.

Electrical

120-277V, up to 4kV Surge Protection
 $L_{70} = 143,000\text{hrs}$

Mounting

Knuckle Mount (1/2" NPT) for 15W & 30W models. A 1/2" lock nut is required and not included.

Yoke Mount for 50W model.

Finish

Gunmetal Grey

Shielding

Polymer optical lens with plano-convex micro-lenses.

Beam Angle

80°x110°

Compliance

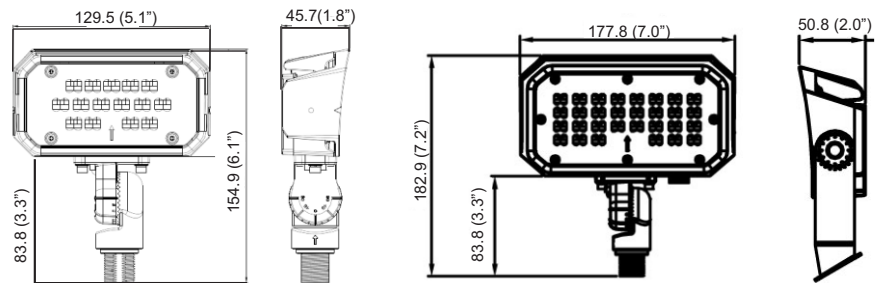
cULus, IP65, DLC

Warranty

5 years

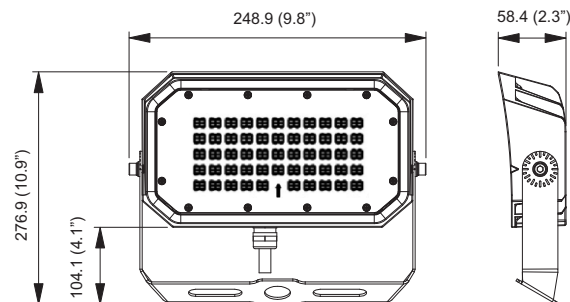
Environment Usage

Suitable for Outdoor Wet Locations
 Operating Temperature = -40°C to 45°C



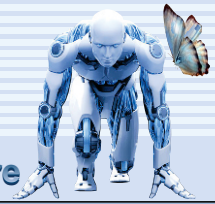
FL-15W40K-K-80X110
Dimensions
 mm | 129.5(L) x 45.7(W) x 154.9(H)
 inch | 5.1(L) x 1.8(W) x 6.1(H)

FL-30W40K-K-80X110
Dimensions
 mm | 177.8(L) x 50.8(W) x 182.9(H)
 inch | 7.0(L) x 2.0(W) x 7.2(H)









FL-50W40K-Y-80X110
Dimensions
 mm | 248.9(L) x 58.4(W) x 276.9(H)
 inch | 9.8(L) x 2.3(W) x 10.9(H)






ORDERING CODE, ENERGY AND PERFORMANCE DATA

Model No.	Delivered Lumens (lm)	Input Watts (W)	Voltage (V)	Colour Temp. (K)	Efficacy (lm/W)	Certification
 FL-15W40K-K-80X110	1974	16	120-277	4000K	124	
 FL-30W40K-K-80X110	3778	31	120-277	4000K	124	
 FL-50W40K-Y-80X110	6180	50	120-277	4000K	124	

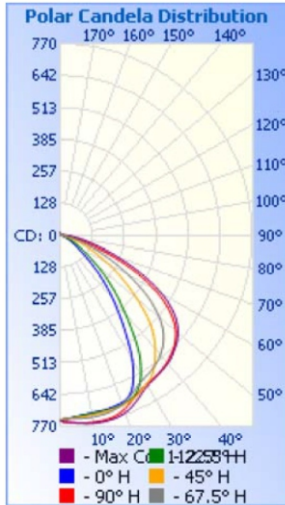
NOTE:
• Lumens are estimated

OPTIONAL ACCESSORIES

 FL-PC|Photocell for Flood Light (for 30W and 50W models only).
Cannot be sold separately. Must be pre-installed by Energy Efficient Lighting Ltd.

Photometrics

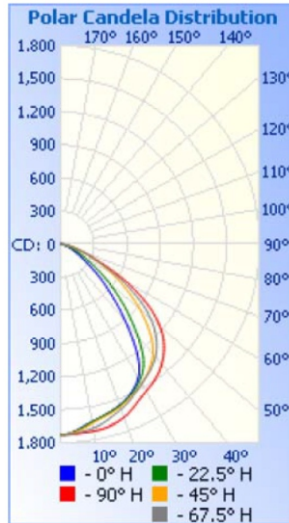
FL-15W40K-K-80X110



Zonal Lumen Summary

Zone	Lumens	% Lamp	% Luminaire
0-30	610.5	29.1%	29.1%
0-40	1,014.0	48.4%	48.4%
0-60	1,768.4	84.4%	84.4%
60-90	299.3	14.3%	14.3%
70-100	102.6	4.9%	4.9%
90-120	12.4	0.6%	0.6%
0-90	2,067.7	98.7%	98.7%
90-180	26.9	1.3%	1.3%
0-180	2,094.6	100%	100%

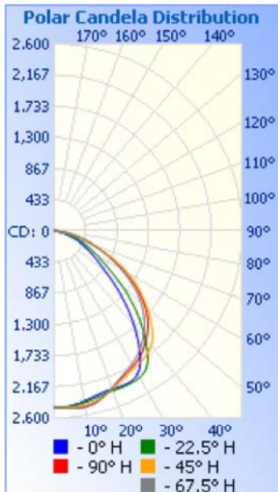
FL-30W40K-K-80X110



Zonal Lumen Summary

Zone	Lumens	% Lamp	% Luminaire
0-30	1,359.2	32.3%	32.3%
0-40	2,227.5	52.9%	52.9%
0-60	3,678.8	87.4%	87.4%
60-90	477.0	11.3%	11.3%
70-100	156.8	3.7%	3.7%
90-120	22.4	0.5%	0.5%
0-90	4,155.8	98.7%	98.8%
90-180	52.3	1.2%	1.2%
0-180	4,208.1	100%	100%

FL-50W40K-Y-80X110



Zonal Lumen Summary

Zone	Lumens	% Lamp	% Luminaire
0-30	1,973.4	28.8%	28.9%
0-40	3,279.6	47.9%	48%
0-60	5,631.5	82.3%	82.3%
60-90	1,122.3	16.4%	16.4%
70-100	434.4	6.3%	6.4%
90-120	38.0	0.6%	0.6%
0-90	6,753.8	98.7%	98.8%
90-180	85.3	1.2%	1.2%
0-180	6,839.0	100%	100%

