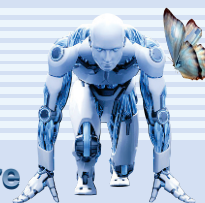


**GARAGE CANOPY LIGHT**

**CUSTOMER PROJECT**

Project: \_\_\_\_\_  
 Type: \_\_\_\_\_  
 Cat. No.: \_\_\_\_\_  
 \_\_\_\_\_  
 Qty: \_\_\_\_\_  
 Date: \_\_\_\_\_  
 EEL Rep: \_\_\_\_\_



solutions closer to nature

Telephone: 905 415 8878 Fax Number: 905 415 8872 Toll Free Telephone: 855 415 8878 Toll Free Fax: 855 415 8872

**PRODUCT DESCRIPTION**

The low profile garage light from EEL provides a compact look while for increased headroom. This improved model builds upon the robust structure of previous garage lights while offering excellent thermal transfer. Suitable for a wide range of applications including parking garages, tunnels, arcades and canopied structures.



**LED  
GARAGE CANOPY  
LIGHT**

**SPECIFICATION FEATURES**

**Construction**

Die Cast Aluminum Housing to provide excellent thermal transfer. Equipped with side knockouts at three edges to accommodate flexible installation options. Mechanical fasteners at the fold-able hinge, allowing for convenient opening/closing of cover, while eliminating need for additional screws. Detachable cover for simpler and faster mounting. Integrated rectangular window for internal sensor to maintain integrity and rating of fixture accessories. Heat dissipation fins along periphery to maximize temperature tolerance

**Control**

Internal Tri-level Sensor (optional)

**Electrical**

120-347V; L70 > 60,000 hrs, 0-10V dimming  
 Electronic Drivers are surge protected with 2KV for 45W & 4KV for 65W

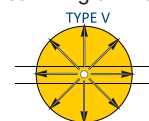
**Mounting**

Surface Mount  
 Conduit Mount  
 Pendant Mount

Note: For Wet location compliance, fixture must be properly sealed. Apply weatherproof silicone sealant (not provided) all along the top and sides of the fixture to ensure the fixture is sealed tightly against the surface. DO NOT seal the bottom of the fixture. Apply weatherproof silicone sealant on wiring access holes and mounting screw head. Failure to do such shall render the warranty null and void.

**Beam Angle**

Type V, Beam Angle = 150°



**Finish**

White

**Shielding**

Polycarbonate (PC) lens attached to cover with individual "lens pockets" over each LED for efficient lighting spread and directional control

**Compliance**

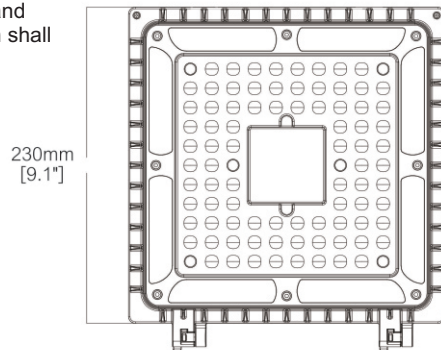
cULus, DLC, IP65

**Warranty**

5 years

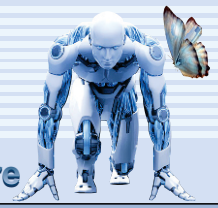
**Environment Usage**

Suitable for Outdoor Wet Locations  
 Operating Temperature = -40°C to 45°C



**GC-65W**  
**GC-45W**  
**Dimensions**  
 mm | 230(L) x 230(W) x 73.5(H)  
 inch | 9.1(L) x 9.1(W) x 2.9(H)





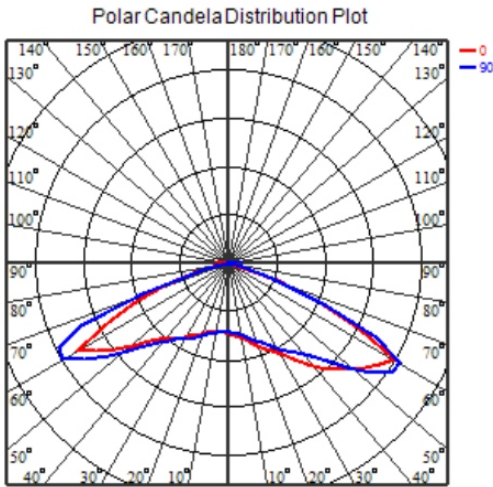
**ORDERING CODE, ENERGY AND PERFORMANCE DATA**

	Model No.	Delivered Lumens (lm)	Input Watts (W)	Voltage (V)	Colour Temp. (K)	Efficacy (lm/W)	Certification
	GC-65W50K-MV	9121	64	120-347	5000K	143	
	GC-65W40K-MV	9108	64	120-347	4000K	142	
	GC-45W50K-MV	6984	46	120-347	5000K	151	
	GC-45W40K-MV	6975	47	120-347	4000K	149	

**NOTE:**  
• Lumens are estimated

**OPTIONAL ACCESSORIES**  
HD407V-CR(120-277V) | Haisen Tri-level/Bi-level Sensor  
DISCONNECT2P | UL and CSA listed, Luminaire disconnect, 2-pole, 6A, 600V

**PHOTOMETRY**



Please allow for tolerance on specifications and dimensions.  
If required, please consult EEL.

