

SPECIFICATION SHEET

SUBJECT

UT MAGNETIC LED DOWNLIGHT

CUSTOMER PROJECT

Project: _____
Type: _____
Cat. No.: _____
Qty: _____
Date: _____
EEL Rep: _____

EELighting

solutions closer to nature

Telephone: 905 415 8878 Fax Number: 905 415 8872 Toll Free Telephone: 855 415 8878 Toll Free Fax: 855 415 8872

DESCRIPTION

The UT Magnetic LED Downlight fits anywhere you need for general light source. It fits in multi-applications and features multiple colours (interchangeable magnetic trims). It can be mounted to a compatible 4" recessed housing or attached to a standard 4" octagon junction box. This recessed luminaire is IC air tight rated, dimmable and suitable for wet locations. It is ideal for residential, office, soffits, drop ceilings, attics, hallways, bathrooms, kitchens, basements, entry ways and elevators.

SPECIFICATION FEATURES

Construction

Round fixture with integral LEDs. Durable, die cast aluminum for optimal heat dissipation with stainless steel trims.

Controls

Built-in on-board LED driver.

Electrical

Ambient Temperature: -20°C ~40°C

CRI: 80

Input voltage: AC 120V (built-in on-board driver)

100% - 10% TRIAC/ELV dimmable

Lifetime rated for >50,000 hours

8 Watt equivalent to 30 Watt halogen

Mounting

Use friction blades (accessory) to mount the fixture to a compatible 4" recessed housing or use the screw included to attach the fixture to a standard 4" octagon junction box

Beam Angle

110°

Finish

Painted black durable airtight aluminum body
Interchangeable stainless steel magnetic trims (White, Black, Brushed Nickel, Copper)
(oil based spray painted for white and black trims)

Shielding

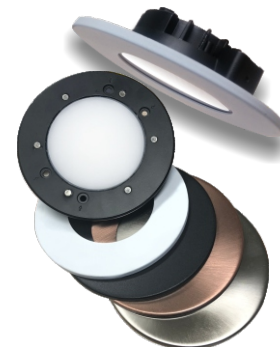
Glass Diffuser

Compliance

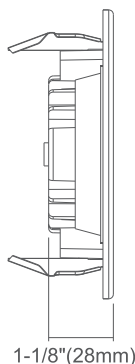
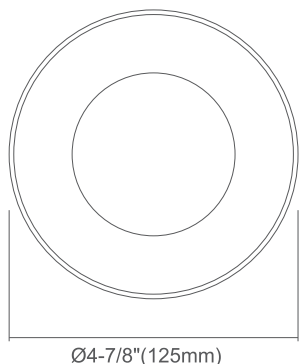
cETLus and Energy Star (pending)

Warranty

5 years



UltraThin **MAGNETIC**
changing faces



MULED-4-S8W

Dimensions

OD 4-7/8" (125mm)

Thickness 1-1/8" (28mm)

*Specification not finalized

www.eelighting.ca



EELSS18W47



ORDERING CODE, ENERGY AND PERFORMANCE DATA

| Model No. | Delivered Lumens (lm) | Input Watts (W) | Voltage (V) | Colour Temp. (K) | Efficacy | Certification | Type |
|------------------|-----------------------|-----------------|-------------|------------------|----------|---------------|----------|
| MULED-4-S8W-3KWH | 500 | 8 | 120 | 3000K | 62.5 | | Standard |
| MULED-4-S8W-4KWH | 510 | 8 | 120 | 4000K | 63.75 | | Standard |

NOTE:

- Lumens are estimated

Optional Accessories

- MULED-TRIM-4-BK | UltraThin Magnetic Trim 4" Black
- MULED-TRIM-4-CP | UltraThin Magnetic Trim 4" Copper
- MULED-TRIM-4-BN | UltraThin Magnetic Trim 4" Brushed Nickel
- MULED-RFKIT | Retrofit Mounting Clips and E26 Base Adaptor for MULED



white detachable
face plate included

- MULED-TRIM-4-BK | UltraThin Magnetic Trim 4" Black
- MULED-TRIM-4-CP | UltraThin Magnetic Trim 4" Copper
- MULED-TRIM-4-BN | UltraThin Magnetic Trim 4" Brushed Nickel
- MULED-RFKIT | Retrofit Mounting Clips and E26 Base Adaptor for MULED

MULED-RFKIT | Retrofit Mounting Clips and E26 Base Adaptor for MULED

*Specification not finalized

Please allow for tolerance on specifications and dimensions.
If required, please consult EEL.

