

**SPECIFICATION SHEET**

**SUBJECT**

**LED QUICK KIT**

**CUSTOMER PROJECT**

Project: \_\_\_\_\_  
 Type: \_\_\_\_\_  
 Cat. No.: \_\_\_\_\_  
 Qty: \_\_\_\_\_  
 Date: \_\_\_\_\_  
 EEL Rep: \_\_\_\_\_



**solutions closer to nature**

Telephone: 905 415 8878 Fax Number: 905 415 8872 Toll Free Telephone: 855 415 8878 Toll Free Fax: 855 415 8872

**DESCRIPTION**

Remove the energy cost without removing the fixture. Q kit is a complete quick installation, transformation to LED. Clients keep their original fixtures while saving time and money by converting to LED. The Q kit is priceless when it comes to renovating nostalgic hotels, condominiums, apartment buildings and event spaces.

**SPECIFICATION FEATURES**

**Construction**

Retrofit kit consists of a LED module and a LED driver available in 4 sizes: 10-inch circular, 8-inch circular, 8-inch rectangular and 7-inch semi-circular

**Electrical**

Long life LED system coupled with electrical driver to deliver optimal performance  
 Triac dimmable  
 3000K and 4000K with typical CRI: 80  
 Ambient temperature -40°C to 40°C  
 LED modules rated for 180,000 hours @ 85°C

**Compliance**  
 cULus

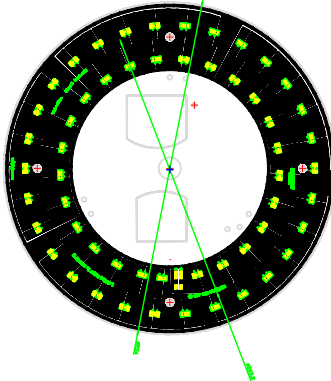
**Warranty**  
 3 years



Qkits are Energy Star listed as "Subcomponent Compliance" meaning : that they are recognized by Energy Star to be enclosed in a full fixture. This documentation allows for the submission of completed fixtures containing a Qkit for an Energy Star rating proper. Energy Star certification remains the final decision of the association.



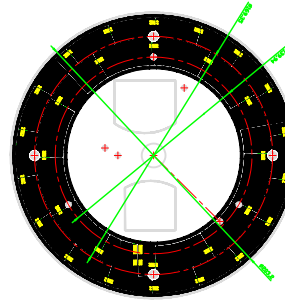
**LED Quick Kit  
 Q KIT**



QF2700/30-10C-120-TD  
 QF2700/40-10C-120-TD

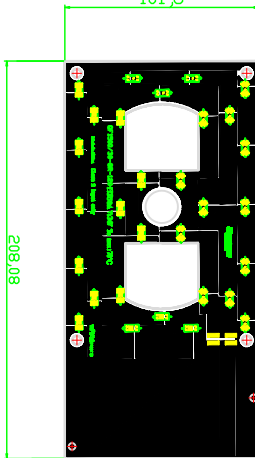
**Dimensions of Board**  
 Diameter 254mm (10")  
 Thickness 2mm (0.08")

101,6



QF1500/30-8C-120-TD  
 QF1500/40-8C-120-TD

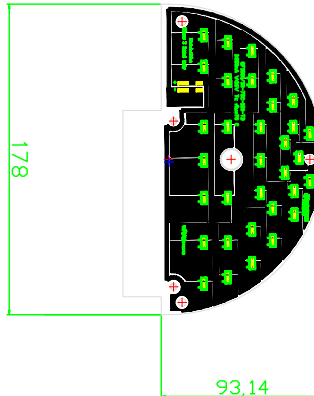
**Dimensions of Board**  
 Diameter 203mm (8")  
 Thickness 2mm (0.08")



QF1500/30-8R-120-TD  
 QF1500/40-8R-120-TD

**Dimensions of Board**  
 208mm(L) x 101mm(W) x 2mm(Thickness)  
 8.4"(L) x 4"(W) x 0.08"(Thickness)

208,08



QF1500/30-7SC-120-TD  
 QF1500/40-7SC-120-TD

**Dimensions of Board**  
 178mm(L) x 93mm(W) x 2mm(Thickness)  
 7"(L) x 3.6"(W) x 0.08"(Thickness)

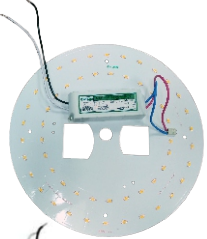







178

93,14





**ORDERING CODE, ENERGY AND PERFORMANCE DATA**

	Model No.	Delivered Lumens (lm)	Input Watts (W)	Voltage (V)	Colour Temp. (K)	Certification	Type
	<b>QF2700/30-10C-120-TD</b>	2503	20	120	3000K		Standard
	<b>QF2700/40-10C-120-TD</b>	2600	20	120	4000K		Standard
	<b>QF1500/30-8C-120-TD</b>	1502	12	120	3000K		Standard
	<b>QF1500/40-8C-120-TD</b>	1560	12	120	4000K		Standard
	<b>QF1500/30-8R-120-TD</b>	1502	12	120	3000K		Standard
	<b>QF1500/40-8R-120-TD</b>	1560	12	120	4000K		Standard
	<b>QF1500/30-7SC-120-TD</b>	1627	13	120	3000K		Standard
	<b>QF1500/40-7SC-120-TD</b>	1690	13	120	4000K		Standard

**NOTE:**  
Lumens are estimated

