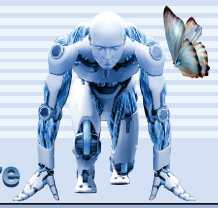


**SUBJECT SPECIFICATION SHEET  
STREAM FLOW  
LINEAR STRIP II**

**CUSTOMER PROJECT**

Project: \_\_\_\_\_  
 Type: \_\_\_\_\_  
 Cat. No.: \_\_\_\_\_  
 Qty: \_\_\_\_\_  
 Date: \_\_\_\_\_  
 EEL Rep: \_\_\_\_\_



**solutions closer to nature**

Telephone: 905 415 8878 Fax Number: 905 415 8872 Toll Free Telephone: 855 415 8878 Toll Free Fax: 855 415 8872

**PRODUCT DESCRIPTION**

The LED Stream Flow II family delivers superior quality, increased light efficacy and light output for a greater range of applications. The Stream Flow II reduces energy consumption for its standard equivalent of up to 60%, in addition to providing exceptional ergonomic and user comfort. The newer, improved design incorporates easy installation, with no need to open the unit to install. This fixture has a modern aesthetic design and the structural integrity for a wide range of applications. Suitable for damp locations.

**LED  
STREAM FLOW  
LINEAR STRIP II**



**SPECIFICATION FEATURES**

**Construction**

Pure light-weight aluminum shell housing; high light reflectivity PC reflectors. J-Box Cover Plate and J-Box adaptor included.

**Electrical**

LED standard is 4000K, optional as 3500K or 5000K, with a typical CRI: >80 >130LPW. 0-10V Dimmable  
 Electronic Drivers available in 100-347 Volt  
 L70 > 240,000h  
 L<sub>36000</sub> = 94.9%

**Mounting**

Chain Mounting : V hooks included: 1 pair for 4FT & 2 pairs for 8 FT  
 Surface Mounting: No need to remove the lens for installation. Mounting brackets are supplied and a junction box adaptor (2 piece cover plate) should be used.

**Finish**  
White

**Beam Angle**  
120° degrees standard

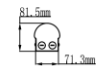
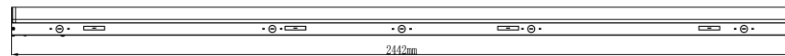
**Compliance**  
cULus, IP20, DLC

**Warranty**  
5 years

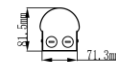
**This Fixture is not intended for continuous row mounting**



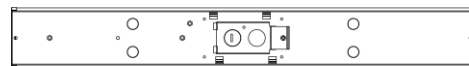
**SF-II-8  
Dimensions**  
mm | 2438(L) x 71.3(W) x 81.5(D)  
inch | 96(L) x 2.8(W) x 3.2(D)



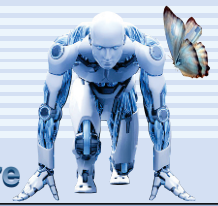
**SF-II-4  
Dimensions**  
mm | 1221(L) x 71.3(W) x 81.5(D)  
inch | 48(L) x 2.8(W) x 3.2(D)








**SF-II-2  
Dimensions**  
mm | 612(L) x 71.3(W) x 81.5(H)  
inch | 24(L) x 2.8 (W) x 3.2 (H)



[www.eelighting.com](http://www.eelighting.com)



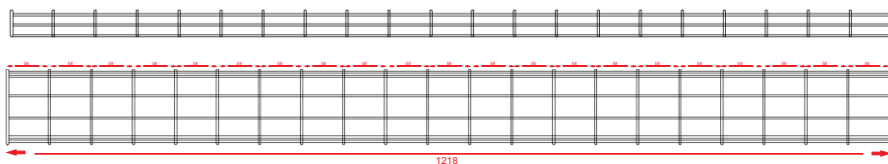
**ORDERING CODE, ENERGY AND PERFORMANCE DATA**

Model No.	Delivered Lumens (lm)	Input Watts (W)	Voltage (V)	Colour Temp. (K)	Efficacy (lm/W)	Certification	Type
 SF-II-8-80W35K-MV SF-II-8-80W40K-MV SF-II-8-80W50K-MV 8ft	11854 11976 12063	81 80 79	100-347 100-347 100-347	3500K 4000K 5000K	147 150 152		Standard
 SF-II-8-64W40K-MV SF-II-8-64W50K-MV 8ft	8603 8840	64 64	100-347 100-347	4000K 5000K	134 137		Standard
 SF-II-4-40W35K-MV SF-II-4-40W40K-MV SF-II-4-40W50K-MV 4ft	4859 4927 5063	37 37 37	100-347 100-347 100-347	3500K 4000K 5000K	131 133 136		Standard
 SF-II-4-32W40K-MV SF-II-4-32W50K-MV 4ft	4179 4306	31 31	100-347 100-347	4000K 5000K	134 138		Standard
 SF-II-2-20W40K-MV SF-II-2-20W50K-MV 2ft	2640 2705	20 20	100-347 100-347	4000K 5000K	132 134		Standard

**NOTE:**  
 • Lumens are estimated  
 • DLC qualified may not apply to all versions within a model. Please check the DLC Qualified Products List at [www.designlights.org](http://www.designlights.org) to confirm which versions are qualified

**OPTIONAL ACCESSORIES**

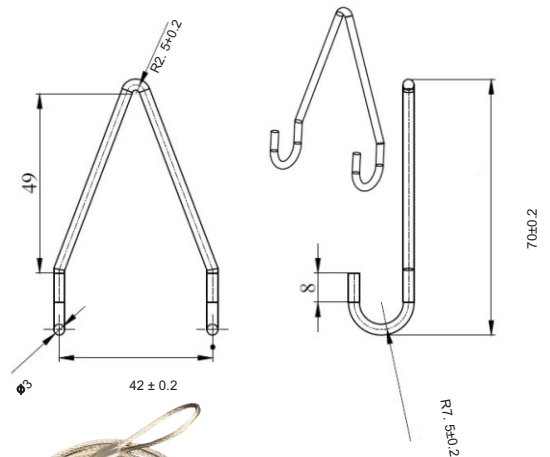
- SF-II-4-AC | Air Craft Cable and Vhook for SF-II 4ft (Max Length: 4' 2", Min Length: 2')
- SF-II-8-AC | Air Craft Cable and Vhook for SF-II 8ft (Max Length: 4' 2", Min Length: 2')
- SF-II-J-BOX ADAPTOR | J-Box Adaptor for SF-II
- DISCONNECT2P | UL and CSA listed, Luminaire disconnect, 2-pole, 6A, 600V
- ULT-HC419S & SFSBC | On-Off Sensor Control 120-277V & Sensor Bracket Cover
- ULT-HC419V & SFSBC | Tri-level Dimming Control 120-277V & Sensor Bracket Cover
- YM2502 | High Bay Occupancy Sensor 120-277V/347V
- FS-WG | 4ft Wire Guard



FS-WG



SF-II with FS-WG Installed



SF-II-4-AC | Air Craft Cable and Vhook for SF-II 4ft  
 SF-II-8-AC | Air Craft Cable and Vhook for SF-II 8ft



Please allow for tolerance on specifications and dimensions.  
 If required, please consult EEL.