

SPECIFICATION SHEET

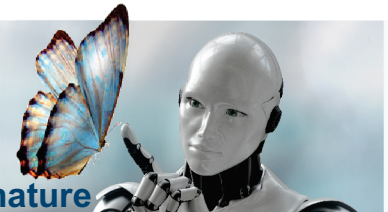
SUBJECT

LED ULTRATHIN GIMBAL

CUSTOMER PROJECT

Project: _____
 Type: _____
 Cat. No.: _____

 Qty: _____
 Date: _____
 EEL Rep: _____



solutions closer to nature

Telephone: 905 415 8878 Fax Number: 905 415 8872 Toll Free Telephone: 855 415 8878 Toll Free Fax: 855 415 8872

DESCRIPTION

The UltraThin 4" Recessed adjustable Gimbal is the perfect solution for slope ceilings and wall washing applications that features a 15 degree tilt. The recessed LED slim luminaire is dimmable, Non-IC, damp location and Energy Star approved. For Indoor use only.



**ULTRATHIN
GIMBAL
4" LED RECESSED
LUMINAIRE**

SPECIFICATION FEATURES

Construction

Round 4" fixture with integral LEDs
15 degrees tilt

Controls

Isolated driver factory installed inside connection box

Electrical

Ambient temperature -40°C to 40°C. CRI:80.
120V dimmable / 277-347V non-dimmable
9 Watt equivalent to 50 Watt halogen
12 Watt equivalent to 65 Watt halogen

Mounting

Cut hole in ceiling and snap fixture in opening with attached spring clips. Clearance needed - 2" (50mm)

Beam Angle

120°

Finish

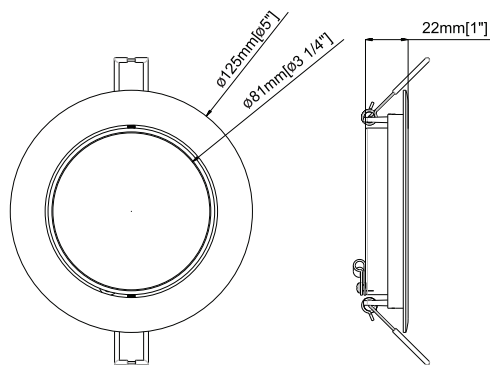
White (Optional Brushed Nickel and Black)

Compliance

CETL and Energy Star

Warranty

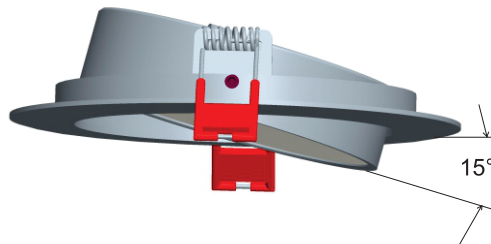
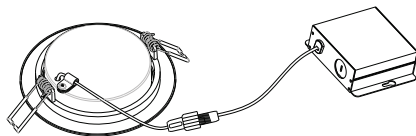
5 years, 50,000+ hours



UTLED-S9W-3KWH-G / UTLED-S9W-4KWH-G
UTLED-S12W-3KWH-G / UTLED-S12W-4KWH-G





Dimensions

OD 4-15/16" (125mm) x ID 3-15/16" (100mm)
Cut out 4-1/8" ($\pm 1/8"$) (105 \pm 3mm)
Thickness 1" (22mm)





ORDERING CODE, ENERGY AND PERFORMANCE DATA

	Model No.	Delivered Lumens (lm)	Input Watts (W)	Voltage (V)	Colour Temp. (K)	Certification	Type
	UTLED-S9W-3KWH-G	550	9	120V / 277-347V	3000K		Standard
	UTLED-S9W-4KWH-G White	600	9	120V / 277-347V	4000K		Standard
	UTLED-S12W-3KWH-G	700	12	120V / 277-347V	3000K		Special Order
	UTLED-S12W-4KWH-G White	800	12	120V / 277-347V	4000K		Special Order

- NOTE:**
- 120V dimmable / 277-347V non-dimmable
 - Lumens are estimated
 - Energy Star certification applies to 120V only

OPTIONAL ACCESSORIES

- UTLED-G-4-ICCAN | IC Rated Can for 4" UltraThin Gimbal
- UTLED-4-MP | Mounting Plate for 4" UltraThin models
- UTLED-JC-10 | Extension Cable 10ft for UltraThin models
- UTLED-JC-20 | Extension Cable 20ft for UltraThin models

SHIPPING DATA

Model No.	Gross Weight
UTLED-S9W-3KWH-G	0.42 kg / 0.92 lbs
UTLED-S9W-4KWH-G	0.42 kg / 0.92 lbs
UTLED-S12W-3KWH-G	0.42 kg / 0.92 lbs
UTLED-S12W-4KWH-G	0.42 kg / 0.92 lbs



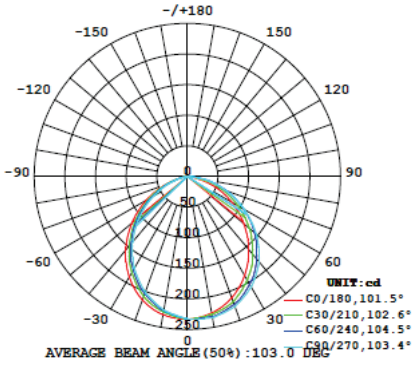


...continued

solutions closer to nature

Telephone: 905 415 8878 Fax Number: 905 415 8872 Toll Free Telephone: 855 415 8878 Toll Free Fax: 855 415 8872

PHOTOMETRICS



UTLED-S9W-3K

S/MH(C0/180) = 1.2
 S/MH(C90/270) = 1.32
 Lumens: 577.21
 Nominal Power: 9 W
 Efficacy: 70.5 lm/W

Candlepower

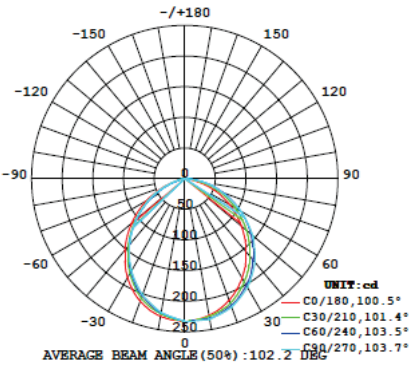
γ	C0	C45	C90	C135	C180	C225	C270	C315
5	230.9	232.2	233.5	234.1	234.1	234.2	234.2	234.2
10	226.5	229.6	231.3	232.9	233.1	233.4	233.7	233.7
15	219.9	227.0	230.3	232.7	232.5	232.4	231.9	231.9
20	211.0	219.5	226.2	232.9	231.7	205.6	201.6	202.4
25	199.8	211.0	217.3	234.7	203.5	193.5	187.6	190.0
30	186.7	199.7	208.5	203.5	189.9	178.9	173.6	175.4
35	171.8	186.3	196.3	189.4	174.3	162.5	156.5	159.0
40	155.5	172.2	182.2	173.9	156.9	145.3	139.4	142.0
45	138.2	155.2	164.6	154.4	139.2	126.7	120.7	123.0
50	120.1	138.2	147.0	134.8	118.4	108.2	102.0	104.1
55	101.6	119.9	127.0	112.9	98.05	88.36	82.76	84.53
60	82.93	101.8	107.0	91.72	77.46	69.08	63.54	65.42
65	64.26	82.85	86.23	70.50	56.92	50.14	44.91	46.28
70	45.34	64.45	65.48	48.00	37.33	32.18	26.28	28.11
75	25.24	46.37	47.19	25.94	19.11	15.32	13.14	11.06
80	7.476	25.65	28.91	9.822	0.7224	0.5187	0	0.474
85	0	5.428	0	0.0111	0	0	0	0

Zonal Lumen Summary

γ	Φ zone	Φ total	Φ lum. lamp
0- 5	5.533	5.533	0.96,0.96
5- 10	16.38	21.91	3.8,3.8
10- 15	26.61	48.51	8.4,8.4
15- 20	35.76	84.27	14.6,14.6
20- 25	43.32	127.6	22.1,22.1
25- 30	49.51	177.3	30.7,30.7
30- 35	53.57	230.9	40.40
35- 40	55.46	286.3	49.6,49.6
40- 45	55.22	341.6	59.2,59.2
45- 50	52.92	394.4	68.3,68.3
50- 55	48.51	442.9	76.7,76.7
55- 60	42.51	485.4	84.1,84.1
60- 65	35.18	520.6	90.2,90.2
65- 70	26.79	547.4	94.8,94.8
70- 75	17.97	565.3	97.9,97.9
75- 80	9.412	574.7	99.6,99.6
80- 85	2.515	577.2	100,100
85- 90	0.0217	577.2	100,100

Coefficient of Utilization

ρcc	80%			70%			50%			30%			10%			0
	50%	30%	10%	50%	30%	10%	50%	30%	10%	50%	30%	10%	50%	30%	10%	
ρfc	20%			20%			20%			20%			20%			0
RCR	RCR:Room Cavity Ratio						Coefficients of Utilization (CU)									
0.0	1.19	1.19	1.19	1.16	1.16	1.16	1.11	1.11	1.11	1.06	1.06	1.06	1.02	1.02	1.02	1.00
1.0	1.06	1.02	.98	1.03	.00	.97	.99	.96	.94	.95	.92	.91	.92	.90	.88	.86
2.0	.93	.87	.81	.91	.85	.80	.88	.83	.78	.84	.80	.77	.81	.78	.75	.73
3.0	.82	.74	.68	.81	.73	.68	.78	.72	.66	.75	.70	.65	.72	.68	.64	.62
4.0	.73	.65	.58	.72	.64	.58	.69	.63	.57	.67	.61	.56	.65	.60	.56	.54
5.0	.66	.57	.51	.64	.56	.50	.62	.55	.50	.60	.54	.49	.59	.53	.49	.47
6.0	.59	.51	.44	.58	.50	.44	.56	.49	.44	.55	.48	.43	.53	.47	.43	.41
7.0	.54	.45	.39	.53	.45	.39	.51	.44	.39	.50	.43	.39	.49	.43	.38	.36
8.0	.49	.41	.35	.48	.41	.35	.47	.40	.35	.46	.39	.35	.45	.39	.34	.33
9.0	.45	.37	.32	.45	.37	.32	.43	.36	.32	.42	.36	.31	.41	.36	.31	.29
10.0	.42	.34	.29	.41	.34	.29	.40	.33	.29	.39	.33	.29	.38	.33	.28	.27



UTLED-S9W-4K

S/MH(C0/180) = 1.20
 S/MH(C90/270) = 1.30
 Lumens: 571.29
 Nominal Power: 9 W
 Efficacy: 70.59 lm/W

Candlepower

γ	C0	C45	C90	C135	C180	C225	C270	C315
5	230.7	231.7	232.6	232.1	231.4	228.2	227.1	227.8
10	226.6	229.8	232.9	230.7	228.1	223.0	221.8	222.0
15	220.1	226.1	228.2	227.3	222.0	215.9	211.9	214.4
20	211.2	219.3	223.4	219.9	213.0	204.9	202.1	203.1
25	200.1	209.5	214.1	211.1	201.2	192.4	189.2	190.9
30	187.1	198.1	204.8	199.3	186.8	177.1	174.3	176.8
35	172.2	184.7	191.6	185.1	170.4	159.8	157.4	160.5
40	156.0	170.6	178.4	169.8	152.4	142.0	140.6	144.0
45	138.7	159.7	161.3	150.9	133.3	122.6	122.1	125.7
50	120.7	146.9	144.7	131.5	119.3	103.6	104.6	107.6
55	102.3	119.7	124.9	109.6	92.88	83.39	84.79	89.97
60	83.71	100.9	105.2	88.35	72.28	62.49	65.92	70.76
65	65.33	82.15	84.35	67.19	51.85	43.42	47.03	52.62
70	46.25	63.88	63.59	45.79	32.14	24.32	28.13	35.46
75	25.88	46.08	46.35	24.50	13.77	6.432	14.06	19.35
80	10.28	26.20	29.18	8.452	0.0000	1.537	0	6.809
85	0	5.904	0	0	0	0	0	0
90	0	0	0	0	0	0	0	0

Zonal Lumen Summary

γ	Φ zone	Φ total	Φ lum. lamp
0- 5	5.522	5.522	0.97,0.97
5- 10	16.34	21.86	3.83,3.83
10- 15	26.32	48.38	8.47,8.47
15- 20	35.61	83.99	14.7,14.7
20- 25	43.28	127.3	22.9,22.9
25- 30	49.15	176.4	30.9,30.9
30- 35	53.09	229.5	40.2,40.2
35- 40	54.89	284.4	49.8,49.8
40- 45	54.62	339.0	59.2,59.2
45- 50	52.24	391.3	68.5,68.5
50- 55	47.98	439.2	76.9,76.9
55- 60	42.02	481.3	84.2,84.2
60- 65	34.71	516.0	90.2,90.2
65- 70	26.30	542.3	94.9,94.9
70- 75	17.37	559.6	98.98
75- 80	9.089	569.7	99.6,99.6
80- 85	2.533	571.3	100,100
85- 90	0.0228	571.3	100,100

Coefficient of Utilization

ρcc	80%			70%			50%			30%			10%			0
	50%	30%	10%	50%	30%	10%	50%	30%	10%	50%	30%	10%	50%	30%	10%	
ρfc	20%			20%			20%			20%			20%			0
RCR	RCR:Room Cavity Ratio						Coefficients of Utilization (CU)									
0.0	1.19	1.19	1.19	1.16	1.16	1.16	1.11	1.11	1.11	1.06	1.06	1.06	1.02	1.02	1.02	1.00
1.0	1.06	1.02	.98	1.03	.00	.97	.99	.96	.94	.95	.92	.91	.92	.90	.88	.86
2.0	.93	.87	.81	.91	.85	.80	.88	.83	.78	.84	.80	.77	.81	.78	.75	.73
3.0	.82	.75	.68	.81	.74	.68	.78	.72	.67	.75	.70	.65	.72	.68	.64	.62
4.0	.73	.65	.58	.72	.64	.58	.69	.63	.57	.67	.61	.56	.65	.60	.56	.54
5.0	.66	.57	.51	.64	.56	.50	.62	.55	.50	.60	.54	.49	.59	.53	.49	.47
6.0	.59	.51	.44	.58	.50	.44	.57	.49	.44	.55	.48	.43	.53	.48	.43	.41
7.0	.54	.45	.39	.53	.45	.39	.52	.44	.39	.50	.44	.39	.49	.43	.38	.37
8.0	.49	.41	.35	.49	.41	.35	.47	.40	.35	.46	.40	.35	.45	.39	.35	.33
9.0	.45	.37	.32	.45	.37	.32	.44	.37	.32	.42	.36	.31	.41	.36	.31	.30
10.0	.42	.34	.29	.41	.34	.29	.40	.33	.29	.39	.33	.29	.38	.33	.29	.27



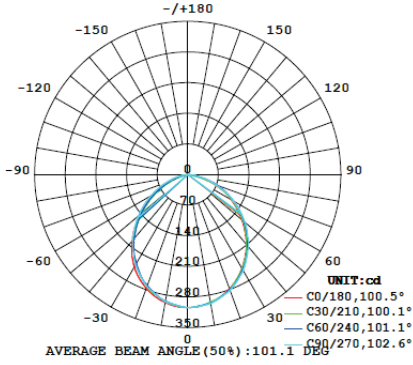


...continued

solutions closer to nature

Telephone: 905 415 8878 Fax Number: 905 415 8872 Toll Free Telephone: 855 415 8878 Toll Free Fax: 855 415 8872

PHOTOMETRICS



UTLED-S12W-3K

S/MH(C0/180) = 1.21
 S/MH(C90/270) = 1.24
 Lumens: 739.38
 Nominal Power: 12 W
 Efficacy: 67.11 lm/W

Candlepower

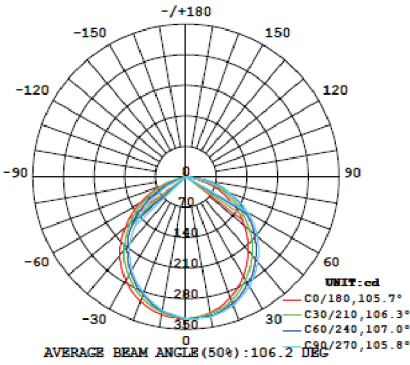
γ	C0	C45	C90	C135	C180	C225	C270	C315
5	302.6	301.7	301.9	301.9	302.7	300.1	295.9	300.5
10	297.5	297.3	299.4	298.0	297.4	293.8	295.3	295.3
15	289.4	290.7	290.7	291.8	288.8	284.9	284.1	287.9
20	278.2	279.1	282.1	280.6	277.2	270.7	273.0	275.1
25	264.1	266.2	267.7	268.6	262.6	255.0	256.1	261.4
30	247.5	250.0	253.4	253.1	244.8	236.0	239.1	244.4
35	228.4	231.4	234.2	234.7	222.7	214.1	217.5	224.9
40	207.4	211.9	215.1	215.1	198.2	191.0	194.0	204.9
45	184.9	189.2	192.8	190.4	172.0	165.0	171.7	181.6
50	161.5	166.8	170.6	164.7	144.4	139.1	147.4	158.8
55	137.7	142.9	145.4	134.2	116.3	111.7	122.4	134.6
60	113.8	119.3	120.2	104.5	88.09	85.05	97.51	111.1
65	89.78	94.48	93.85	75.38	60.37	59.16	73.73	87.33
70	62.08	67.77	67.50	47.01	33.95	34.91	49.94	64.60
75	31.26	38.34	44.45	19.14	10.43	12.64	30.69	42.90
80	5.674	13.29	21.40	5.751	0	3.656	11.44	19.61
85	0	0	0	0	0	0	2.342	0

Zonal Lumen Summary

γ	Φ zone	Φ total	lum, lamp
0- 5	7.233	7.233	0.98, 0.98
5- 10	21.38	28.61	3.87, 3.87
10- 15	34.68	63.29	8.56, 8.56
15- 20	46.53	109.8	14.9, 14.9
20- 25	56.56	166.4	22.5, 22.5
25- 30	64.28	230.7	31.2, 31.2
30- 35	69.44	300.1	40.6, 40.6
35- 40	71.74	371.8	50.3, 50.3
40- 45	71.28	443.1	59.9, 59.9
45- 50	68.05	511.2	69.1, 69.1
50- 55	62.31	573.5	77.6, 77.6
55- 60	54.35	627.8	84.9, 84.9
60- 65	44.67	672.5	91.91
65- 70	33.48	706.0	95.5, 95.5
70- 75	21.34	727.3	98.4, 98.4
75- 80	9.896	737.2	99.7, 99.7
80- 85	2.167	739.4	100, 100
85- 90	0.0162	739.4	100, 100

Coefficient of Utilization

ρcc	80%			70%			50%			30%			10%			0
	50%	30%	10%	50%	30%	10%	50%	30%	10%	50%	30%	10%	50%	30%	10%	0
ρfc	20%			20%			20%			20%			20%			0
RCR	RCR:Room Cavity Ratio															
0.0	1.19	1.19	1.19	1.16	1.16	1.16	1.11	1.11	1.11	1.06	1.06	1.06	1.02	1.02	1.02	1.00
1.0	1.06	1.02	.99	1.04	1.00	.97	.99	.97	.94	.96	.93	.91	.92	.90	.88	.86
2.0	.93	.87	.82	.91	.86	.81	.88	.83	.79	.85	.81	.77	.82	.78	.75	.73
3.0	.83	.75	.69	.81	.74	.68	.78	.72	.67	.75	.70	.66	.73	.68	.65	.63
4.0	.73	.65	.59	.72	.64	.58	.70	.63	.58	.67	.62	.57	.65	.60	.56	.54
5.0	.66	.57	.51	.65	.57	.51	.63	.56	.50	.61	.55	.50	.59	.54	.49	.47
6.0	.60	.51	.45	.59	.51	.45	.57	.50	.44	.55	.49	.44	.54	.48	.43	.41
7.0	.54	.46	.40	.53	.45	.40	.52	.45	.39	.50	.44	.39	.49	.43	.39	.37
8.0	.50	.41	.36	.49	.41	.35	.48	.40	.35	.46	.40	.35	.45	.39	.35	.33
9.0	.46	.38	.32	.45	.37	.32	.44	.37	.32	.43	.36	.32	.42	.36	.32	.30
10.0	.42	.34	.29	.42	.34	.29	.41	.34	.29	.40	.33	.29	.39	.33	.29	.27



UTLED-S12W-4K

S/MH(C0/180) = 1.21
 S/MH(C90/270) = 1.31
 Lumens: 821.53
 Nominal Power: 12 W
 Efficacy: 74.26 lm/W

Candlepower

γ	C0	C45	C90	C135	C180	C225	C270	C315
5	322.7	324.4	326.2	326.0	325.0	320.3	318.3	318.8
10	316.6	321.8	326.9	324.7	321.2	313.5	311.0	310.6
15	307.3	316.1	320.6	320.8	313.9	304.2	297.7	299.9
20	295.1	305.4	314.4	311.7	303.7	290.3	284.4	284.7
25	280.1	293.5	302.3	301.4	290.7	275.3	266.2	268.3
30	262.8	278.3	290.1	287.6	275.0	257.3	248.0	249.3
35	243.3	260.7	272.8	271.0	256.1	237.1	229.6	229.0
40	221.9	242.1	258.5	254.4	234.0	215.7	199.3	205.1
45	199.0	219.5	234.2	231.5	209.3	190.1	168.3	175.0
50	174.9	197.7	213.1	208.4	181.9	162.8	137.4	146.6
55	149.6	172.9	188.4	178.0	152.8	132.1	102.4	113.6
60	123.5	148.3	163.7	147.2	121.9	101.0	67.38	81.00
65	97.04	121.9	133.2	113.8	90.51	68.01	35.05	48.25
70	69.89	95.66	102.8	76.81	59.34	37.76	2.759	21.72
75	38.98	69.89	70.45	37.88	29.66	10.95	1.294	2.162
80	14.65	41.39	38.10	13.99	3.608	3.080	0	0
85	0	9.920	0	0.4889	0	0	0	0
90	0	0	0	0	0	0	0	0

Zonal Lumen Summary

γ	Φ zone	Φ total	lum, lamp
0- 5	7.741	7.741	0.94, 0.94
5- 10	22.91	30.65	3.73, 3.73
10- 15	37.23	67.88	8.26, 8.26
15- 20	50.10	118.0	14.4, 14.4
20- 25	61.16	179.1	21.8, 21.8
25- 30	69.92	249.1	30.3, 30.3
30- 35	76.19	325.3	39.6, 39.6
35- 40	79.53	404.8	49.3, 49.3
40- 45	79.86	489.6	59.59
45- 50	76.95	561.6	68.4, 68.4
50- 55	70.94	622.5	77.77
55- 60	61.90	694.4	84.5, 84.5
60- 65	50.43	744.9	90.7, 90.7
65- 70	37.07	781.9	95.2, 95.2
70- 75	23.50	805.4	98.98
75- 80	12.40	817.8	99.5, 99.5
80- 85	3.651	821.5	100, 100
85- 90	0.0590	821.5	100, 100

Coefficient of Utilization

ρcc	80%			70%			50%			30%			10%			0
	50%	30%	10%	50%	30%	10%	50%	30%	10%	50%	30%	10%	50%	30%	10%	0
ρfc	20%			20%			20%			20%			20%			0
RCR	RCR:Room Cavity Ratio															
0.0	1.19	1.19	1.19	1.16	1.16	1.16	1.11	1.11	1.11	1.06	1.06	1.06	1.02	1.02	1.02	1.00
1.0	1.06	1.02	.98	1.03	1.00	.97	.99	.96	.94	.95	.93	.91	.92	.90	.88	.86
2.0	.93	.87	.81	.91	.85	.80	.88	.83	.79	.84	.80	.77	.81	.78	.75	.73
3.0	.82	.74	.68	.81	.73	.68	.78	.72	.67	.75	.70	.66	.72	.68	.64	.62
4.0	.73	.65	.58	.72	.64	.58	.69	.63	.57	.67	.61	.56	.65	.60	.56	.54
5.0	.65	.57	.50	.64	.56	.50	.62	.55	.50	.60	.54	.49	.59	.53	.49	.47
6.0	.59	.50	.44	.58	.50	.44	.56	.49	.44	.55	.48	.43	.53	.47	.43	.41
7.0	.54	.45	.39	.53	.45	.39	.51	.44	.39	.50	.43	.38	.49	.43	.38	.36
8.0	.49	.41	.35	.48	.40	.35	.47	.40	.35	.46	.39	.35	.45	.39	.34	.32
9.0	.45	.37	.32	.44	.37	.32	.43	.36	.31	.42	.36	.31	.42	.36	.31	.29
10.0	.42	.34	.29	.41	.34	.29	.40	.33	.28	.39	.33	.28	.38	.32	.28	.27

