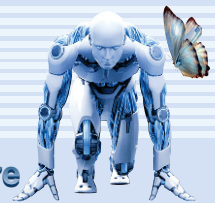


CUSTOMER PROJECT

Project: \_\_\_\_\_  
 Type: \_\_\_\_\_  
 Cat. No.: \_\_\_\_\_  
 Qty: \_\_\_\_\_  
 Date: \_\_\_\_\_  
 EEL Rep: \_\_\_\_\_



solutions closer to nature

Telephone: 905 415 8878 Fax Number: 905 415 8872 Toll Free Telephone: 855 415 8878 Toll Free Fax: 855 415 8872



**LED  
 VAPOUR TIGHT  
 LUMINAIRE  
 (New Style "B")  
 (IP67 NEMA 4X / NEMA 6)**

**VAPOUR TIGHT  
 IP67 / NEMA 4X / NEMA 6**

**PRODUCT DESCRIPTION**

The Vapour Tight NEMA 4X / NEMA 6 rated fixture with new design has the same dependable quality as the existing Vapor Tight. The PC/UV unbreakable lens has the futuristic etched design, providing a brighter light output. This new design is made with light weight aluminum board, enhanced heat resistant casing and tough stainless steel clips. It is IP67 and NEMA 4X / NEMA 6 rated and is suitable for wet locations.

**SPECIFICATION FEATURES**

**Construction**

Polycarbonate housing with frosted etched polycarbonate lens and stainless steel clips  
 Tough 5VA rated fire resistant plastic  
 60 seconds burn stop with no drip or hole exposure  
 Optimum heat transfer aluminum module board  
 V-hooks included

**Mounting**

Surface Mount  
 Suspension Mount

**Electrical**

Long Life LED System complete with 0-10V dimmable electrical driver to deliver the optimal performance  
 LED's available in 4000K and 5000K with a typical CRI: 80  
 Ambient temperature -40°C to 40°C  
 Long Life LG LED modules rated for 180,000 hours at 85°C  
 Suitable for wet locations  
 Electronic drivers are available in 120-347 Volt application

**Finish**

Finish polycarbonate housing. Gray finish.

**Shielding**

Frosted etched lens

**Compliance**

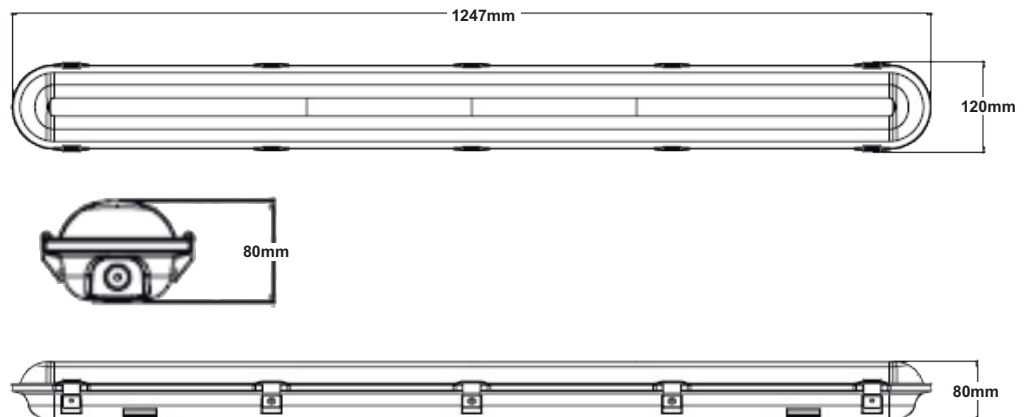
Modules and Drivers are UL recognized components and luminaire is cULus / DLC listed. 5VA, NEMA 4X / NEMA 6 and IP67 rated

**Warranty**

5 years

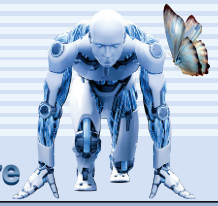
**Driver and Module Access**

Drivers can be accessed by snapping out the module plate





VT54LED04(P) "B" 4N  
 VT54LED04(P) "B" 5N  
**Dimensions**  
 mm | 1247(L) x 120(W) x 80(D)  
 inch | 49.1(L) x 4.7(W) x 3.1(D)





**ORDERING CODE, ENERGY AND PERFORMANCE DATA**

	Model No.	Delivered Lumens (lm)	Input Watts (W)	Voltage (V)	Colour Temp. (K)	Efficacy (lm/W)	Certification	Type
	VT54LED04(P) "B" 4N	6660	56	120-347	4000K	116	 <b>NEMA 4X /</b> <b>NEMA 6</b>	Standard
	VT54LED04(P) "B" 5N	7171	56	120-347	5000K	129		

**NOTE:**

- Lumens are estimated
- DLC qualified may not apply to all versions within a model. Please check the DLC Qualified Products List at [www.designlights.org](http://www.designlights.org) to confirm which versions are qualified.

**CONTROLS (OPTIONAL)**

BR1810-B-D | ON/OFF DIM Microwave Sensor 120-277  
 BR1820 | Bi-level Detached Microwave Sensor 0-10V DIM, 100-347VAC  
 YM2502 | High Bay Occupancy Sensor 120-277V/347V

**EMERGENCY BACK-UP (OPTIONAL)**

EMAC1500S60D64 | LED Emergency Driver 120-277V DIM  
 EMLEDS10155564 | LED Emergency Battery Pack 120-277V

