

## FEATURES & SPECIFICATIONS

**INTENDED USE** — The IBZ fluorescent high bay is ideal for new construction and renovation projects. It is a one-for-one replacement of common metal halide high bay systems. The unique Cool Running Plus™ technology provides industry-leading, trouble-free operation in ambient temperatures up to 155°F (68°C). Applications include manufacturing, warehousing, commercial and industrial facilities. The IBZ fixture performs well at mounting heights from 15'-40'. **Certain airborne contaminants can diminish integrity of acrylic. Click here for Acrylic Environmental Compatibility table for suitable uses.**

**CONSTRUCTION** — The highly configurable design of the IBZ high bay allows for a multitude of fixture options that can either be factory- or field-installed. The easy-access ballast channel houses the proprietary Cool Running Plus technology, which is the most advanced fluorescent ballast technology available for fluorescent high bay lighting. It has independent lamp operation to reduce lamp maintenance costs, is fast-starting to improve occupancy sensing, and a proprietary thermal-sensing processor that allows for reliable operation in environments where ambient temperatures can reach up to 155°F (68°C).

In addition to the reliable operation of IBZ fixtures, the reflectors tightly control the distribution of light and effectively manage lamp heat to increase the overall efficiency. The result is superior optics in either narrow distribution for aisles, or wide distribution for general lighting. Installation is made quick and easy with IBZ hanging accessories such as the aircraft cable and single-point mounting bracket. IBZ fixtures can be factory-wired to have both sensors and cord sets, further reducing installation time. The configurability, performance and ease of installation make IBZ fixtures the preferred choice for fluorescent high bay lighting.

Channel is formed of heavy-duty code-gauge (22-gauge) steel to stand up to the most demanding elements. Lamp holder assembly protects from incidental damage or movement of sockets during handling and installation. Sockets include secure positioning rotating collars with enclosed contacts. Access plate on the back of the channel housing allows quick and easy wiring.

Finish: Channel is high-gloss white baked enamel; five-stage iron phosphate pretreatment ensures superior paint adhesion and rust resistance.

**OPTICS** — Two optical systems are available. Narrow distribution is ideal for narrow or aisle lighting applications and features precision-formed segmented optics utilizing specular aluminum reflector. Provides 95% reflectivity and warranted for 25 years. Wide distribution includes high-reflectance white finish for general or open areas.

**ELECTRICAL** — Thermally protected, resetting, Class P, HPF, A sound-rated electronic ballast. AWM TFM or THHN wire used throughout rated for required temperatures. Ballast disconnect (BDP) is standard unless EL14 or cord set is requested.

**INSTALLATION** — Suitable for suspension by chain, cable, surface-mounting bracket, hook monopoint or single (pendant) monopoint. Surface mounting not recommended without optional surface mounting bracket. To maintain high ambient listing, fixture should be mounted at a minimum plenum height of 8".

**LISTINGS** — CSA Certified to U.S. and Canadian safety standards (UL1598 and CSA 250.0-08) for 55°C and 40°C lensed. Suitable for damp locations.

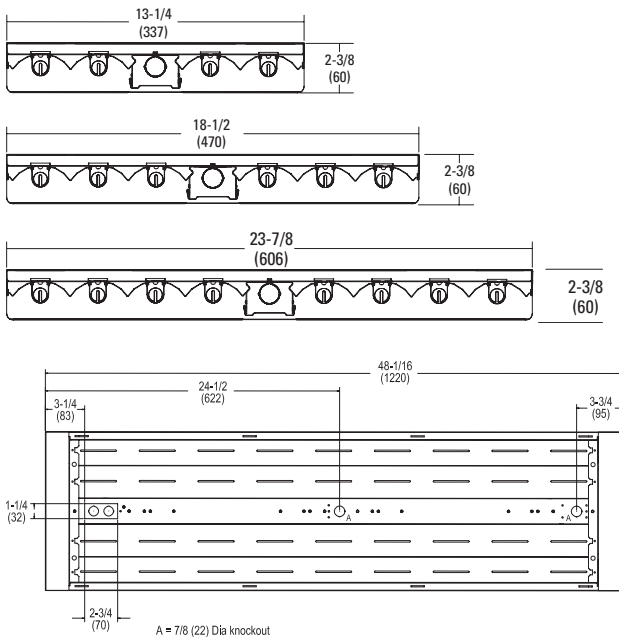
**WARRANTY** — 1-year limited warranty. Complete warranty terms located at [www.acuitybrands.com/CustomerResources/Terms\\_and\\_conditions.aspx](http://www.acuitybrands.com/CustomerResources/Terms_and_conditions.aspx)

Actual performance may differ as a result of end-user environment and application.

Note: Specifications subject to change without notice.

## DIMENSIONS

Dimensions may vary with options or accessories.



Catalog Number
Notes
Type



Fluorescent High Bay

# IBZ

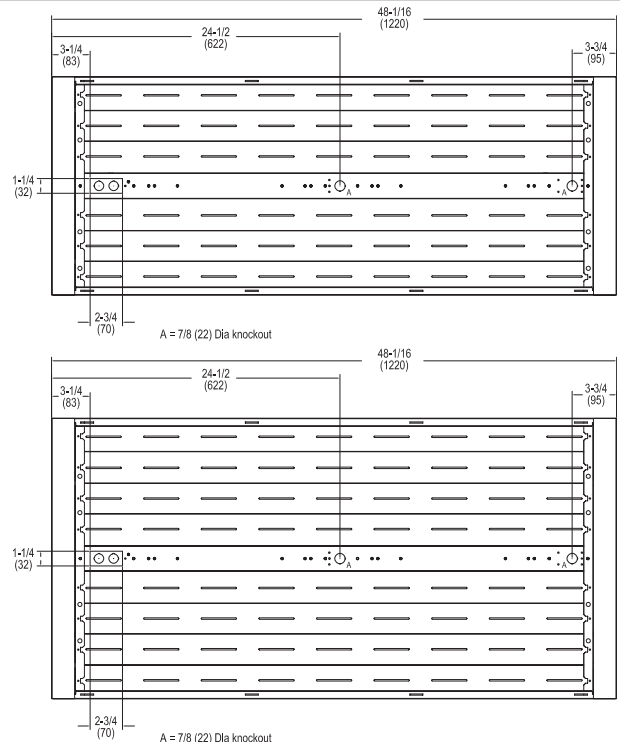
4-, 6- or 8-lamp T5HO

Patent Pending



SPECIFICATIONS				
	Length	Width	Depth	Weight
<b>4-lamp</b>	48-1/16 (1221)	13-1/4 (337)	2-3/8 (60)	16 lbs. (7.3 kg)
<b>6-lamp</b>	48-1/16 (1221)	18-1/8 (460)	2-3/8 (60)	20 lbs (9.1 kg)
<b>8-lamp</b>	48-1/16 (1221)	23-7/8 (606)	2-3/8 (60)	25 lbs. (11.3 kg)

All dimensions are inches (millimeters) unless otherwise specified and may vary with options or accessories.



# IBZ Fluorescent High Bay, T5H0

## ORDERING INFORMATION

For shortest lead times, configure products using **standard options (shown in bold)**.

**Example: IBZ 454L**

IBZ	Lamp type	Distribution	Shielding <sup>2,3</sup>	Voltage	Ballast configuration	Ballast
<b>IBZ</b> <i>For tandem double-length unit, add prefix "T". Ex: TIBZ</i>	<b>Lamps installed<sup>1</sup></b>	<b>(blank)</b> Narrow distribution, ≤5% uplight	<b>(blank)</b> No shielding	<b>(blank)</b> MVOLT; 120-277V	<b>(blank)</b> Standard configuration	<b>(blank)</b> Cool Running Plus T5 electronic, 1.0 BF, programmed rapid start
	<b>454L</b> 4-lamp 54W T5H0	NDU Narrow distribution, enhanced uplight, ≤13% uplight	A12125 Pattern 12 acrylic, 0.125" <sup>4</sup>	HVOLT 347V-480V <sup>5</sup>	4-lamp = (1) 4-lamp ballast 6-lamp = (1) 2-lamp and (1) 4-lamp ballast 8-lamp = (2) 4-lamp ballasts	<b>GEB10P590</b> T5 electronic, 1.0 BF, programmed rapid start
	<b>654L</b> 6-lamp 54W T5H0		ACL Clear acrylic, 0.125" <sup>4</sup>			
	<b>854L</b> 8-lamp 54W T5H0	PCL125 Clear polycarbonate, 0.125" <sup>4</sup>				
	<b>Unlamped</b>	<b>WD</b> Wide distribution, ≤5% uplight	NLWG No lens; wireguard in door frame			
	<b>454</b> 4-lamp 54W T5H0	WDU Wide distribution, enhanced uplight, ≤13% uplight				
<b>654</b> 6-lamp 54W T5H0						
<b>854</b> 8-lamp 54W T5H0						

Lamp color	Options
<b>(blank)</b> F54T5H0/841	GLR Internal fast-blow fuse <sup>7,8</sup>
LP835 F54T5H0/835	GMF Internal slow-blow fuse <sup>7,8</sup>
LP850 F54T5H0/850	EL14 Emergency battery pack <sup>7,9,10</sup>
<b>Amalgam lamps<sup>6</sup></b>	EL14SD Emergency battery pack w/ self-diagnostics <sup>7,9,10</sup>
LP841A F54T5H0/841	I162 1250 lumens per lamp battery <sup>9,10,11</sup>
LP835A F54T5H0/835	OUTCTR Wiring leads pulled through back center of fixture <sup>3</sup>
LP850A F54T5H0/850	OCS RELOC® OnePass® 5' installed <sup>7</sup>
<b>Energy-saving 49W lamps</b>	IMP Integrated modular plug <sup>12,23</sup>
P841E49 F54T5H0/841	FSP Integral full side panels
P835E49 F54T5H0/835	PBTSKT Polybutylene terephthalate sockets
P850E49 F54T5H0/850	HBBSIC Chain hanger (pair)
	HBBS36IC Chain hanger with 36" chain (pair)
	<b>Cord sets:</b>
	CS1W Straight plug, 120V <sup>13,14</sup>
	CS3W Twist-lock, 120V <sup>13,14</sup>
	CS7W Straight plug, 277V <sup>13,14</sup>
	CS11W Twist-lock, 277V <sup>13,14</sup>
	CS25W Twist-lock, 347V <sup>13,14</sup>
	CS97W Twist-lock, 480V <sup>13,14</sup>
	CS93W 600 SO white cord, no plug (no voltage required) <sup>13,14</sup>
	<b>Motion sensors:</b>
	MSI Aisle motion sensor, pre-wired <sup>15</sup>
	MSI360 360° motion sensor, pre-wired <sup>15</sup>
	MSE360 360° motion sensor, embedded <sup>7,16</sup>
	MSE360LB 360° motion sensor, embedded <sup>7,17</sup>
	XP1 XPoint single relay <sup>18</sup>
	XP2 XPoint double relay <sup>18</sup>
	<b>Wireguards:</b>
	WGX External wireguard installed
	2WGX External wireguard installed on bottom of fixture <sup>19</sup>

## Accessories: Order as separate catalog number.

Mounting:	Field-installable door and lens assemblies <sup>21,22</sup>	Cord sets and sensors for IMP option:	Wireguards:
IBAC120 M20 Aircraft cable 10' with hook (one pair)	DLIBZ14 A12125 4-lamp pattern 12 acrylic lens, 0.125" <sup>21,22</sup>	CS1WIMP Straight plug, 120V <sup>7,13,14</sup>	WGIBZ14 Standard 4-lamp wireguard
IBAC240 M20 Aircraft cable 20' with hook (one pair)	DLIBZ14 ACL 4-lamp clear acrylic lens <sup>21,22</sup>	CS3WIMP Twist-lock, 120V <sup>7,13,14</sup>	WGIBZ19 Standard 6-lamp wireguard
IBHMP Hook monopoint	DLIBZ14 PCL125 4-lamp clear polycarbonate lens, 0.125" <sup>21,22</sup>	CS7WIMP Straight plug, 277V <sup>7,13,14</sup>	WGIBZ24 Standard 8-lamp wireguard
IBZACVH Aircraft 10' V hanger (one pair)	DLIBZ19 A12125 6-lamp pattern 12 acrylic lens, 0.125" <sup>21,22</sup>	CS11WIMP Twist-lock, 277V <sup>7,13,14</sup>	
IBZTFC Tandem coupler and side panel	DLIBZ19 ACL 6-lamp clear acrylic lens <sup>21,22</sup>	CS25WIMP Twist-lock 347V	
IBZPMP Pendant monopoint splice box, includes side covers <sup>20</sup>	DLIBZ19 PCL125 6-lamp clear polycarbonate lens, 0.125" <sup>21,22</sup>	CS93WIMP 600V SO white cord, no plug (no voltage required) <sup>13</sup>	
IBZPMPHB Pendant monopoint splice box, includes side covers (3/4" hub) <sup>20</sup>	DLIBZ24 ACL 8-lamp clear acrylic lens <sup>21,22</sup>	CS97WIMP Twist-lock 480V	
HBBS36 Chain hanger, 36" (one pair)	DLIBZ24 PCL125 8-lamp clear polycarbonate lens, 0.125" <sup>21,22</sup>	MSIIMP Aisle sensor <sup>7,23</sup>	
IBZSMB Surface-mounting bracket (one pair)		MSI360IMP 360° sensor <sup>7,23</sup>	

## Notes

- Lamps installed are F54T5H0/841 unless otherwise specified.
- 5/55°F warranty with open fixtures only.
- Not available with MSE360 option.
- For wireguard in door frame, add "WG" to shielding. Ex: A12125WG.
- Nonstandard configurations may require factory installed BACKPACK™. Consult factory.
- Not for use with motion sensors.
- Specify voltage. Consult factory for Canadian applications.
- Not available with 347 voltage.
- Battery options require a BACKPACK™ installed by the factory in order to accommodate the size of the battery. The BACKPACK is NOT field installable. May only be surface mounted using IBZSMB. Not available with pendant mount using IBZ PMP or IBZ PMPHB. Not available with IMP.
- Certified to UL1598 (approx. 1100 lumens at 25°C when using 49W lamps, and 911 lumens at 45°C). Single-lamp operation only. 120 or 277 voltage only.
- Max 2500 lumens when used with 54W T5 lamps up to 55°C ambient temperature (120 or 277 voltage only).
- Must be factory-installed. Not available on TIBZ 16-lamp configurations.
- All cord sets are 18/3, 6', white.
- Cord sets are voltage specific. Other configurations available. Consult factory.
- Specify voltage; 120, 208, 240, 277, 347 or 480.
- Recommended for heights of 30-40'. Not available with lensed units. 120, 277 or 347 voltage only.
- Embedded sensor. For mounting heights up to 20', not available with lensed units. 120, 277 or 347 voltage only.
- Contact LC&D for additional system components required.
- One wireguard shipped as separate line item for top installation in field. Not available with IBZPMP.
- When ordering IBZPMP, two-ballast configurations are recommended. Ex: 2/2. Not available with tandem units. Not available with any battery pack.
- Not available with MSE360 or MSE360LB.
- Add WG to nomenclature if wire guard is to be installed in door frame, ex: DLIBZ14 A12125WG.
- Must have "IMP" power cord to power fixture.



IBZ\_X54