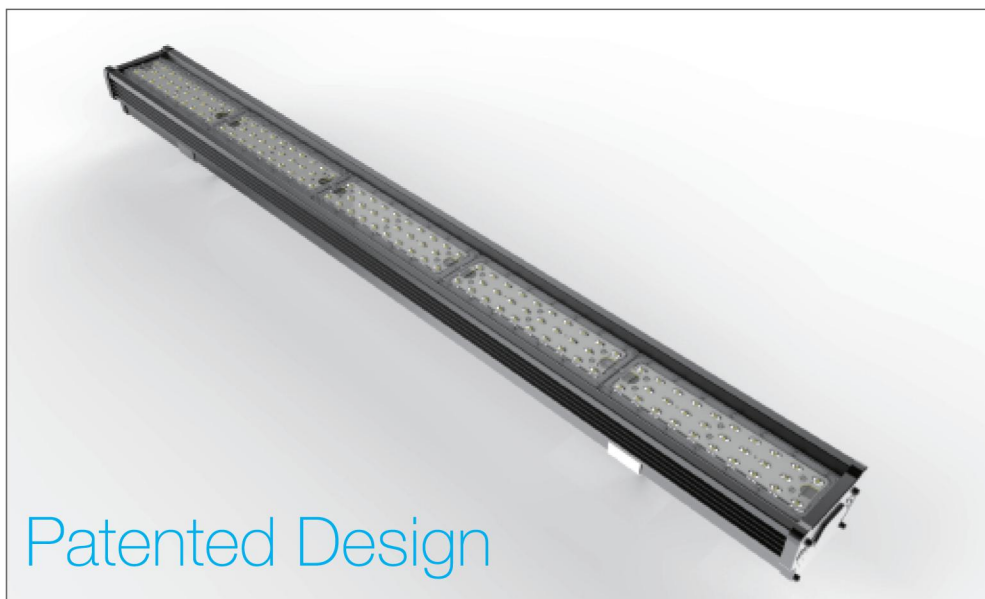
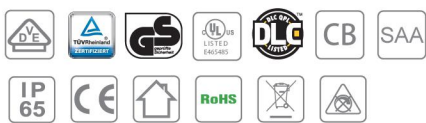
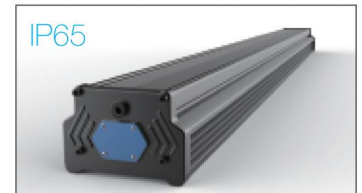
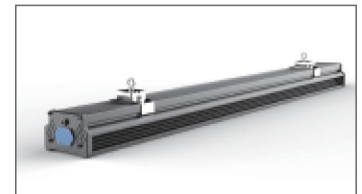




Linear LED High Bay SPEC HBLC



Series Products





Matters needing attention

- Before installing the lighting fixtures, please read this instruction manual carefully.
- The lighting fixtures should be installed, connected and tested by a certified installer based on the local regulations.
- Lamps should always be installed or replaced with care.
- Please check the local voltage in accordance with the product requirements before using the product.
- Relamping only can be done when the power is off and the lamp is completely cooled down.
- When a lamp is to be cleaned, make the power off and let it cool down completely. Clean the fixture with a soft cloth and a standard PH neutral detergent. Stainless steel finishing should be maintained regularly.
- Misuse of, or changes to the fixture shall nullify the guarantee.
- Don't cover the fixtures with flammable materials.
- Exclusively replaced by the manufacturer or his service agent or the similar qualified person in order to avoid a hazard.

S/N Rules

S/N:ABCDEFX

1 2 3 4 5 6

EX:HBLCK206511030000X

1 2 3 4 5 6

- 1 Model
- 2 PC Lens : K=Frosted T=Clear
- 3 Power : 20=20W 30=30W 40=40W 50=50W 65=65W
- 4 Color Range : 30=WW(3000K) 40=NW(4000K) 50=DW(5000K)
60=CW(6000K)
- 5 Date : 11=2011 Year 03=March
- 6 Quantity : 00001-99999PCS

Temperature Characteristics T-ambient 25°

Temperature

Operating -30~+55 °C
Storage -40~+85 °C

Electrical Characteristics

Input Voltage:

US: AC100~277V 50/60Hz
EU: AC100~240V 50/60Hz
PF: ≥0.93 THD<20%
Power Efficiency: ≥0.9



1. Features

- Linear LED High Bay patented design
- Modular design can meet the requirements of various projects
- Universal AC input 90-305VAC
- Hook mounting, suspension mounting, and fixed mounting for convenient installation and maintenance
- 30x70°/60x90°/90x150°beam angle with Lens
- Unique heatsink design for stable product performance
- Built-in active PFC function
- Patented design + Brand driver+ Brand LED
- Product automatic protection (OVP OLP OTP OCP)
- Water proof IP65 rate

2.Application

COMMERCIAL LIGHTING

Hospital
 Supermarkets
 Shopping mall
 School
 etc.

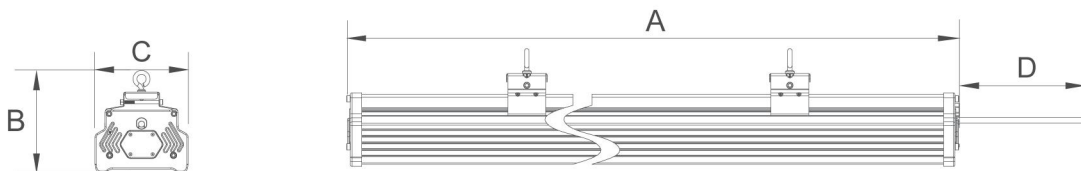
PUBLIC LIGHTING

Street
 Tunnel
 Airports
 Sports
 Train stations
 Bus stations
 Theatres
 MTR stations
 etc.

INDUSTRIAL LIGHTING

Manufacture
 Warehouses
 Park
 Exhibition centers
 Gas stations
 Toll stations
 Gymnasium
 etc.

3.Product Dimension



Model NO.	Size A(mm)	Size B(mm)	Size C(mm)	Size D(mm)
HBLC 600mm	600	155	142	1000
HBLC 900mm	900	155	142	1000
HBLC1200mm	1200	155	142	1000
HBLC 1500mm	1500	155	142	1000



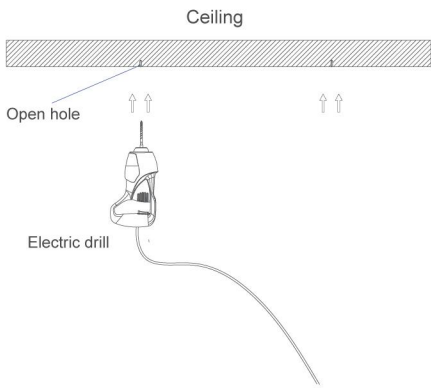
4. Parameter

Model NO.	Power (W)	Light Source	LED QTY (pcs)	CCT (K)	Clear Cover Lumens	Clear Cover Lm/W	CRI	Beam Angle	Recommended Installation Height (m)
HBLC-600mm	60	3030	48	4000K	7200	120	>70	30x70°/60x90°/90x150°	6-12
HBLC-900mm	90	3030	72	4000K	10800	120	>70	30x70°/60x90°/90x150°	6-12
HBLC-1200mm	120	3030	96	4000K	14400	120	>70	30x70°/60x90°/90x150°	6-12
HBLC-1500mm	150	3030	120	4000K	18000	120	>70	30x70°/60x90°/90x150°	6-12

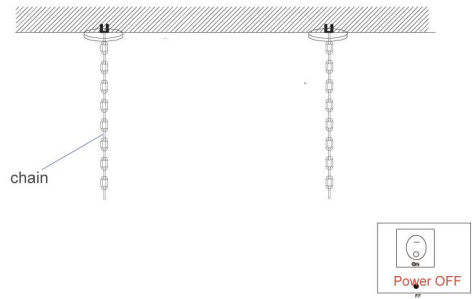
CCT Range WW(3000K) NW(4000K) DW(5000K) CW(6500K)

5. Installation

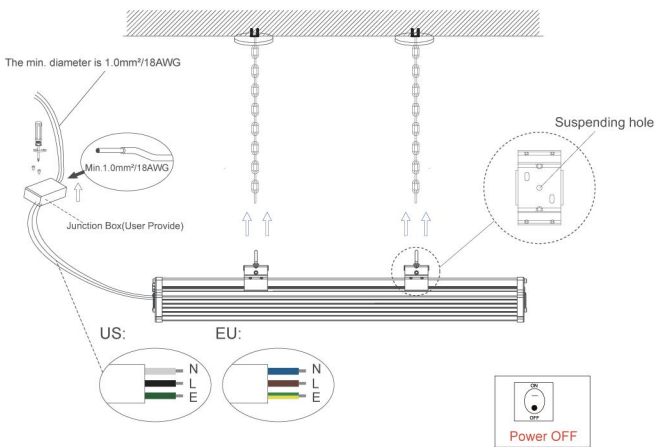
A. Suspending



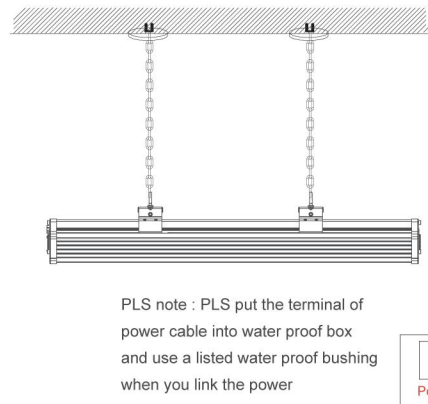
A : Make a right position and screw hole



B : Screw the steel cable onto the ceiling



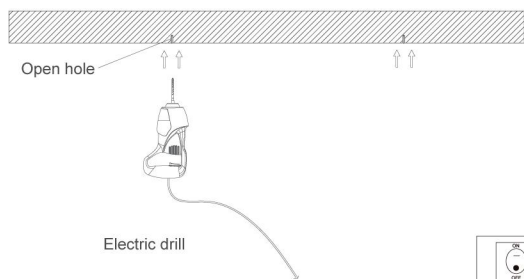
C : Hang the fixture under the steel cable and secure the fixture by steel cable



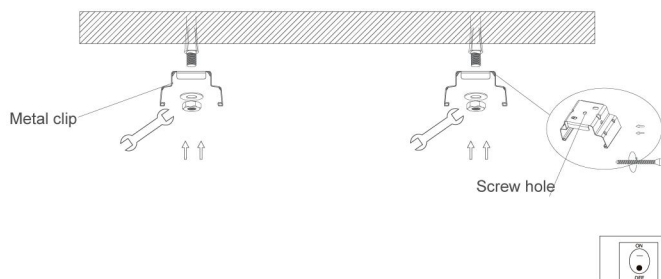
D: Adjust the position of the fixture and clean it..

PLS note : PLS put the terminal of power cable into water proof box and use a listed water proof bushing when you link the power

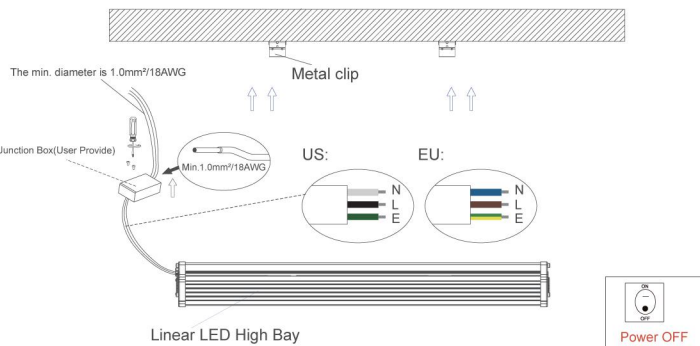
B. Ceiling Mounted



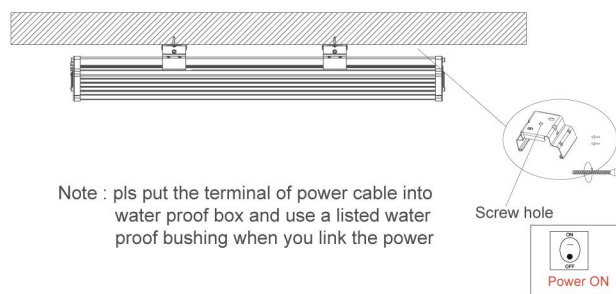
A: Make a right position and screw hole



B: Screw the clip on the ceiling tightly



C: Install the lamp into the clips.



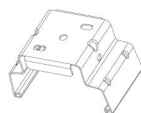
D: Adjust the position of the fixture and clean it..



The luminaires are intended for indoor use or under shelter for outdoor use.



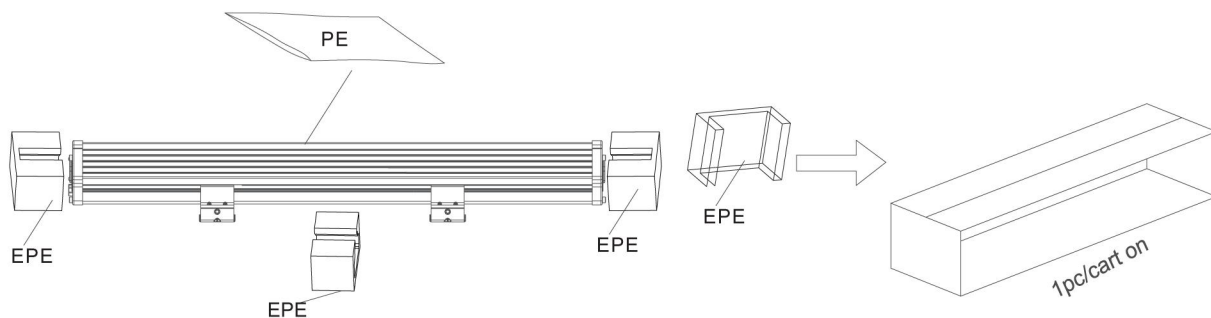
Loop
One package two pcs



Metal Card
One package two pcs

Standard accessories

6. Packaging



A. Pack list

Sequence Number	Model NO.	Quantity
1	Linear LED High Bay	1pc
2	Metal card buckle	2pcs
3	Manual	1pc

B.Packing Data

Model No	Single Box	Pcs/CTN	N .W. / pcs (kg)	G .W. /CTN (kg)	Meas (mm)
HBLC-600mm	1	1	4.22	4.80	770x198x155
HBLC-900mm	1	1	6.0	6.88	1058x198x155
HBLC-1200mm	1	1	7.36	8.36	1347x198x155
HBLC-1500mm	1	1	8.82	10.0	1637x198x155