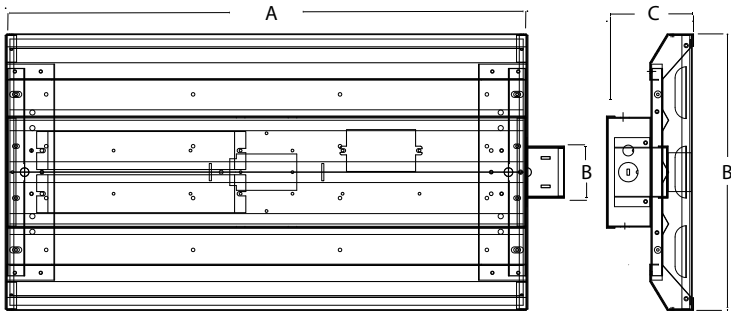
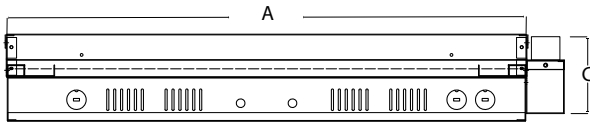


**LED HIGH BAY LINEAR**  
**ECO SERIES GEN 2**



**PRODUCT DESCRIPTION:**

The Eco High Bay Series is a cost-effective and quality solution for lighting gymnasiums, warehouses, distribution centers, manufacturing facilities, big box retailers, and other commercial and industrial applications. A dimmable and compact product made of galvanized steel housing and white electrostatic powder coat finish, it delivers a high lumen output to replace both 4 or 6 lamp T5HO fluorescent highbay or 400W HID highbay fixtures. Cable, pendant and surface mounting options enable the highbay to be customized to meet virtually any lighting requirement.

**FEATURES:**

- Trade Agreements Act (TAA) and Buy American Act (BAA) compliant product available - contact MaxLite for details
- Dimmable
- Power factor >0.9
- Standard with frosted lens
- Universal voltage 120-277V and high voltage option 347-480V
- L70 lumen maintenance of 100,000 hours, L90 to meet DLC Premium
- Operating temperature: -4°F to 122°F (-20°C to 50°C)
- CCT of 4000K and 5000K with <5 step SDCM
- Surface or suspension mounted
- V-hook and 40" knotted chain included in standard model
- Suitable for Damp locations
- Operating humidity 10% to 80% RH non-condensing
- Option for cord and plugs for all voltages
- Sensor option
- 17W BBU option
- Wire guard for all sizes as accessory
- Lens material is PMMA (polymethylmethacrylate)

**WARRANTY:**

10-year standard warranty with labor allowance\* (further details available at [www.maxlite.com/warranties](http://www.maxlite.com/warranties))  
\*Warranty Limitations: Product must be rated for the application per the Product Data Sheet (PDS); operated ≤16 hrs; in ambient of -29°F to 104°F.

\*Up to \$25/unit; labor allowances of up to \$500/unit available for purchase – contact MaxLite representative for details.

DIMENSIONS			
PRODUCT	A	B	C
BLHE2-090DUF-XX	23.8"	12.6"	3.6"
BLHE2-135DUF-XX			
BLHE2-178DUF-XX			
BLHE2-090DUF-XXMS	29.3"	12.6"	3.6"
BLHE2-135DUF-XXMS			
BLHE2-178DUF-XXMS			
BLHE2-223DUF-XX	23.8"	17.3"	3.9"
BLHE2-223DUF-XXMS			

**MaxLite Makes It!**  
Don't see what you need? Additional wattages and specifications available upon request - contact your MaxLite rep!

MODEL SELECTION (Full list of order codes on pg. 2)			Typical order example: BLHE2-090DUF-40					
BLHE2	-		D	U	F			
FAMILY	-	WATTAGE (NOMINAL)	DIMMING	VOLTAGE	LENS	CCT	OPTIONS	CORDS & PLUGS
BLHE2= ECO Linear High Bay Gen 2	-	090= 90W	D= Dimming	U= 120-277V	F= Frosted	40= 4000K	(OMIT)= None	-C= Cord
		135= 135W						
		178= 178W					MS= Bi-level Motion sensor with Remote Control Capability	-C1= 10-FT 3-Wire Cord W 5-15P (120V, 15A)
		223= 223W		H= 347-480V			<sup>1</sup> EM= Battery Backup Unit	-C2= 10-FT 3-Wire Cord W L7-15P (277V, 15A)
							<sup>2</sup> MSV= Bi-level Motion Sensor with Remote Control Capability	C3= 10-FT 3-Wire Cord L24-20P (347V, 20A)
								C4= 10-FT 3-Wire Cord L8-20P (480V, 20A)

<sup>1</sup> EM only available in Universal models

<sup>2</sup> MSV only used for high voltage

**SPECIFICATIONS:**

		BLHE2-090DUF-50	BLHE2-135DUF-50	BLHE2-178DUF-50	BLHE2-223DUF-50
ITEM	SPECIFICATION	DETAILS			
GENERAL PERFORMANCE	Power Consumption (W)	90 W	135 W	178 W	223W
	Lumens Delivered (lm)	11,264 lm	17,024 lm	22,077 lm	27,763 lm
	Efficacy (lm/W)	129 lm/W	129 lm/W	127 lm/W	128 lm/W
	CRI	≥80			
	Color Temperature (K)	4000K and 5000K			
	L70 Lumen Maintenance* (hours)	>100,000 hrs.			
	Color Consistency	Proprietary binning for uniform color			
ELECTRICAL	Power Factor	≥0.9			
	Input Voltage	120-277V or 347-480V			
	Dimming	Dimmable (0-10V)			
PHYSICAL	Mounting	V hook and 40" chain standard (see Mounting Accessories chart for other options)			
	Operating Temperature	-4°F to 122°F			
	Humidity	20-85% RH, non-condensing			
CERTIFICATION	Certification	FCC, cULus			
	Material Usage	RoHS compliant; no mercury			
	Environment	Indoor / Damp			
	Warranty	10 year warranty*			
QUALIFICATION	DesignLight Consortium	DLC Premium			




\*L70 Lumen maintenance calculated for LED chip at max Ambient of 122°F (50°C)

**ORDERING:**



ORDER CODE	MODEL NUMBER	DLC PRODUCT ID	WATTAGE	CCT	
102407	BLHE2-090DUF-40	PH9LRJAH	90	4000K	
14099925	BLHE2-090DUF-40MS*	PH9LRJAH		5000K	
102529	BLHE2-090DUF-50	PCQASBXS		135	4000K
14099926	BLHE2-090DUF-50MS*	PCQASBXS			5000K
102599	BLHE2-135DUF-40	POHAYA34	135	4000K	
14099927	BLHE2-135DUF-40MS*	POHAYA34		5000K	
102542	BLHE2-135DUF-50	PF1RNTSX		178	4000K
14099928	BLHE2-135DUF-50MS*	PF1RNTSX			5000K
102612	BLHE2-178DUF-40	PB3BEUE9	178		4000K
14099929	BLHE2-178DUF-40MS*	PB3BEUE9		5000K	
102544	BLHE2-178DUF-50	PPXOH1Y0		223	4000K
14099930	BLHE2-178DUF-50MS*	PPXOH1Y0	5000K		
14099935	BLHE2-223DUF-40	PH5CDVQU	223		4000K
14099936	BLHE2-223DUF-40MS*	PH5CDVQU			5000K
14099937	BLHE2-223DUF-50	PBYDF5MV		223	4000K
14099938	BLHE2-223DUF-50MS*	PBYDF5MV			5000K

\*MS remote sold separately.

**SENSOR INFORMATION:**

SENSOR	TECHNOLOGY	DIMMING	DAYLIGHT HARVESTING	REMOTE CONTROL	
MS	HIGH FREQUENCY	BI-LEVEL	SET POINT	YES	
BLHE-MSOKIT	PIR	ON/OFF	SET POINT	NO	
MSV (347-480)	PIR	BI-LEVEL	SET POINT	YES	

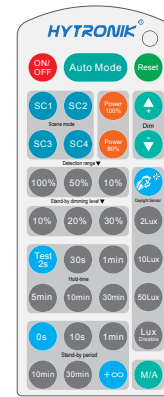
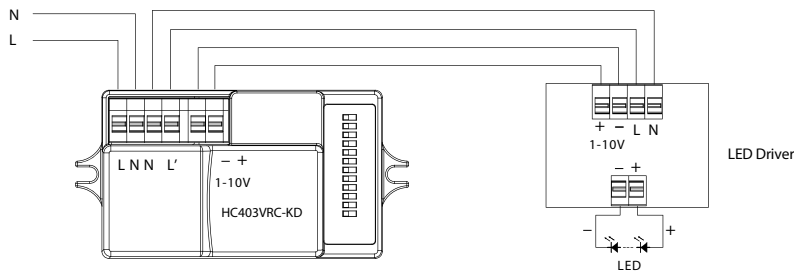
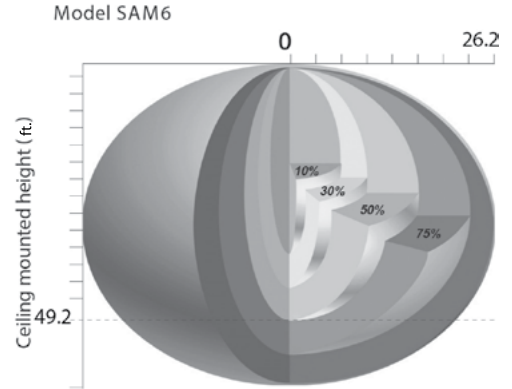
\*For motion sensor setting and information, please visit [www.maxlite.com/controls](http://www.maxlite.com/controls)

ACCESSORIES				
DESCRIPTION	APPLICATION	MODEL NUMBER	ORDER CODE	ACCESSORY IMAGE
WIREGUARD	90W, 135W, 178W	BLHE2-WGW1	102661	
	223W	BLHE2-WGW2	102662	
SURFACE MOUNT KIT	90W, 135W, 178W	BLHE2-SMK1	102659	
	223W	BLHE2-SMK2	102660	
STEM MOUNT KIT (3/4" DIAMETER HOLE)	All Wattages	BLHE2-MPK	102658	
FIELD INSTALLABLE ON/OFF PIR MOTION SENSOR KIT	All Wattages	BLHE-MSOKIT	1409828	
15' CABLE KIT	All Wattages	MLCHKLSU15	74138	
20' CABLE KIT	All Wattages	MLCHKSQ	71119	
FIELD INSTALLABLE BATTERY BACKUP - PROVIDES 1300 LUMENS FOR 90 MINUTES	All Wattages	EBUUP5017D01108	100750	
REMOTE CONTROL FOR SENSOR COMMISSIONING	All Wattages <b>(120-277V)</b>	RMHYTHRC-05	108133	
REMOTE CONTROL FOR MSV 347-480V COMMISSIONING	All Wattages <b>(347-480V)</b>	FSIR-100	102184	

\* No mounting hardware is included. Battery backup must be remote installed.

**SENSOR SPECIFICATION:**

These fixtures use a high frequency sensor designed specifically for high bays. The sensors are able to “see through” sheetrock walls (and all other non-metal, non-concrete surfaces). If your application requires PIR technology, please contact MaxLite for field installable PIR kits. Remote control required for commissioning of sensor.



HRC-05  
Note: the buzzer beeps one time when RC receives signal successfully.

Below are all available settings for the MS (motion sensor) option. Default settings are highlighted in green.

- 1 Detection Range**  
Sensor sensitivity can be adjusted by selecting the combination on the DIP switches to fit precisely for each specific application.

1	2	
I	● ●	100%
II	● ○	75%
III	○ ●	50%
IV	○ ○	10%

I – 100%  
II – 75%  
III – 50%  
IV – 10%
- 2 Hold-time**  
Select the dip switch configuration for the full brightness on-time after presence detection. Please note that this function is disabled when the natural daylight exceeds the daylight threshold setting for more than 5 minutes.

1	2	3	
I	● ● ●	5s	
II	● ● ○	30s	
III	● ● ●	1min	
IV	● ● ○	5min	
V	● ● ●	10min	
VI	● ● ○	20min	
VII	● ● ●	30min	

I – 5s  
II – 30s  
III – 1min  
IV – 5min  
V – 10min  
VI – 20min  
VII – 30min
- 3 Daylight Threshold**  
Set the level according to the fixture and environment. The light will not turn on if ambient lux level exceeds the daylight threshold preset. Please note that the ambient lux level refers to internal light reaching the sensor. Disabling the daylight sensor will put the sensor into occupancy detection only mode.

1	2	
I	● ●	Disable
II	● ○	50Lux
III	○ ●	10Lux
IV	○ ○	2Lux

I – Disable  
II – 50Lux  
III – 10Lux  
IV – 2Lux
- 4 Stand-by period (corridor function)**  
This is the time period you would like to keep at the low light output level before it is completely switched off in the long absence of people.  
Note: “0s” means on/off control;  
“+ ∞” means the stand-by time is infinite and the fixture never switches off.

1	2	3	
I	● ● ●	0s	
II	● ● ○	10s	
III	● ● ●	1min	
IV	● ● ○	5min	
V	● ● ●	10min	
VI	● ● ○	30min	
VII	● ● ●	1H	
VIII	● ● ○	+∞	

I – 0s  
II – 10s  
III – 1min  
IV – 5min  
V – 10min  
VI – 30min  
VII – 1H  
VIII – +∞
- 5 Stand-by dimming level**  
The setting is used to select the desired dimmed light level used in periods of absence for enhanced comfort and safety.

1	2	
I	● ●	10%
II	● ○	20%
III	○ ●	30%
IV	○ ○	50%

I – 10%  
II – 20%  
III – 30%  
IV – 50%

Sensor principle	High Frequency (microwave)
Operation frequency	5.8GHz +/- 75MHz
Transmission power	<0.2mW
SAM5 SAM9	Max. 8m x 5m
SAM6	Max. 16m x 15m
Detection angle	30° ~ 150°
DIP Switch Settings (HC403VRC-KD):	
Sensitivity	10% / 50% / 75% / 100%
Hold-time	5s ~ 30min (selectable)
Daylight threshold	2 ~ 50 lux, disabled
Stand-by period	0s ~ 1h, +∞ (selectable)
Stand-by dimming level	10% / 20% / 30% / 50%
Operation temperature	Ta: -20°C ~ +60°C
Case temperature (Max.)	Tc: +80°C
IP rating	IP20