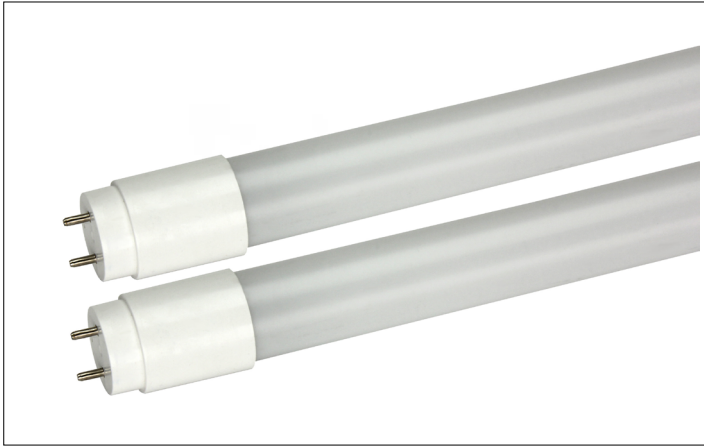


LED T8 EXTERNAL DRIVER



1-2 Lamp Kit



3-4 Lamp Kit

PRODUCT DESCRIPTION:

MaxLite LED T8 with External Driver are the ideal energy saving choices when upgrading traditional linear T8 fluorescent lamps in fixtures containing standard G13 (medium bi-pin) sockets.



FEATURES:

- Instant on
- Dimmable to 10%
- Mercury free and virtually no UV or IR light
- Suitable for open or enclosed fixtures
- Suitable for dry and damp locations

CONTROLS READY:

Bring enhanced energy savings with c-Max Lighting controls. To add c-Max Basic controls, simply purchase the CN-MGMST control node with the lamp kit to enable motion sensing and high trim. Installation is a breeze without the need for any mounting hardware. To add networking capabilities choose NPP-300W power pack and NPPSL-PSW sensor to add c-Max Network controls. Commission via remote for c-Max Basic or use the c-Max app for c-Max Network

WARRANTY:

5-year standard warranty (further details available at www.maxlite.com/warranties) Product may be eligible for a warranty extension to 10 years, for an additional fee. Contact MaxLite for details.

| FAMILY | WATTAGE | LAMP TYPE | OPERATION | SIZE | CCT | DRIVER |
|--------|-------------|-------------|---------------------|---------|-------------------------------------|--|
| L= LED | 7.5= 7.5W | T8= T8 TUBE | EX= EXTERNAL DRIVER | 2= 2-FT | 35= 3500K 40= 4000K 50= 5000K | DR1L7.5= EXTERNAL DRIVER FOR 1-LAMP DR2L7.5= EXTERNAL DRIVER FOR 2-LAMP DR3L7.5= EXTERNAL DRIVER FOR 3-LAMP DR4L7.5= EXTERNAL DRIVER FOR 4-LAMP |
| FAMILY | WATTAGE | LAMP TYPE | OPERATION | SIZE | CCT | DRIVER |
| L= LED | 11.5= 11.5W | T8= T8 TUBE | EX= EXTERNAL DRIVER | 3= 3-FT | 35= 3500K 40= 4000K 50= 5000K | DR1L11.5= EXTERNAL DRIVER FOR 1-LAMP DR2L11.5= EXTERNAL DRIVER FOR 2-LAMP DR3L11.5= EXTERNAL DRIVER FOR 3-LAMP DR4L11.5= EXTERNAL DRIVER FOR 4-LAMP |
| FAMILY | WATTAGE | LAMP TYPE | OPERATION | SIZE | CCT | DRIVER |
| L= LED | 11.5= 11.5W | T8= T8 TUBE | EX= EXTERNAL DRIVER | 4= 4-FT | 35= 3500K 40= 4000K 50= 5000K | DR1L11.5= EXTERNAL DRIVER FOR 1-LAMP DR2L11.5= EXTERNAL DRIVER FOR 2-LAMP DR3L11.5= EXTERNAL DRIVER FOR 3 LAMP DR4L11.5= EXTERNAL DRIVER FOR 4-LAMP |
| FAMILY | WATTAGE | LAMP TYPE | OPERATION | SIZE | CCT | DRIVER |
| L= LED | 13= 13W | T8= T8 TUBE | EX= EXTERNAL DRIVER | 4= 4-FT | 35= 3500K 40= 4000K 50= 5000K | DR1L13= EXTERNAL DRIVER FOR 1-LAMP DR2L13= EXTERNAL DRIVER FOR 2-LAMP DR3L13= EXTERNAL DRIVER FOR 3 LAMP DR4L13= EXTERNAL DRIVER FOR 4-LAMP |



LED T8 EXTERNAL DRIVER

EXTERNAL DIMMABLE T8 SERIES - UL TYPE-C

STOCKED ITEMS | 2ft - 7.5W

| ORDER CODE | MODEL NUMBER | DLC PRODUCT ID | PRODUCT DESCRIPTION |
|--------------|--------------------|----------------|---|
| 3500K | | | |
| 105146 | L7.5T8EX235DR1L7.5 | PL0T5BPSEXM1 | 7.5W T8 2-FT LED (UL-C) 3500K (1 LAMP) EXTERNAL DRIVER |
| 105072 | L7.5T8EX235DR2L7.5 | PLGQR4PSW30Q | 7.5W T8 2-FT LED (UL-C) 3500K (2 LAMPS) EXTERNAL DRIVER |
| 105149 | L7.5T8EX235DR3L7.5 | PLXUVVUTW0DV | 7.5W T8 2-FT LED (UL-C) 3500K (3 LAMPS) EXTERNAL DRIVER |
| 105075 | L7.5T8EX235DR4L7.5 | PLZQO5X1T6G8 | 7.5W T8 2-FT LED (UL-C) 3500K (4 LAMPS) EXTERNAL DRIVER |
| 4000K | | | |
| 105147 | L7.5T8EX240DR1L7.5 | PL1ZECUKFAD6 | 7.5W T8 2-FT LED (UL-C) 4000K (1 LAMP) EXTERNAL DRIVER |
| 105073 | L7.5T8EX240DR2L7.5 | PL8PBOJBU8KQ | 7.5W T8 2-FT LED (UL-C) 4000K (2 LAMPS) EXTERNAL DRIVER |
| 105150 | L7.5T8EX240DR3L7.5 | PLVRM8ZXABI7 | 7.5W T8 2-FT LED (UL-C) 4000K (3 LAMPS) EXTERNAL DRIVER |
| 105076 | L7.5T8EX240DR4L7.5 | PLPZA562Z1OX | 7.5W T8 2-FT LED (UL-C) 4000K (4 LAMPS) EXTERNAL DRIVER |
| 5000K | | | |
| 105148 | L7.5T8EX250DR1L7.5 | PL6JZ167XP3Q | 7.5W T8 2-FT LED (UL-C) 5000K (1 LAMP) EXTERNAL DRIVER |
| 105074 | L7.5T8EX250DR2L7.5 | PL6TDE9G0LFP | 7.5W T8 2-FT LED (UL-C) 5000K (2 LAMPS) EXTERNAL DRIVER |
| 105151 | L7.5T8EX250DR3L7.5 | PLS90N4CQOSL | 7.5W T8 2-FT LED (UL-C) 5000K (3 LAMPS) EXTERNAL DRIVER |
| 105077 | L7.5T8EX250DR4L7.5 | PLBRL797KB55 | 7.5W T8 2-FT LED (UL-C) 5000K (4 LAMPS) EXTERNAL DRIVER |

STOCKED ITEMS | 3ft - 11.5W

| ORDER CODE | MODEL NUMBER | DLC PRODUCT ID | PRODUCT DESCRIPTION |
|--------------|----------------------|----------------|--|
| 3500K | | | |
| 105152 | L11.5T8EX335DR1L11.5 | PL9QELOKUSUJ | 11.5W T8 3-FT LED (UL-C) 3500K (1 LAMP) EXTERNAL DRIVER |
| 105078 | L11.5T8EX335DR2L11.5 | PLMBE7JYT1GG | 11.5W T8 3-FT LED (UL-C) 3500K (2 LAMPS) EXTERNAL DRIVER |
| 105155 | L11.5T8EX335DR3L11.5 | | 11.5W T8 3-FT LED (UL-C) 3500K (3 LAMPS) EXTERNAL DRIVER |
| 105081 | L11.5T8EX335DR4L11.5 | | 11.5W T8 3-FT LED (UL-C) 3500K (4 LAMPS) EXTERNAL DRIVER |
| 4000K | | | |
| 105153 | L11.5T8EX340DR1L11.5 | PLKTGZXN8R5B | 11.5W T8 3-FT LED (UL-C) 4000K (1 LAMP) EXTERNAL DRIVER |
| 105079 | L11.5T8EX340DR2L11.5 | PLKMWSAOXZMR | 11.5W T8 3-FT LED (UL-C) 4000K (2 LAMPS) EXTERNAL DRIVER |
| 105156 | L11.5T8EX340DR3L11.5 | | 11.5W T8 3-FT LED (UL-C) 4000K (3 LAMPS) EXTERNAL DRIVER |
| 105082 | L11.5T8EX340DR4L11.5 | | 11.5W T8 3-FT LED (UL-C) 4000K (4 LAMPS) EXTERNAL DRIVER |
| 5000K | | | |
| 105154 | L11.5T8EX350DR1L11.5 | PLREKPJ3VVPW | 11.5W T8 3-FT LED (UL-C) 5000K (1 LAMP) EXTERNAL DRIVER |
| 105080 | L11.5T8EX350DR2L11.5 | PLZEPSB9O7JS | 11.5W T8 3-FT LED (UL-C) 5000K (2 LAMPS) EXTERNAL DRIVER |
| 105157 | L11.5T8EX350DR3L11.5 | | 11.5W T8 3-FT LED (UL-C) 5000K (3 LAMPS) EXTERNAL DRIVER |
| 105083 | L11.5T8EX350DR4L11.5 | | 11.5W T8 3-FT LED (UL-C) 5000K (4 LAMPS) EXTERNAL DRIVER |

STOCKED ITEMS | 4ft - 11.5W

| ORDER CODE | MODEL NUMBER | DLC PRODUCT ID | PRODUCT DESCRIPTION |
|--------------|----------------------|----------------|--|
| 3500K | | | |
| 105158 | L11.5T8EX435DR1L11.5 | PLS6O6WF65TL | 11.5W T8 4-FT LED (UL-C) 3500K (1 LAMP) EXTERNAL DRIVER |
| 105084 | L11.5T8EX435DR2L11.5 | PLNODNVWLJ9R | 11.5W T8 4-FT LED (UL-C) 3500K (2 LAMPS) EXTERNAL DRIVER |
| 105161 | L11.5T8EX435DR3L11.5 | PLIXH760NOGV | 11.5W T8 4-FT LED (UL-C) 3500K (3 LAMPS) EXTERNAL DRIVER |
| 105087 | L11.5T8EX435DR4L11.5 | PLSRFPY0XOXU | 11.5W T8 4-FT LED (UL-C) 3500K (4 LAMPS) EXTERNAL DRIVER |
| 4000K | | | |
| 105159 | L11.5T8EX440DR1L11.5 | PLJSNIQ8XF03 | 11.5W T8 4-FT LED (UL-C) 4000K (1 LAMP) EXTERNAL DRIVER |
| 105085 | L11.5T8EX440DR2L11.5 | PL6LYO0682JD | 11.5W T8 4-FT LED (UL-C) 4000K (2 LAMPS) EXTERNAL DRIVER |
| 105162 | L11.5T8EX440DR3L11.5 | PLUY9MLHY5CP | 11.5W T8 4-FT LED (UL-C) 4000K (3 LAMPS) EXTERNAL DRIVER |
| 105088 | L11.5T8EX440DR4L11.5 | PL8828N9DF32 | 11.5W T8 4-FT LED (UL-C) 4000K (4 LAMPS) EXTERNAL DRIVER |
| 5000K | | | |
| 105160 | L11.5T8EX450DR1L11.5 | PL554X7KCXN9 | 11.5W T8 4-FT LED (UL-C) 5000K (1 LAMP) EXTERNAL DRIVER |
| 105086 | L11.5T8EX450DR2L11.5 | PLV5AWTGLZL0 | 11.5W T8 4-FT LED (UL-C) 5000K (2 LAMPS) EXTERNAL DRIVER |
| 105163 | L11.5T8EX450DR3L11.5 | PLN3R6D251PP | 11.5W T8 4-FT LED (UL-C) 5000K (3 LAMPS) EXTERNAL DRIVER |
| 105089 | L11.5T8EX450DR4L11.5 | PLEP8L8BCK6Z | 11.5W T8 4-FT LED (UL-C) 5000K (4 LAMPS) EXTERNAL DRIVER |

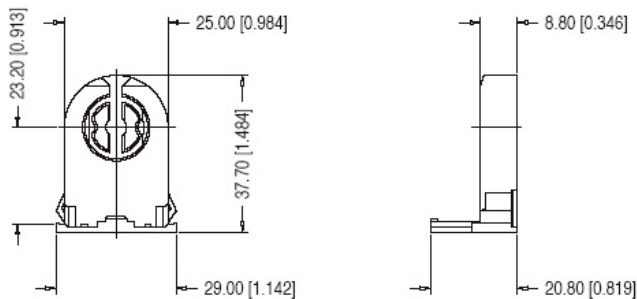
STOCKED ITEMS | 4ft - 13W

| ORDER CODE | MODEL NUMBER | DLC PRODUCT ID | PRODUCT DESCRIPTION |
|--------------|------------------|----------------|--|
| 3500K | | | |
| 105164 | L13T8EX435DR1L13 | PLOY83XX6RO9 | 13W T8 4-FT LED (UL-C) 3500K (1 LAMP) EXTERNAL DRIVER |
| 105090 | L13T8EX435DR2L13 | PLJQ6877W7DS | 13W T8 4-FT LED (UL-C) 3500K (2 LAMPS) EXTERNAL DRIVER |
| 105167 | L13T8EX435DR3L13 | PLABOHGK2VNS | 13W T8 4-FT LED (UL-C) 3500K (3 LAMPS) EXTERNAL DRIVER |
| 105093 | L13T8EX435DR4L13 | PLRZFWP6Q74D | 13W T8 4-FT LED (UL-C) 3500K (4 LAMPS) EXTERNAL DRIVER |
| 4000K | | | |
| 105165 | L13T8EX440DR1L13 | PL3LBIJLVZV1F | 13W T8 4-FT LED (UL-C) 4000K (1 LAMP) EXTERNAL DRIVER |
| 105091 | L13T8EX440DR2L13 | PLBNAZVTVJIO | 13W T8 4-FT LED (UL-C) 4000K (2 LAMPS) EXTERNAL DRIVER |
| 105168 | L13T8EX440DR3L13 | PL1XMHDDSKOR | 13W T8 4-FT LED (UL-C) 4000K (3 LAMPS) EXTERNAL DRIVER |
| 105094 | L13T8EX440DR4L13 | PL9MCRE5C3O2 | 13W T8 4-FT LED (UL-C) 4000K (4 LAMPS) EXTERNAL DRIVER |
| 5000K | | | |
| 105166 | L13T8EX450DR1L13 | PL8EPO058L8W | 13W T8 4-FT LED (UL-C) 5000K (1 LAMP) EXTERNAL DRIVER |
| 105092 | L13T8EX450DR2L13 | PLEI0030PRD8 | 13W T8 4-FT LED (UL-C) 5000K (2 LAMPS) EXTERNAL DRIVER |
| 105169 | L13T8EX450DR3L13 | PL0W0Y4M8AWT | 13W T8 4-FT LED (UL-C) 5000K (3 LAMPS) EXTERNAL DRIVER |
| 105095 | L13T8EX450DR4L13 | PLWF1L0H93J7 | 13W T8 4-FT LED (UL-C) 5000K (4 LAMPS) EXTERNAL DRIVER |

SPECIFICATIONS:

| ITEM | SPECIFICATION | 2 - FOOT - DETAILS | 3 - FOOT - DETAILS | 4 - FOOT - DETAILS | |
|----------------------------|-------------------------------|----------------------------|--------------------|--------------------|--------------|
| GENERAL PERFORMANCE | Power Consumption (bare lamp) | 7.5W | 11.5W | 11.5W | 13W |
| | System Power | 9W | 13W | 13W | 15W |
| | Lumens Delivered | 1150-1200 lm | 1650-1700 lm | 1750-1800 lm | 2100-2200 lm |
| | Efficacy | 128-133 lm/W | 127-131 lm/W | 135-138 lm/W | 140-147lm/w |
| | CRI | ≥80 | | | |
| | Beam Angle | 160° | | | |
| | Color Temperature (CCT) | 3500K, 4000K & 5000K | | | |
| | Lumen Maintenance (L70) | 50,000 Hours | | | |
| ELECTRICAL | Power Factor | ≥ 0.90 | | | |
| | Input Voltage | 120V-277V, 50/60 Hz | | | |
| PHYSICAL | Operating Temperature | 4°F to 113°F (-20 to 45°C) | | | |
| | Lens | Coated Glass | | | |
| | Base | Medium Bi-Pin (G13) | | | |
| CERTIFICATION | Certification | cETLus, FCC | | | |
| | Material Usage | RoHS compliant; no mercury | | | |
| | Environment | Damp location | | | |
| | Warranty | 5 Years | | | |

LINE DRAWING DIMENSION (G13LPNS)



ACCESSORIES (SOLD SEPARATELY):

| ORDER CODE | MODEL NUMBER | DESCRIPTION | ACCESSORIES IMAGE |
|------------|--------------|---|-------------------|
| 73978 | G13LPNS | G13 Low Profile Non-Shunted Lamp Holder | |
| 103548 | T8C-BBU | Battery Back Up for Type C Linears | |
| 105891 | CN-MGMST | Control Node Magnet, Microwave Motion Sensor, Translucent | |
| 105567 | CN-REMOTE | Control Node Remote Control | |
| 106318 | NPP-300W | 120-277V Network Power Pack 300W Max | |
| 107788 | NPPSL-PSW | Network Power Pack Pir Sensor, 12v, White | |

Sensor

| SENSOR | TECHNOLOGY | DIMMING | REMOTE CONTROL | QR CODE |
|----------|------------------------------|----------|----------------|---------|
| CN-MGMST | Microwave for Motion Sensing | Bi-Level | CN-REMOTE | |