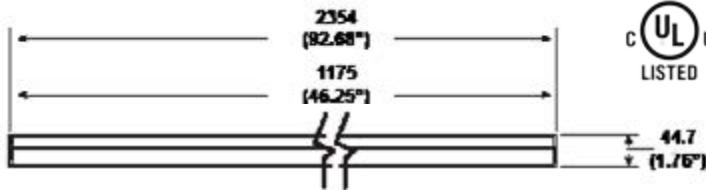


POLYGON™ LINEAR LED FIXTURE
LSP SERIES



4' Model



PRODUCT DESCRIPTION:

Integrating multiple mounting and optic possibilities into a sleek form factor, MaxLite's Polygon LED Linear fixture is an efficient alternative to fluorescent lighting that enhances any commercial or industrial space. The Polygon is offered in low bay and parking optic distributions. Its premium appearance suits indoor classrooms, offices and long, linear conference rooms, but is versatile enough for applications such as large packing and sorting areas.

Available in suspended and surface mounting configurations.*

FEATURES:

- One-piece aluminum chassis
- Soft white, low glare diffuser design
- Extremely low profile height for shallow ceilings, or ADA wall compliance
- Beveled optic surface resists vehicle antenna damage
- Integrated hanging loops included
- Universal mounting standard. Comes with integral hanging loops and with standard surface mounting application

CONSTRUCTION:

- One-piece extruded body of 6063 Aluminum
- Polycarbonate translucent diffuser
- Molded end caps
- Full-length service channel on rear
- CRI>80

CONTROL:

- 0-10V Dimming standard
- Both 0-10v dimming and occupancy sensors supports California T24 compliance
- Optional occupancy sensor versions available**
 - Ambient threshold selectable
 - Dimming levels selectable
 - Delay times selectable

ORDERING INFORMATION

ORDER NUMBER	MODEL	WATTS (NOMINAL)	DESCRIPTION	DIMENSION (L" x W" x H")	CCT
75172	LSP4805SU44DV35*	39	Polygon Linear LED 4' Lowbay Fixture	46.3" x 4.9" x 1.8"	3500K
75174	LSP4805SU44DV50*	39	Polygon Linear LED 4' Lowbay Fixture	46.3" x 4.9" x 1.8"	5000K
75176	LSP9605SU55DV35* †	55	Polygon Linear LED 8' Lowbay Fixture	92.7" X 4.9" X 1.8"	3500K
75178	LSP9605SU55DV50* †	55	Polygon Linear LED 8' Lowbay Fixture	92.7" X 4.9" X 1.8"	5000K
75180	LSP9605SU80DV35*	80	Polygon Linear LED 8' Lowbay Fixture	92.7" X 4.9" X 1.8"	3500K
75182	LSP9605SU80DV50*	80	Polygon Linear LED 8' Lowbay Fixture	92.7" X 4.9" X 1.8"	5000K

ACCESSORIES

ORDER CODE	MODEL NUMBER	DESCRIPTION
74139	MLCHKLSV15	Cable Kit 15' Loop 1 Pair
74447	MLCHKPFCC10	Cable Kit Power Feed Canopy Clear 10ft 18/3
74498	MLCHKNPFC10	Cable Kit Non-Power Feed Canopy White 10ft

NOTE:

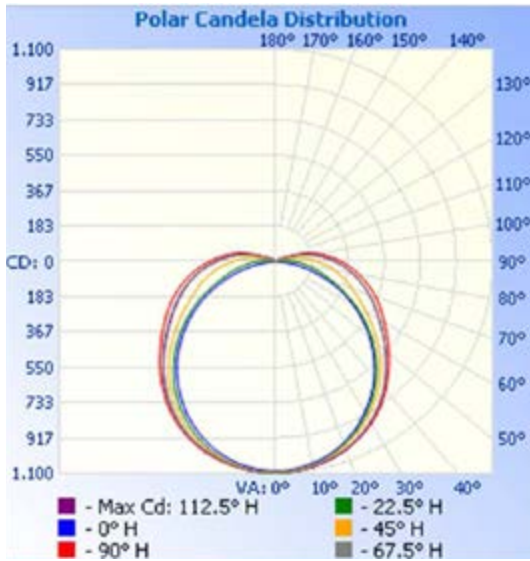
1. *All requests for surface mount versions should be stated at order entry as these are currently built to order. MaxLite plans to unify the two mounting approaches in upcoming production, but current orders are separate. Please contact MaxLite inside sales for any questions.
2. **Occ Sensor versions available in Q4-2015
3. † DLC qualified

SPECIFICATIONS:

		LSP4805SU44DVXX	LSP9605SU55DVXX	LSP9605SU80DVXX	
ITEM	SPECIFICATION	DETAILS		DETAILS	
GENERAL PERFORMANCE	Spacing Criteria	Contact MaxLite for layout details			
	Lumens Delivered (lm)	3900*	4106	5700*	6300* 8013 8400*
	Efficacy (lm/W)	100*	105.8	95*	103* 100 105*
	CCT	3500K	5184K	3500K	5000K 3500K 5000K
	Lumen Maintenance (L70)	50,000 Hrs			
ELECTRICAL	Power Consumption	38.8W		60W*	80.1W
	Input Voltage (V)	120-277V			
	Power Factor	>.99 @ 120VAC; >.91 @ 277VAC			
	Line Voltage linking	15 units max		12 Units max	10 Units max
	Operating Cycle	50/60 Hz			
	Control	0-10v Three wire lead; Dimming range 30%-100%			
SENSOR	Linking	30 Fixtures		20 Fixtures*	10 Fixtures*
	Type	Omni-directional PUR with Daylight Harvesting			
	Max load	MAX 800W			
	Ambient Level	Selectable (3) Level			
	Time Delay	Selectable (1 min - 30 min)			
	Dimming Levels	0 / 33% / 50% Selectable			
PHYSICAL	Dimensions	46.3" L x 4.9" W x 1.8" H		92.7" L x 4.9" W x 1.8" H	
	Weight	4.75 lbs		9.5 lbs	
	Housing	6063 Aluminum			
	Lens	Translucent White Polycarbonate			
	Mounting	Surface or Suspended			
	Operating Temperature	-20°C to 40°C (-4°F to 104°F)			
CERTIFICATION	Certification	UL, FCC, LM80		UL, FCC, LM80, DLC	UL, FCC, LM80, DLC
	Material Usage	Damp (Covered)			
	Environment	IESNA LM-80			
	Warranty	5 Year			

*PENDING LM-79 confirmation, for reference only

POLAR CANDELA DISTRIBUTION:



ISOFOOTCANDLE PLOT:

