

UTILITY STRIP LIGHT

naturaLED® Utility Strip Light provides the perfect solution for your lighting needs. The LED utility strip light maximizes energy savings and is designed for multiple applications including new construction. The fixture offers in 2ft, 4ft, or 8ft long and can be installed end to end.

The LED Utility Strip Light can be used for warehouse, parking garages, stairwells, offices, hallways and many other applications in industrial, commercial and residential. Types of installation include ceiling, wall, chain or cable mounting. Our Utility Strip Light is very versatile, efficient and is available in 20-80 watt, 4000K and 5000K delivering up to 12,000 lumens with excellent, consistent color. Our Utility Strip Light features an acrylic opaque lens with an aluminum body.



Features & Benefits

- ▶ DLC Qualified
- ▶ L70 Rated Chip for over 100,000 projected life hours
- ▶ Uniform and consistent color: ANSI C78.377-2017
- ▶ UL Damp
- ▶ Easy installation with multiple mounting options
- ▶ Mounting brackets and clips included for ceiling, wall, cable and chain
- ▶ 2KV Surge Protection
- ▶ Material: Aluminum and Opaque lens

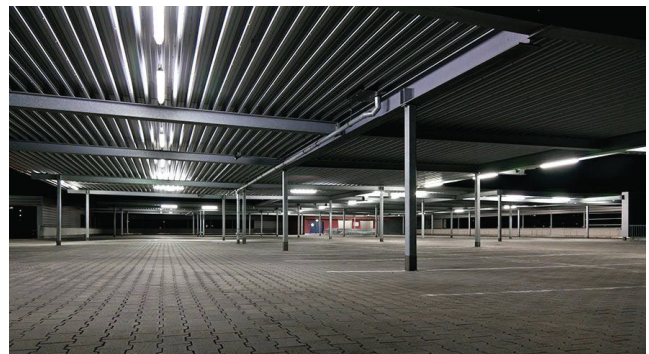
Specifications

- ▶ Input line voltage: 120-277V
- ▶ Power Factor: >0.9
- ▶ THD: <20%
- ▶ Dimmable: 0-10V
- ▶ Beam: Flood
- ▶ Operating temperature: -22°F - 113°F
- ▶ Finish: White

Applications

- ▶ Warehouses
- ▶ Pathway Lighting
- ▶ Parking Garage
- ▶ Stairwells and Hallways
- ▶ Retail Lighting

Mountings



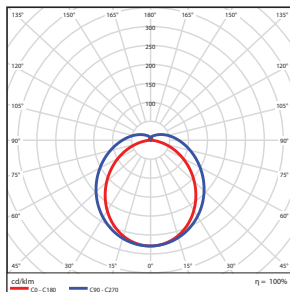
Ordering Information

*P= DLC Premium / S = Standard DLC

Code	Description	CCT	Watt	Lumen	Equiv Wattage	Size	Beam Angle	Voltage	Rated Hrs	DAMP LOCATION	DLC
7796	LED-FXUSL20/24FR/40K/MV	4000K	20	2,830	Replaces 1-2 2ft FL T8	3.26" x 24"	Flood	120-277	50,000	•	P
7798	LED-FXUSL24/48FR/40K/MV	4000K	24	3,099	Replaces 1-2 4ft FL T8	3.26" x 48"	Flood	120-277	50,000	•	P
7799	LED-FXUSL24/48FR/50K/MV	5000K	24	3,255		3.26" x 48"	Flood	120-277	50,000	•	P
9200	LED-FXUSL40/48FR/40K/MV	4000K	40	5,033	Replaces 3-4 4ft FL T8	3.26" x 48"	Flood	120-277	50,000	•	P
9201	LED-FXUSL40/48FR/50K/MV	5000K	40	5,286		3.26" x 48"	Flood	120-277	50,000	•	P
9202	LED-FXUSL64/96FR/40K/MV	4000K	64	7,989	Replaces 2-3 8ft FL T8	3.26" x 96"	Flood	120-277	50,000	•	P
9203	LED-FXUSL64/96FR/50K/MV	5000K	64	7,943		3.26" x 96"	Flood	120-277	50,000	•	P
9204	LED-FXUSL80/96FR/40K/MV	4000K	80	12,175	Replaces 3-4 8ft FL T8	3.26" x 96"	Flood	120-277	50,000	•	P
9205	LED-FXUSL80/96FR/50K/MV	5000K	80	12,296		3.26" x 96"	Flood	120-277	50,000	•	P

Photometric Data

20 Watt



Zonal Lumen Summary

Zone	Lumens	% Luminaire
0-30	567.78	21.50
0-40	926.69	35.10
0-60	1647.65	62.40
60-80	513.41	19.40
70-80	221.39	8.40
90-120	232.34	8.80
90-180	326.10	12.40
0-180	2640.28	100.00

Total Luminaire Efficiency = 100.00%

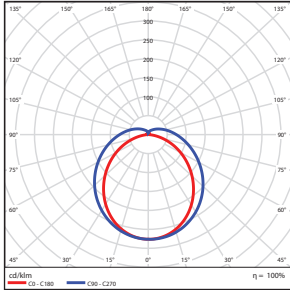
Illuminance at a Distance

	Center Beam fc	Beam Width	
5.0ft	29.5 fc	12.4 ft	21.3 ft
10.0ft	7.37 fc	24.8 ft	42.7 ft
15.0ft	3.27 fc	37.3 ft	64.0 ft
20.0ft	1.84 fc	49.7 ft	85.3 ft
25.0ft	1.18 fc	62.1 ft	106.7 ft
30.0ft	0.82 fc	74.5 ft	128.0 ft

■ Vert. Spread: 102.3°
■ Horiz. Spread: 129.8°

Photometric Data

24 Watt



Zonal Lumen Summary

Zone	Lumens	% Luminaire
0-30	628.97	21.30
0-40	1027.98	34.80
0-60	1833.19	62.10
60-80	577.38	19.60
70-80	249.87	8.50
90-120	261.26	8.90
90-180	363.94	12.30
0-180	2949.82	100.00

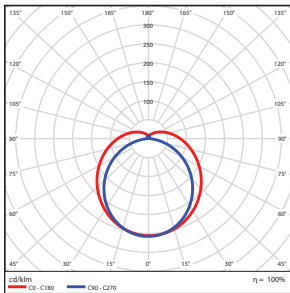
Total Luminaire Efficiency = 100.00%

Illuminance at a Distance

	Center Beam fc	Beam Width	
5.0ft	32.6 fc	12.5 ft	22.2 ft
10.0ft	8.14 fc	25.1 ft	44.4 ft
15.0ft	3.62 fc	37.6 ft	66.6 ft
20.0ft	2.04 fc	50.1 ft	88.8 ft
25.0ft	1.30 fc	62.7 ft	110.9 ft
30.0ft	0.90 fc	75.2 ft	133.1 ft

Vert. Spread: 102.8°
Horiz. Spread: 131.5°

40 Watt



Zonal Lumen Summary

Zone	Lumens	% Luminaire
0-30	1047.32	20.00
0-40	1722.82	32.90
0-60	3127.87	59.70
60-80	1062.72	20.30
70-80	467.13	8.90
90-120	522.13	10.00
90-180	719.22	13.70
0-180	5243.36	100.00

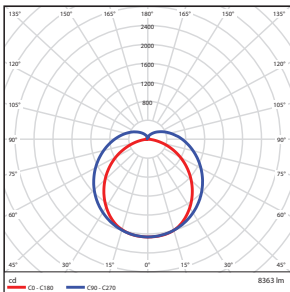
Total Luminaire Efficiency = 100.00%

Illuminance at a Distance

	Center Beam fc	Beam Width	
5.0ft	53.7 fc	26.2 ft	13.9 ft
10.0ft	13.4 fc	52.3 ft	27.8 ft
15.0ft	5.97 fc	78.5 ft	41.7 ft
20.0ft	3.36 fc	104.7 ft	55.6 ft
25.0ft	2.15 fc	130.9 ft	69.5 ft
30.0ft	1.49 fc	157.0 ft	83.4 ft

Vert. Spread: 138.2°
Horiz. Spread: 108.6°

64 Watt



Zonal Lumen Summary

Zone	Lumens	% Luminaire
0-30	1630.72	19.50
0-40	2691.95	32.20
0-60	4907.67	58.70
60-80	1699.03	20.30
70-80	753.12	9.00
90-120	883.26	10.60
90-180	1199.36	14.30
0-180	8362.75	100.00

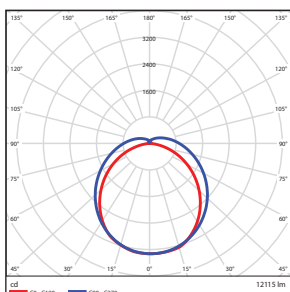
Total Luminaire Efficiency = 100.00%

Illuminance at a Distance

	Center Beam fc	Beam Width	
5.0ft	82.6 fc	13.4 ft	32.2 ft
10.0ft	20.6 fc	26.9 ft	64.3 ft
15.0ft	9.18 fc	40.3 ft	96.5 ft
20.0ft	5.16 fc	53.7 ft	128.7 ft
25.0ft	3.30 fc	67.2 ft	160.8 ft
30.0ft	2.29 fc	80.6 ft	193.0 ft

Vert. Spread: 106.7°
Horiz. Spread: 145.5°

80 Watt



Zonal Lumen Summary

Zone	Lumens	% Luminaire
0-30	2615.71	21.60
0-40	4295.44	35.50
0-60	7688.7	63.50
60-80	2391.92	19.70
70-80	1023.78	8.50
90-120	970.40	8.00
90-180	1341.42	11.10
0-180	12115.49	100.00

Total Luminaire Efficiency = 100.00%

Illuminance at a Distance

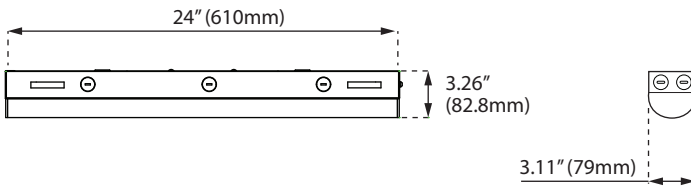
	Center Beam fc	Beam Width	
5.0ft	133 fc	13.6 ft	20.6 ft
10.0ft	33.3 fc	27.1 ft	41.2 ft
15.0ft	14.8 fc	40.7 ft	61.8 ft
20.0ft	8.32 fc	54.3 ft	82.4 ft
25.0ft	5.32 fc	67.8 ft	103.0 ft
30.0ft	3.70 fc	81.4 ft	123.6 ft

Vert. Spread: 107.2°
Horiz. Spread: 128.2°

Product Dimensions

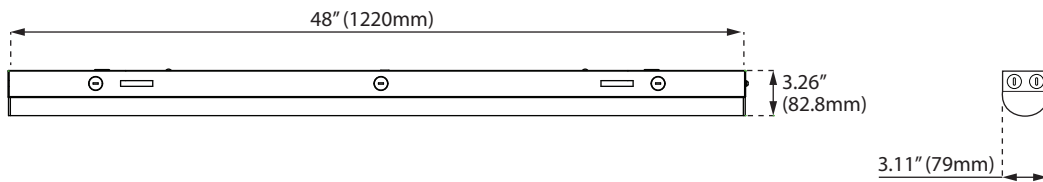
2ft

Weight: 2.42 lbs



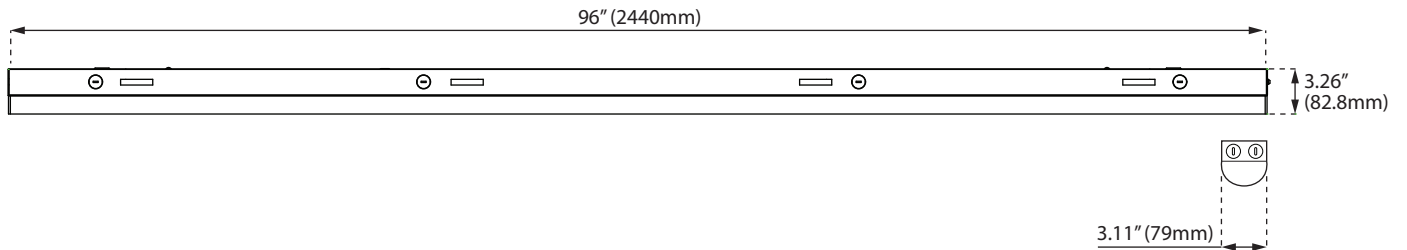
4ft

Weight: 3.66 lbs



8ft

Weight: 6.92 lbs



Package

