

NSW-841 / NSW-842 / NSW-843

Brick Die-Cast LED Dimmable Step Light

Source: 3.3W LED
Up to 86lm

Type _____

Project _____

Catalog No. _____

Notes _____

PRODUCT DESCRIPTION

Long lasting, energy efficient LED step lights provide illumination for safety around steps, balcony areas, or walkways. Warm white 3000K LED light mimics incandescent sources, but does not build up heat while casting a warm and welcoming glow. Durable cast zinc-magnesium face plates available in three finishes to match almost any decor. Efficient LED light sources are low maintenance, offer 50,000 hour lamp life, and savings over 80% in running costs when compared to 18W incandescent step lights.

FEATURES

- 120V Dimmable
- cULus listed for Wet Location
- Heavy duty wet listed housing required (ordered separately)
- Twenty-four LEDs offer a total load of only 3.3W
- Save over 80% when compared to 18W incandescent step lights
- Integrated, embedded driver
- 50,000 hours at 70% lumen maintenance rated life
- No harmful ultra violet light, infrared wavelengths, or light leak
- Available in Bronze, Brushed Nickel, or White finishes
- Three different face plate styles

CONSTRUCTION

Face Plate: Die-cast aluminum face plates. Powder coated bronze, brushed nickel or white finish. Matching screw caps included.

Mounting: Requires wet location rated housing (NSW-800). Optional 24-1/2" adjustable bar hanger kit also available (NRA-6301).

ELECTRICAL

Input Voltage: 120V

Lumens / Wattage:

NSW-841/32W: 75lm / 3.3W

NSW-842/32W: 86lm / 3.3W

NSW-843/32W: 73lm / 3.3W

Color Temperature: 3000K

CRI: 90+

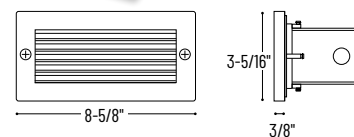
Dimming: Dimmable

LABELS AND LISTINGS

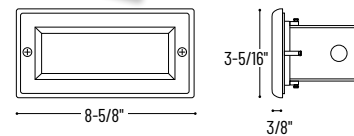
- cULus Listed for Wet Location
- IP65 rated when used with NSW-800
- 5-Year Limited Warranty



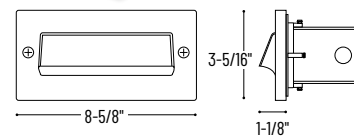
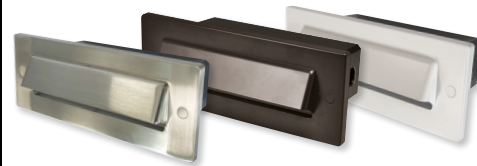
PRODUCT IMAGES AND DIMENSIONS



NSW-841/32
Louver



NSW-842/32
Lensed



NSW-843/32
Shroud



NSW-800 / NRA-6301

Wet Listed Housing with 24-1/2" Adjustable Bar Hangers

Brick Die-Cast LED Step Light, 120V Dimmable

Face Plate	Color Temperature	Finish
NSW-841/32 = Louver	/32 = 3000K	BN = Brushed Nickel
NSW-842/32 = Lensed		BZ = Bronze
NSW-843/32 = Shroud		W = White

NSW-800 = Wet Listed Housing

NRA-6301 = 24-1/2" Adjustable Bar Hanger Kit (includes housing bracket)

Example: **NSW-843/32W & NSW-800** - Brick LED Step Light, Shroud, 120V Dimmable, 3000K, White finish