

# Recessed Light Trims

## MODEL ODT2-352 SG WH



### WARNING

**WARNING — THE INSTALLATION MUST BE CARRIED OUT BY A QUALIFIED ELECTRICIAN.**

1. Recessed Light Trims are for bathroom use
2. Please keep the Recessed Light Trims away from any corrosive substance, and please use dry cloth when you clean it
3. Recessed Light Trims can only be installed by a qualified electrician
4. Before installation or maintenance, please read this instruction manual thoroughly

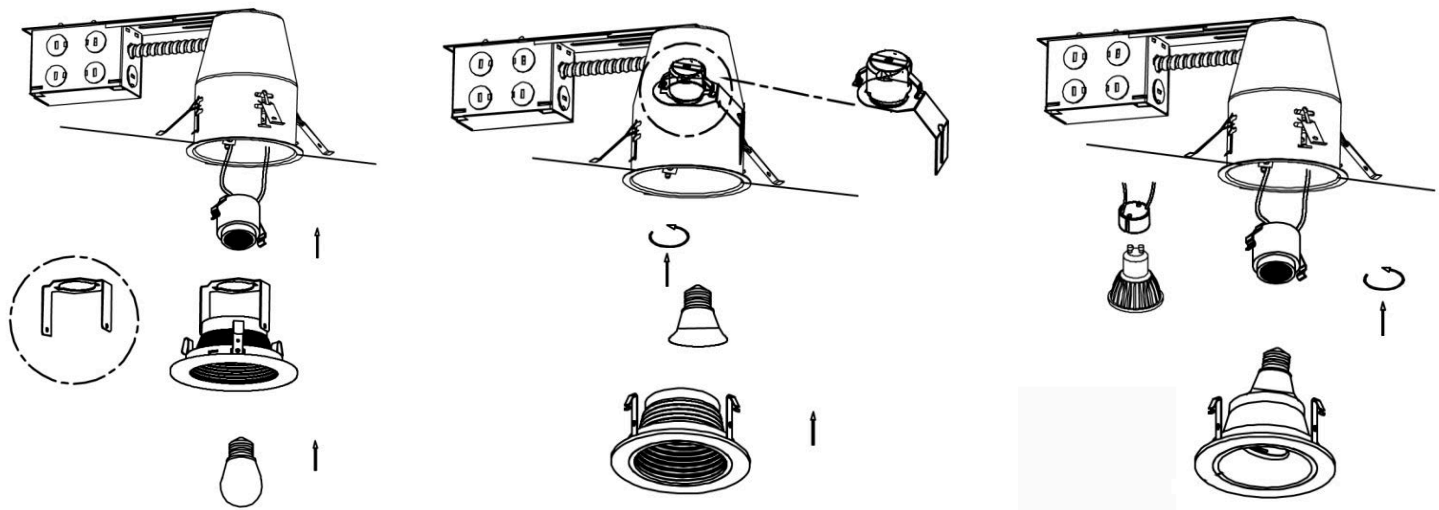
### CAUTION

**PLEASE READ INSTRUCTION BEFORE COMMENCING INSTALLATION AND RETAIN FOR FUTURE REFERENCES.**

**Electrical products can cause death or injury, or damage to property.**

**If in any doubt about the installation or use of this product, consult a competent electrician.**

### INSTALLATION GUIDE



1. Put the bracket on the trim and fix it by screws
2. Put the socket on the bracket, and install the trim to the housing
3. Put the bulb on the socket

4. Adjust socket to an appropriate position
5. Install the bulb on the socket
6. Put the trim into the housing

7. Install the bulb on the socket
8. Put the trim into the housing

ORTECH reserves the right to modify at any time, without notice, any or all of our product's features, designs, components and specifications to meet market changes.