



FPH1-SERIES

Flat Panel Hybrid Fixtures



INSTRUCTIONS FOR

- FPH1-1440S35-1 FPH1-2240S35-1 FPH1-2450S35-1
- FPH1-1440S40-1 FPH1-2240S40-1 FPH1-2450S40-1
- FPH1-1440S50-1 FPH1-2240S50-1 FPH1-2450S50-1

WHAT'S IN THE BOX

FLAT PANEL LED FIXTURE

WHAT YOU'LL NEED (NOT INCLUDED)

- SAFETY GLASSES
- WIRE CUTTERS
- WIRING SUPPLIES AS SPECIFIED BY CODE
- AIRCRAFT CABLES OR SURFACE MOUNT KIT (IF NOT INSTALLING IN T-BAR)

IMPORTANT

Before assembling your fixture, please make sure that you carefully read through this instruction sheet.

WARNING

Turn off electrical power at fuse or circuit breaker box before wiring fixture to the power supply. Turn off the power when you perform any maintenance.

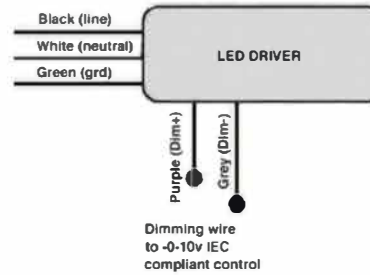
Verify that supply voltage is correct by comparing it with the luminaire label information.

Risk of fire: minimum 90°C / 194°F supply conductors

Modifications to the product voids the warranty.

When dimming lower than 5% (with 3% tolerance), the synchronous dimming difference may be due to difference of wire or amount of load, which is uncontrollable.

GENERAL WIRING DIAGRAM



NOTE:

L= Input Line or Hot
N= Neutral

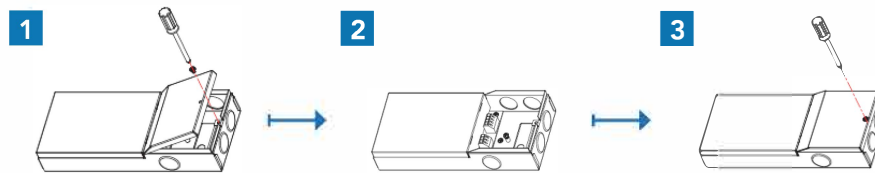
In the case of 208 or 240 line voltage, the 2nd hot leg will be connected to the white lead coming from the fixture.

TO WIRE THE DRIVER

Open the cover of the junction box with a screwdriver.

Remove the round knockout and connect conduit to wiring box with proper connectors. Press the binding post with a straight screwdriver, insert the wire, then secure the connection. For AC input, connect the neutral wire (White) to AC-N, the live wire (Black) to AC-L and the ground wire (Green) to the grounding screw. For 0-10V dimmer wiring, connect the dimmer+ wire to the DIM+ and connect the dimmer- wire to the DIM-.

When wiring is complete, replace the junction box cover and tighten the screw.



TO INSTALL INTO T-BAR CEILING

Remove the existing ceiling tile (or fixture you are replacing).

Connect the power supply (refer to the Wiring Diagram).

Insert the panel light into the T-bar grid (T-bar grid must adequately support the weight of the fixture).

Bend out the attached T-bar clips and use the holes provided to support the fixture using the means required by local or national safety code. (The attached T-bar clips are for positioning purposes only).

Installation is now complete.

