

LED FIXTURE

DL Series



LED Vapor Tight DL-VT4X (NEMA 4X)

Linear, IP66 NEMA 4X rated Luminaire



Features & Benefits

CUL listed	IP 66 rated NEMA 4X, NSF certified
High impact composite grey housing, IK08	120-347V Auto-Sensing Driver
High impact diffuser 5VA IK08, frosted lens	130 lm/W
Stainless steel clips included	0-10V Dimming
Stainless steel mounting brackets included	Optional microwave motion sensor, emergency battery
c/w PG13.5 threaded cable gland	L70 @ 50,000 HRS

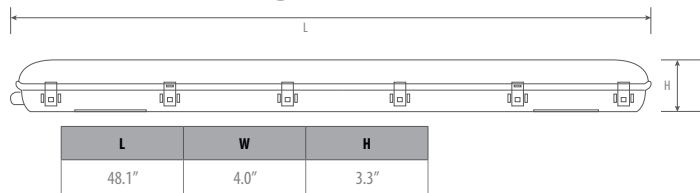
Warranty

5-year limited warranty in commercial use from the date of purchase
Operating temperature range between -40°C and +55°C

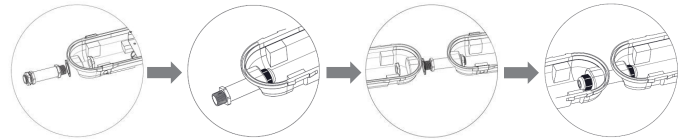
Applications

Indoor or outdoor, suitable for waterproof, dustproof and moistureproof needs*.
*Special environment use, please contact your sales representative

Dimensional drawing



Connector Installation



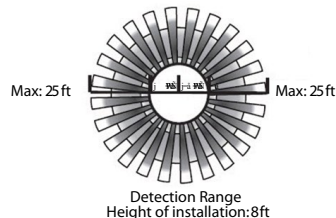
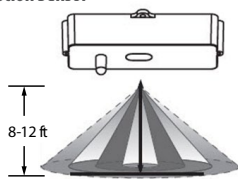
Wiring Connector: DL-VT4X/TWC

Product Specification

Ordering Code	Model Number	Description	Watts (W)	Voltage (V)	Hour Rating	Beam Angle	Lumens (lm)	CCT (K)	CRI	Options	Case QTY.
3665300	DL-VT4X/4F/40W/40/120-347V/D	Vapor Tight 4ft 40W 4000K 120-347V Auto-Sensing Driver 0-10V Dim	40W	120-347V	50,000	120°	5,300	4000	>80	Sensor, Emergency Battery	4
3665301	DL-VT4X/4F/40W/50/120-347V/D	Vapor Tight 4ft 40W 5000K 120-347V Auto-Sensing Driver 0-10V Dim	40W	120-347V	50,000	120°	5,300	5000	>80	Sensor, Emergency Battery	4
3664301	DL-VT4X/2F/24W/40/120-347V/D	Vapor Tight 2ft 24W 4000K 120-347V Auto-Sensing Driver 0-10V Dim	24W	120-347V	50,000	120°	3,100	4000	>80	Sensor, Emergency Battery	4
3664302	DL-VT4X/2F/24W/50/120-347V/D	Vapor Tight 2ft 24W 5000K 120-347V Auto-Sensing Driver 0-10V Dim	24W	120-347V	50,000	120°	3,100	5000	>80	Sensor, Emergency Battery	4
3660110	DL-VT4X/Remote	Hand Held Remote									
	DL-VT4X/TWC	Tandem Wiring Connector									
	S	Microwave Motion Sensor									

Options Information

Motion Sensor



Default Settings:

Motion: 100% lumen output
≥5min with no motion: 30% lumen output
≥60min with no motion: OFF

Vapor Tight Remote DL-VT4X/Remote



Maximum Operating Range: 33 feet

The following settings can be customized:
-Sensitivity for motion detection
-Hold Time
-Standby level 0/ 10/20/30 percent
-Standby time 24H/ 1M/ 30M/ 60M
-Level where the daylight sensor turn off the fixture

Default Settings:

Sensitivity 100%, Standby time 5min, Dimming level 30%
Dimming time 60min