

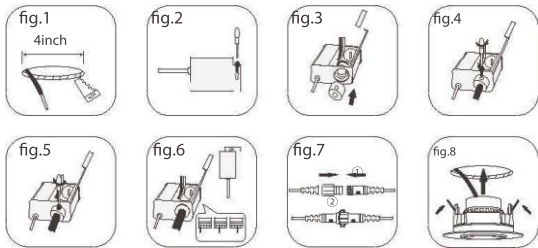
**CONSTRUCTION:**

Round 4" fixtures with COB LEDs. Isolated Class 2 external driver factory installed inside junction-box. One driver for every fixture required. Power Factor>0.90 LED fixture and driver are TYPE IC rated-approved for direct contact with insulation. Pot light housing is NOT required even for insulated ceilings.

Driver	Model	3Way CCT Adjustable 4"Round Eyeball Downlight
	Input	120VAC 60Hz
	Output	42V 280MA Max
	Lamp Life	50000 Hours
	Approved Location	Damp
	Operating Temperature	-20°C -50°C
Light	Energy used	12W
	Luminous Flux	110 OLM
	Equivalent to	75 W halogen
	CCT	3000K/4000K/5000K
	Beam Angle	38Degree
	CRI	Ra>80
	Dimming Range	5%~100%
Mounting	OD	4.72" (120MM)
	Thickness	1.73" (44MM)
	Cut out	3.93" (100MM)

Dimmer Compatibility List		
for LED Recessed Lights		Dimmable down to 10%
BRAND	MODEL	3Way CCT Adjustable 4" Round Eyeball Downlight
Lutron	MS-OP52	1-10
Lutron	MACL-153M	1-10
Lutron	PD-6WCL	1-10
Lutron	S-600P-WH	1-10
Lutron	CTCL-153P-WH	1-10
Leviton	TTI06-1 NG	1-10
Lutron	MRF2-6ND-120-WH	1-10
Leviton	1D4402	1-10
Leviton	1C2505	1-10
Lutron	SCL-153P	1-10
Lutron	SCL-153PH	1-10
Lutron	LGCL-153P	1-10
Lutron	LGL-153PLH	1-10
Leviton	NO.6641	1-10
Leviton	NO.6161	1-10
Leviton	NO.6631	1-10
Leviton	NO.6681	1-10
Lutron	MACL-153MH-WH	1-10
Leviton	NO.6633	1-10
Lutron	DVW-603PGH-WH-C	1-10

**INSTALLATION:**



1. Cut off power before installation. Drill a hole on the ceiling(fig.1).
2. Install the junction box(fig.2)(fig.3)(fig.4)(fig.5), and connect the lamp driver(fig.6).
3. Connect the lamp connectors and locked it(fig.7) with the DC end of the driver.
4. Fasten the clip to the ceiling(fig.8).
5. Turn on the power to make sure the panel light is well installed.

**FEATURES :**

- IC Rated fixture, easy installation
- High quality die-casting aluminum heatsink, good heat dissipation
- Isolated constant current driver, works stable
- Instant on with no warm up time
- 360° rotation and 45° tilt, 38° beam angle
- Free of harmful mercury, environment friendly
- RoHS compliant
- CONFORMS TO UL STD.1993
- CERTIFIED TO CSA STD.C22.2 NO.1993

This limited warranty is subject to the following additional conditions.

- 1.The products have been installed and operated in accordance with the manufacturer instructions.
- 2.Products have not been subject to accident, neglect, abuse, misuse, lighting, electrical surges or acts of God.
- 3.The product has been purchased directly from an authorized LED Lights distributor.
- 4.Purchase receipt or invoice is available for inspection by LED Lights.
- 5.This warranty is limited to products purchased for use in regions that are with in the juris diction of Canada and USA.

**CAUTION :**

- 1.This product must be installed in accordance with the applicable installation code by a person familiar with construction and operation of the product and the hazards involved.
- 2.Make sure the product is undamaged before using.
- 3.Do not use other drivers.
- 4.Keep far away from the children.
- 5.Turn off the power before cleaning the lamps don't touch any chemical or corrosive material to clean.