



#### TRIM OPTIONS

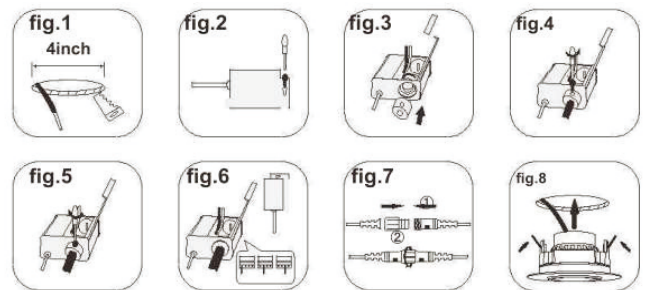


#### Features

- Beside white finish, Black and Satin Nickel finish also available
- IC Rated fixture, easy installation, no CAN housing require
- High quality die-casting aluminum heatsink, good heat dissipation
- Isolated constant current driver, works stable
- Instant-on with no warm up time
- 360° rotation and 45° tilt, 38° beam angle

Lamp Specification	
Product:	4 Inch Eyeball LED Downlight
Power:	12W
Input Voltage:	AC110/120V (60Hz)
Power Factor:	>0.90
LED Type:	1PC COB
Color Temperature:	3000K / 4000K / 5000K
CRI:	>80
Lumen Flux:	1100 - 1200 LM
Beam angle:	38 Degree
Dimmable:	Yes
Lifespan:	50,000H
Working Temperature:	-20~50 °C
Driver Box Size:	L*W*D 3.66*2.36*1.25 in (93*60*32 mm)
Material:	Aluminum + LENS
Light Size:	D*H 4.72*1.73 in (120*44 mm)
Certification:	cETL

#### Installation Instruction



1. Cut off power before installation. Drill a hole on the ceiling (fig.1).
2. Install the junction box (fig.2)(fig.3)(fig.4)(fig.5), and connect the lamp driver (fig.6).
3. Connect the lamp connectors and locked it (fig.7) with the DC end of the driver.
4. Fasten the clip to the ceiling (fig.8).
5. Turn on the power to make sure the panel light is well installed.

